

# RASPLUS QUICK REFERENCE GUIDE

## INSTALLATION AND OPERATION (1)

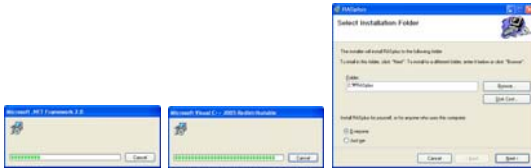
### SYSTEM REQUIREMENTS

- **Operating System:** Microsoft® Windows® XP x86 (32 Bit) (Service Pack 3), Microsoft® Windows® Vista x86 (32 Bit) (Service Pack 1), Microsoft® Windows® 7 or Microsoft® Windows® 8
- **CPU:** Intel Pentium IV (Celeron) 2.4GHz or faster
- **RAM:** 512MB or higher
- **VGA:** AGP, Video RAM 8MB or higher (1024x768, 24bpp or higher)

### SOFTWARE INSTALLATION

Close all running programs, and insert the installation CD. Run the setup.exe file.

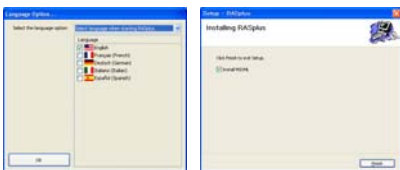
1. The .NET Framework and the Visual C++ Runtime Libraries are installed automatically.
2. Designate the folder path to install RASplus and select the user(s) who can use RASplus then click Next.



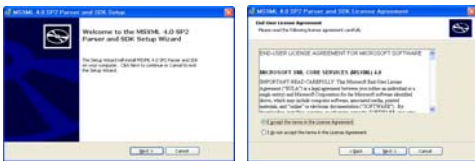
3. When the following dialog box appears, click Next. → Click Next. → Select whether or not to run RASplus automatically when logging onto Windows and then click Next.



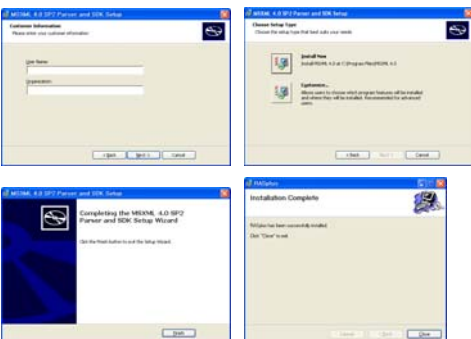
4. Set the language option by selecting either Select language when starting RASplus or Always start RASplus using the language below. If you select Always start RASplus using the language below, select the desired startup language from the list of available languages and then click OK.
5. When the following dialog box appears after finishing the RASplus installation, select MSXML application and click Finish. Installing the MSXML is required for RASplus to initiate.



6. Click Next. → Select I accept the terms in the License Agreement, and click Next.



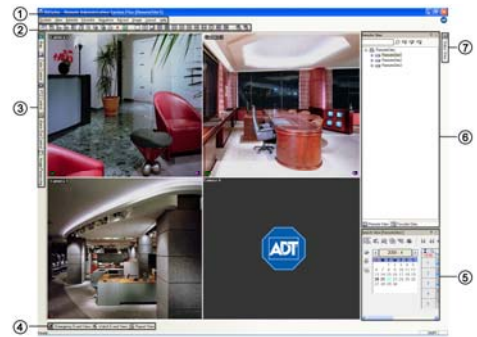
7. Enter User Name and Organization, and click Next. → Select Install Now and install MSXML following the instructions. → Click Close to complete the installation.



### START RASPLUS PROGRAM



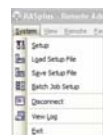
- Double click the RASplus icon displayed on the desktop.
- The RASplus program consists of the screen, 12 docking panels, menu and toolbar.



### Panel, Menu & Toolbar

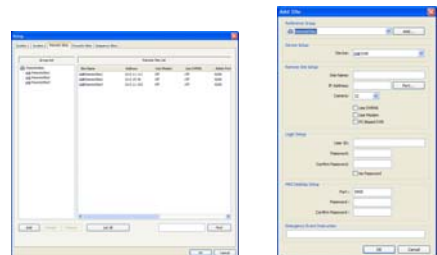
- 1 **Menu**
  - See the Menu section for details.
- 2 **Toolbar**
  - The Toolbar allows convenient access to desired functions.
- 3 **Map/Color/PTZ/Alarm Out/Image Processing Panel**
  - The Map panel allows efficient monitoring of the remote sites by displaying a three-dimensional map of the selectable site.
  - The Color/PTZ/Alarm Out Control panels allow color control, PTZ control and alarm out control while live monitoring a remote site.
  - The Image Processing panel allows enhancing played back images.
- 4 **Emergency Event View/Watch Event View/Report View Panel**
  - The Emergency Event View panel displays a list of events that were called from individual remote sites.
  - The Watch Event View panel displays events detected at individual remote sites while RASplus is in the live monitoring mode.
  - The Report View panel displays the system status information of remote sites.
- 5 **Search View Panel**
  - The Search View panel allows time-lapse or event searching of recorded data on the remote DVR.
- 6 **Remote Sites/Favorite Sites Panel**
  - The Remote Sites/Favorite Sites Panel displays a list of remote sites/favorite sites registered during RASplus System setup. Selecting the remote site/favorite site you want to connect to from the list and then dragging & dropping it in the desired position on the screen connects the site automatically.
- 7 **Status View Panel**
  - The Status View panel displays the event, alarm out, system check, object detection, video blind detection and recording status information of the connected remote site in real-time. To connect to the remote site, select the site or camera you want to connect to from the Remote Site or Map panel and then drag and drop it in the Status View panel.

### Remote Site Registration



Select "Setup" from the System drop-down menu to initiate programming for the system operation and remote site configuration.


Move to the Remote Sites tab to configure the connection list for remote access. Click the Add button and enter the information of the remote site.

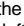
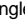
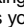
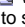


# RASPLUS QUICK REFERENCE GUIDE

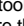
## INSTALLATION AND OPERATION (2)


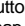
### Live Monitoring

**Remote Site Connections:** To connect a remote site on the Watch screen, select the site or camera you want to connect to in the Remote Site or Favorite Sites panel and then drag and drop it in the desired position on the screen. Click the  button on the toolbar or select Disconnect from the System drop-down menu to disconnect the current connection manually.

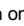
**Screen Layout and Frame Layout:** RASplus provides multiple screen layout options. When in one of the multi-view formats, clicking the  or  button will move to the previous or next page. To view a specific image in the single-screen mode, move the cursor to that image and double click the left mouse button. To return to the previous screen mode from the single-screen mode, double click the left mouse button in the monitoring window. Clicking  will apply the selected frame layout to RASplus, and clicking  allows you to set up the user-defined frame layout.



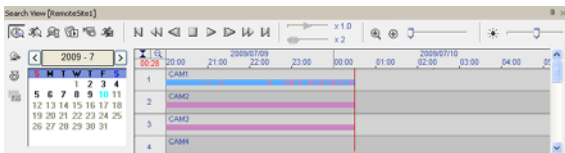
**Sequence Monitoring:** Clicking the  button on the toolbar connects to the registered sites sequentially allowing connection to more than one remote site and displays images from selected cameras.

**Save & Print:** Clicking the  button on the toolbar saves the image currently displayed on the screen as a bitmap or JPEG file. Clicking the  button on the toolbar prints the image currently displayed on the screen on a printer connected to your computer.

### Playback & Search


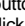
**Remote Site Connections:** To connect a remote site on the Search screen, select the site or camera you want to connect to in the Remote Site or Favorite Sites panel and then drag and drop it in the desired position on the screen. Click the  button on the toolbar or select Disconnect from the System drop-down menu to disconnect the current connection manually.

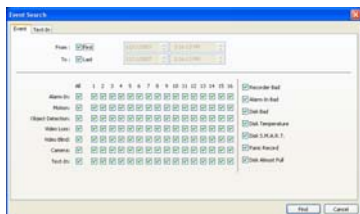
**Search View Panel:** The Search View panel consists of playback and search controls, time-lapse search table, and event search table.



**Search Mode:** RASplus supports two search modes: time-lapse mode and event mode. The time-lapse search mode searches for recorded data by time and then plays back images found within the time parameters. The event search mode searches for event log entries using specific conditions and plays back the images associated with those event entries.



– Event Search: Click the  button on the Search View panel to enter the event search mode. First, click the  button, and set up the search condition in the following Event Search dialog box.





**Save:** Clicking the  button on the Search View panel saves recorded video.



- Save As Self-Player: Saves any video clip of recorded data as an executable file.
- Save As Video: Saves any video clip of recorded data in an AVI (Audio Video Interleaved) file format.

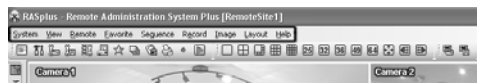
### Panic Recording

Clicking the  button on the toolbar starts panic recording of cameras currently displayed on the Watch screen. Up to 16 channels can be recorded at a time, and you can select which cameras are to be recorded during the System setup. Clicking the button again stops panic recording. Panic recording will be available only if you select Use Recording and it is set up in the recording options during the System setup.

Clicking the  button on the toolbar initiates the Record Player program and plays video saved in the recording folder designated during the System setup.

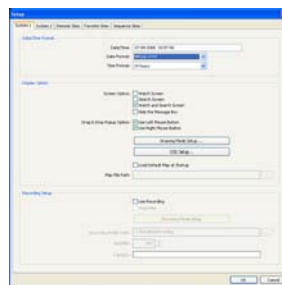


### Menu



#### System

- Setup: Allows setting up the system operation and remote site configuration.



\* Refer to User's Manual for details.

- Batch Job Setup: Upgrades or sets up multiple sites.
- Disconnect: Disconnects all current connections.
- Log: Displays the system log and batch job log information of RASplus, and the log information of emergency events called in from remote sites.
- Exit: Disconnects all current connections and exits RASplus program.

**View:** Displays or closes the toolbar and panels.

**Remote:** Changes the setup of a remote DVR and display the system log and event log information of a remote DVR.

**Favorite:** Saves the current screen layout directly to the Favorite site.

**Sequence:** Starts or ends auto sequencing.

**Record:** Starts or ends panic recording. Selecting Record Play initiates the RecordPlayer program and plays recorded video.

**Image:** Allows the user to enhance images that are played back and to save the current image as a bitmap or JPEG file, and Prints the current image.

**Layout:** Selects the desired screen layout using the layout toolbar, apply the desired frame layout to RASplus, and set up the user-defined frame layout.

**Help:** Displays RASplus version information.