



TRUE Day/Night, Digital-WDR, 700TVL Full Body Camera with Vari-focal Lens

KEY FEATURES AND BENEFITS

- | | |
|---|---|
| <ul style="list-style-type: none"> • High performance 1/3" Sony EXview HAD CCD II Technology • Excellent video quality with 700TVL resolution (750TVL, B/W) • 2.8-12mm A/I Varifocal lens • TRUE Day/Night (TDN) operation with programmable settings • On Screen Display (OSD) with Tactile programming switch • Digital Wide Dynamic Range (D-WDR) , Mirror and Sharpness Functions | <ul style="list-style-type: none"> • 2D Digital Noise Reduction (2D-DNR) • Back Light compensation (BLC) and High Light Compensation (HLC) • Privacy Masking (4 position) and Video Motion Detection (4 areas) • Includes wall/ceiling mount • 12VDC/24VAC |
|---|---|

ORDERING INFORMATION

| SCN# | Item |
|----------|---|
| A-CC700T | Full body camera, 700TVL, TDN, D-WDR, 2.8-12mm AI, 12/24V |



Business Solutions

TRUE Day/Night, Digital-WDR, 700TVL Full Body Camera with Vari-focal Lens

Product Specifications

Video

| | |
|----------------------|----------------------------------|
| CCD Image Sensor | 1/3" SONY EXview HAD CCD II |
| Total Pixels | 1020 (H) x 508(V) |
| Scanning System | 2:1 Interlace |
| Scanning Frequency | 15.734KHz (H), 59.94Hz (V) |
| Sync. System | Internal |
| Electronic Shutter | 1/60 ~ 1/10,000 |
| Resolution | 700TVL color; 750TVL B/W |
| Minimum Illumination | 0.15 lux (color), 0.01 lux (B/W) |
| Video Output | 1.0Vp-p (75-ohm, composite) |
| S/N Ratio | > 50dB (AGC off) |
| OSD Camera Control | Tactile Switch |

Functions

| | |
|------------------------------------|---|
| D-WDR (Adaptive Tone Reproduction) | LUMINANCE(L/M/H), CONTRAST(L/LM/M/MH/H) |
| Backlight | OFF / BLC / HLC |
| Day & Night | AUTO |
| MD (Motion Detection) | On (4 areas) / Off Adjustable Size & Sensitivity |
| PM (Privacy Masking) | 0 ~ 4 zone |
| WB (White Balance) | ATW / PUSH / USER1 / USER2 / ANTI CR / MANUAL / PUSH LOCK |
| AGC (Auto Gain Control) | On / Off |
| Exposure | Auto Iris / Auto Iris + Electronic Shutter |
| Brightness | 0 ~ 255 steps |
| Contrast | 0 ~ 255 steps |
| Sharpness | 0 ~ 255 steps |
| HUE | 0 ~ 255 steps |
| Gain | 0 ~ 255 steps |
| 2D-DNR (Digital Noise Reduction) | OFF / Y / C / Y, C |
| Mirror | ON / OFF |

Connectors / Mechanical

| | |
|------------------------|--|
| Power Input | 2-pin Terminal Block |
| Composite Video Output | BNC |
| Lens Mount | C/CS |
| Lens | 2.8-12mm, F1.2 Varifocal, DC Auto Iris |

Environmental

| | |
|-----------------------|-----------------------------|
| Operating Temperature | 14°F ~ 122°F (-10°C ~ 50°C) |
| Operating Humidity | 0~96% (non-condensing) |

General

| | |
|------------------------|--|
| Dimensions (W x H x D) | 2.6 x 2.2 x 4.7in (66 x 63 x 120mm) (without lens) |
| Weight | 0.53lbs (0.24kg) |

Power

| | |
|---------|-------------|
| Voltage | 12VDC/24VAC |
| Power | 3.5W |

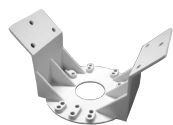
Approvals

UL, FCC, CE, RoHS

Specifications are subject to change without notice.

Optional Accessories

| | |
|------------|------------------------------|
| A-CM150 | Corner mount for EHWMMHB |
| A-CM151 | Pole mount for EHWMMHB |
| EHWMMHB | Environmental Camera Housing |
| SCV55014DC | 5 - 50mm VF, DC AI Lens |



A-CM150



A-CM151

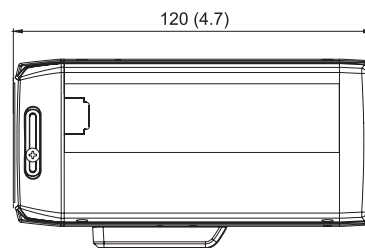


EHWMMHB

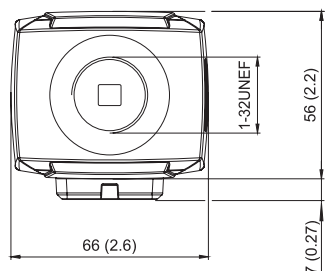


SCV55014DC

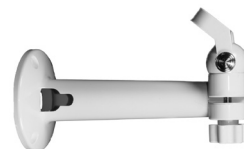
Dimensions



SIDE VIEW



FRONT VIEW



Wall/Ceiling Mount Included

For more information visit www.ADT-Matrix.com

© 2013 ADT—All Rights Reserved. ADT Security Services Inc. ADT, the ADT logo and ADT Always There are registered trademarks of ADT Services AG and are used under license.

