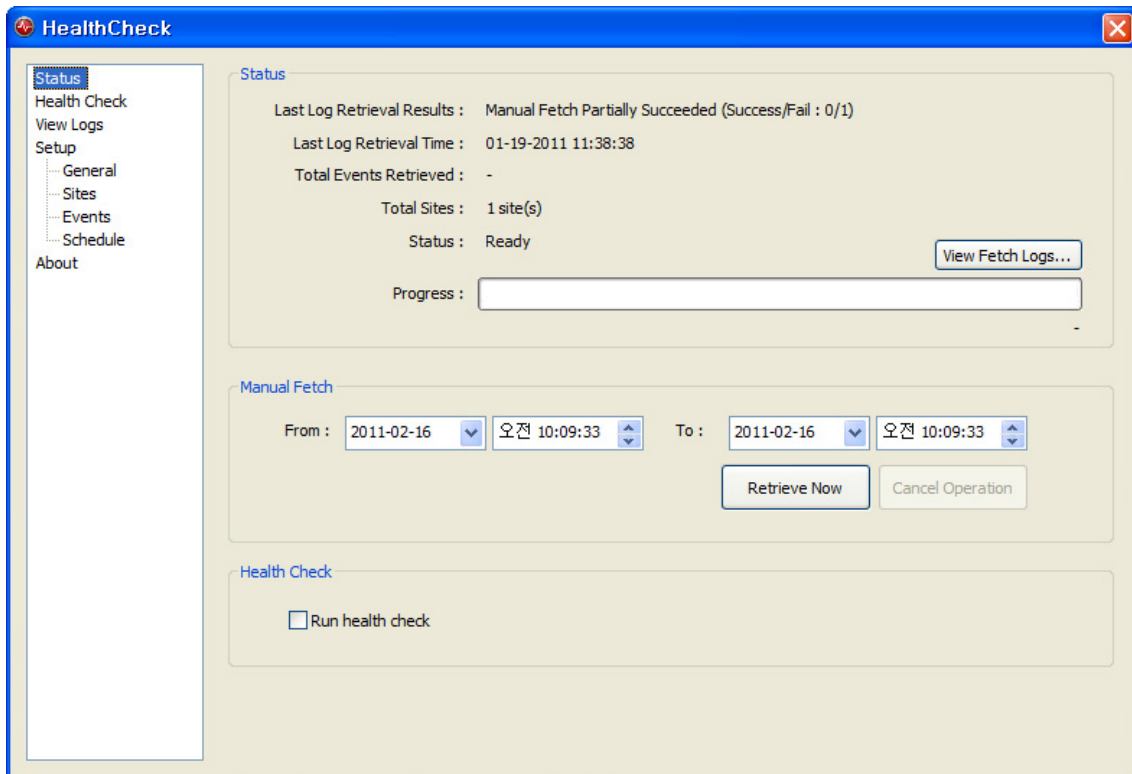


## HealthCheck for ADT

HealthCheck fetches system logs and events logs from registered remote sites manually or on schedule, and shows current health status of remote devices. HealthCheck saves fetched logs to sqlite databases and export these logs to CSV (Comma Separated Value) files. Contents of databases can be viewed and contents be shown which meet given condition.

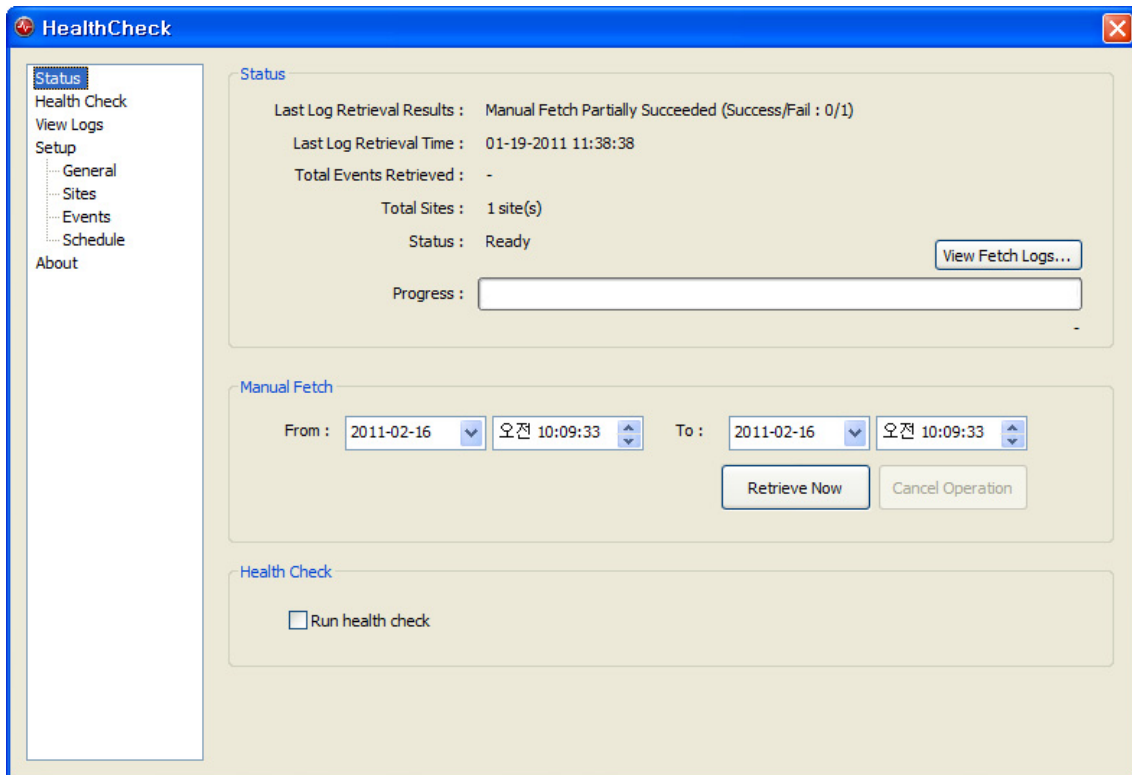
Sites to fetch logs can be registered from RASplus configuration file (usually RASplus\_Setup.xml) or can be registered manually by user.



There are several menu items in this application.

- Status
- Health Check
- View Logs
- General (under Setup)
- Sites (under Setup)
- Events (under Setup)
- Schedule (under Setup)
- About

## Status



In status page, user can see following information and fulfill some operation :

- Shows last log fetch result.
- Shows last log fetch time.
- Shows last log fetch count.
- Shows number of registered sites.
- Shows application status.
- Shows fetch progress.
- Shows application (not remote device) log. By clicking 'View Fetch Logs...' button in this page, user can see application log and see which operation is failed.
- Shows fetch progress.
- Fetch logs from remote sites manually. User can limit time period.
- User can cancel ongoing operations (scheduled fetch / manual fetch). HealthCheck can fetch logs from up to 5 remote sites concurrently.

※ User cannot control HealthCheck during fetch operation is in progress.

## Health Check



In Health Check page user can monitor current status of remote devices. Status of remote device contains following information :

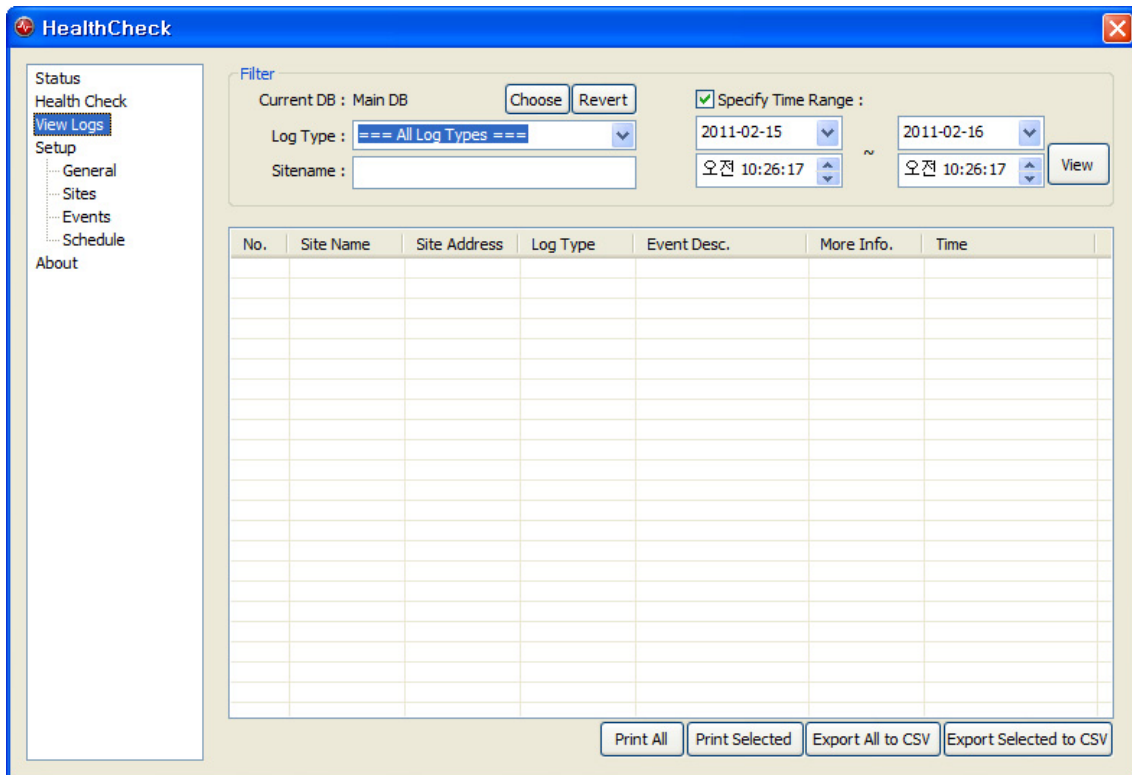
- A-In : Alarm In Status
- Mo : Motion Detection Status
- VLoss : Video Loss Status
- VBlind : Video Blind Status

A status must be one of (On, Off, x).

- On : Event triggered (text displayed in red)
- Off : Event not triggered
- X : Event not configured

Status information refreshed to that of another remote device for every two seconds. Configuration of remote device can be done by using RASplus. (See manual of RASplus and DVRs for details.)

## View Logs



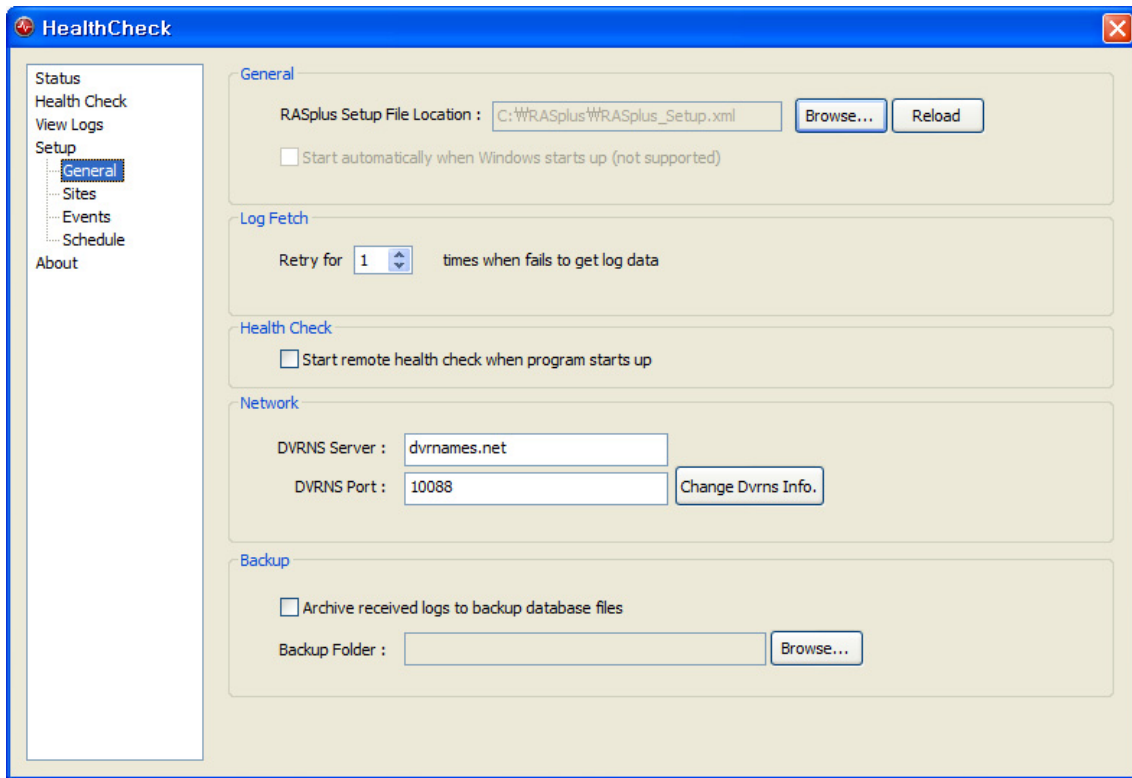
In View Logs page, saved logs can be loaded from database and displayed. User can load logs conditionally by following filter :

- Log Type
- Site Name
- Time Range (optional)

Basically, HealthCheck saves fetched logs to main database file, but can save logs to alternative database file. (See General page for details.) When user wants to see logs from another database file, user should switch database by clicking 'Choose' button and select the database file. For convenience, user can switch to main database by clicking 'Revert' button.

When user clicks 'View' button, logs are filled in list view control. User can select each log record by clicking row and also select multiple logs by clicking rows with control key or shift key pressed. Loaded logs can be exported to CSV file by clicking 'Export all to CSV' button or 'Export selected to CSV' button.

## General (under setup)



In General page, user can configure general settings of HealthCheck.

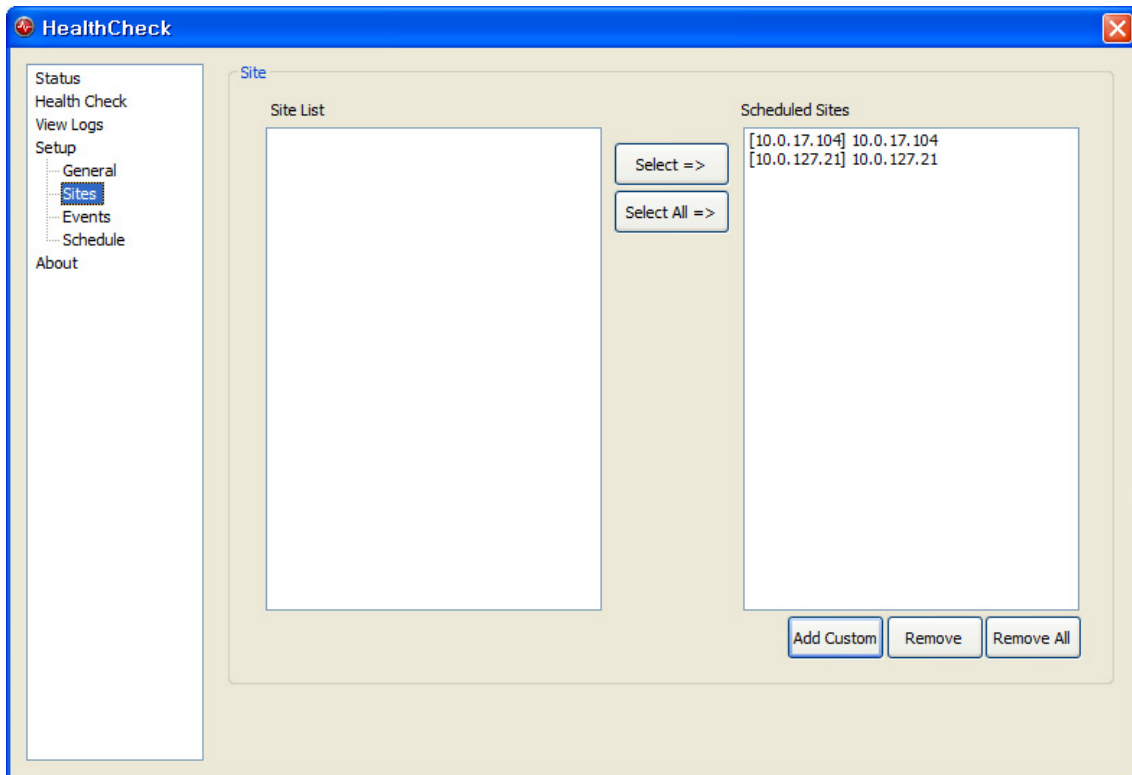
User can choose RASplus setup file to load remote sites. By clicking 'Browse...' and select RASplus setup file in file selection dialog. If user selects RASplus setup file remote site list is loaded automatically. User also can reload site information by clicking 'Reload' button from current RASplus setup file because this file can be changed by RASplus. When remote site list is loaded user should select sites to fetch logs from which site. (See Site page for details).

User can specify retry count for failed fetch operations due to some problem like 'all connection channels are being used', 'invalid id/password' or something like that. If this value is set to 0, [Application Name] does not retry for failed operations.

Some remote sites are using DVRNS (DVR Name Service) connection, connection information of DVRNS is required. By clicking 'Change Dvrns Info.' button, user can change DVRNS connection information.

When HealthCheck fetch logs from remote sites, fetched logs can be saved to backup database files. If user checks 'Archive received logs to backup database files' button, fetched logs are archived to backup database files in selected backup folder. User can change this folder location of backup database files.

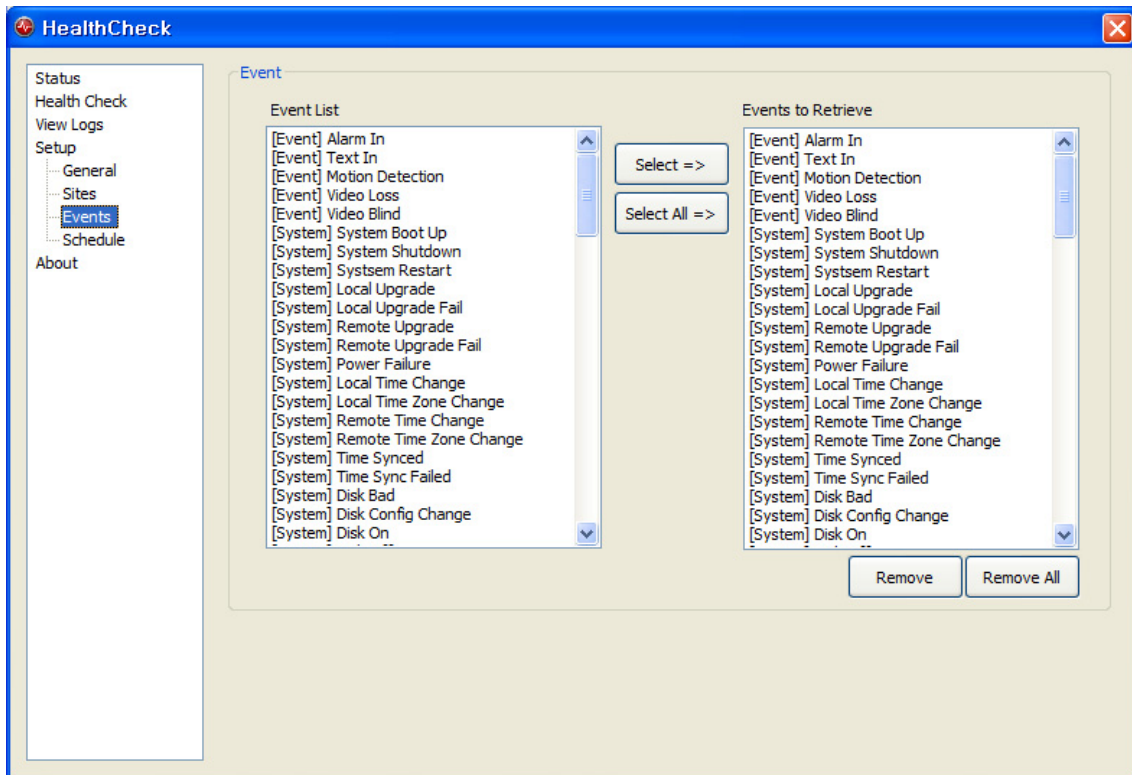
## Sites



In Sites page, user can select remote site to fetch logs from. Remote sites in left list box are registered remote site in RASplus. User can select remote sites to fetch logs from by clicking 'Select =>' button or 'Select All =>' button. When user clicks these buttons, selected remote sites are registered in right list box. User also can remove sites by click 'Remove' or 'Remove All' button. If user removed some sites there is no effect on RASplus since HealthCheck does not modify RASplus setup file, just reads remote site information from it.

User also can add remote site that is not registered in RASplus by clicking 'Add Custom'. As mentioned above, new sites do not added to RASplus.

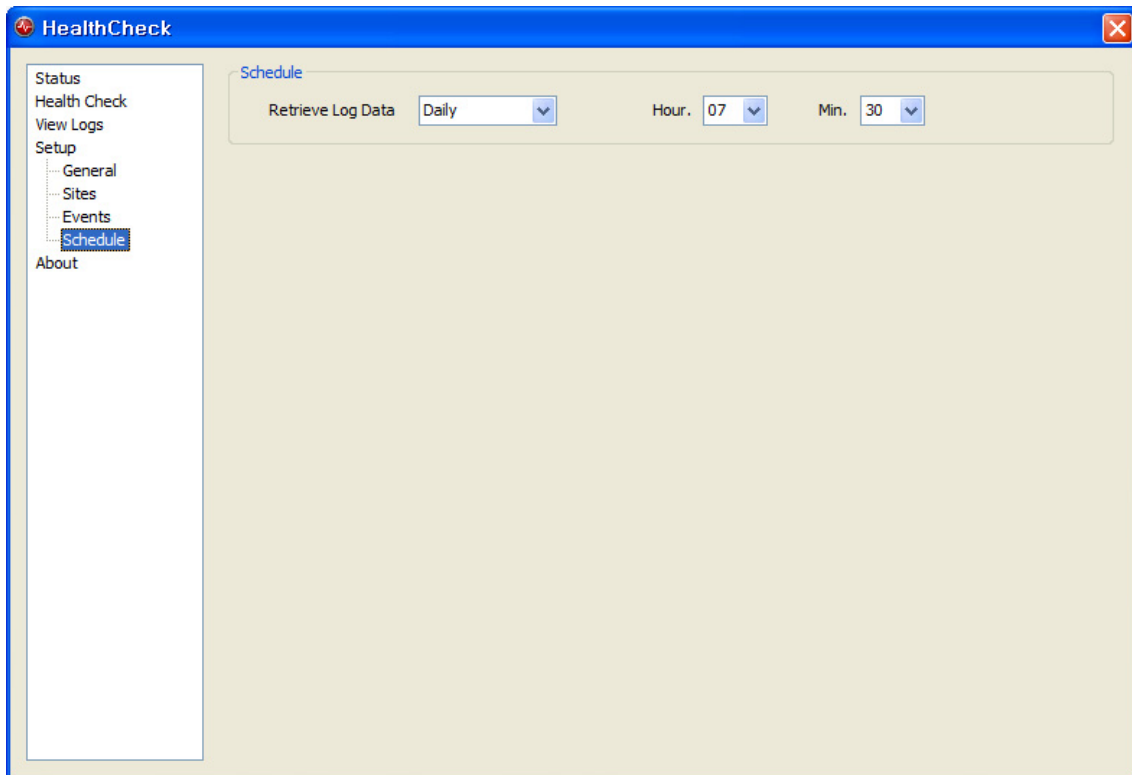
## Events



In events page, user can select which log to save. All system log types and event log types are listed in left list box. User can Select/Remote certain log types by clicking buttons in this page.

If user selects no log type, fetch logs are never saved to database files.

## Schedule page



In schedule page, user can schedule information. HealthCheck fetch logs daily or hourly on certain time.



# About

