

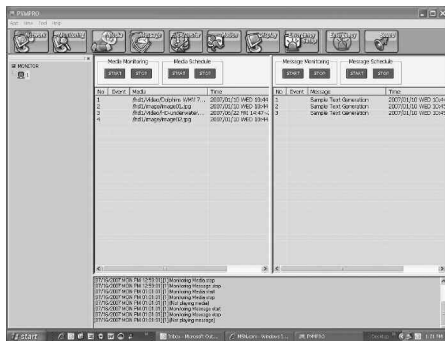
PVMPro Series Network LCD Public View Monitors with WDR Camera & EMB



Product Summary

The Network Monitor (NM) PVM Pro series feature a high brightness and contrast 20.1" and 32" TFT-LCD monitor designed specifically for retail video security and advertising. The Pro monitor series supports connection to IP supported networks enabling a central operator to control advertising to the monitor using video/audio files, still imagery (such as JPEG files) and even scrolling banner text for up to 16 PVMs within a LAN or WAN environment. IP addressing allows each monitor to be controlled individually with its unique message.

Client software allows programming of individual settings and uploading of the type of advertising message sent to the monitor. Various advertising methods can be scheduled to occur throughout the day for maximum exposure of up to 40 different messages or product advertising. The monitor contains a hard-disk drive (HDD) for storage of the video, audio, image and text files.



The programming capabilities include an Emergency Message Broadcast (EMB) permitting an emergency audio, video and text message to be played by all networked monitors simultaneously.

The monitors include one high resolution Wide Dynamic Range (WDR), color camera with an integrated 2.8-11mm vari-focal,

auto-iris lens. The camera video is displayed on the monitor in one of several screen formats including two programmable picture-in-picture (PIP) modes.

Programmable Video-Motion-Detection (VMD) is provided for the two video inputs (internal camera or external source) and allow the camera or source video to be displayed in user defined screen formats on the monitor when motion is detected within the camera's field-of-view. The two video inputs are looped-out for use as security system inputs to a DVR.

The 32" monitor supports multiple video/audio source inputs, including 2-composite (internal camera or external source), S-VHS, Component, PC-analog (RGB), PC-digital (DVI), and 2-stereo audio inputs.

The 20.1" monitor supports multiple video/audio source inputs, including 2-composite (internal camera or external source), S-VHS, and 2-stereo audio inputs.

The Pro monitor series allows for USB multi-media insertion and an infrared (IR) remote control is included for monitor programming in non network applications.

The monitors employ an ambient light sensor and a 'power-savings mode' allowing the monitor LCD back-light to turn off when ambient lighting is reduced.

Two powerful 5 watt stereo amplifiers provide full-sound to the two front-mounted speakers for optimum audio coverage.

The 32" monitor requires a universal power input from 100VAC ~ 230VAC (50/60Hz) MAINS supply. The 20.1" monitor requires 12VDC from a supplied 120VAC / 12VDC transformer.

Features

- Text Generation (scrolling banner) and Audio / Video Commercial Advertising
- Client Software for Multiple PVM Programming
- Network wide Emergency Message Broadcast (EMB)
- Program by Monitor, Advertising, or Time
- File (Images/Audio/Video Advertising, Text messages) Transfer using:
 - IP Addressable Network (LAN)
 - 2 USB Ports
- Ultra-Bright TFT-LCD with Excellent Color Reproduction
- WDR color camera with 2.8-11mm Vari-Focal, Auto iris Lens
- Built-In Motion Detection
- Built-In Light Sensor for Sleep Mode Operation
- Multiple Viewing Formats with scalable PIP, PBP Display
- On-Screen Menu
- Front Facing Speakers with Built-In 5W Stereo Audio Amplifiers
- External stereo audio inputs
- Stereo audio output (line level – 1/4" Jack)
- 12VDC Output for External Camera
- Video Output Connectors (3) (2) looping video input & (1) Internal-camera output
- Long-Life Backlight
- Rugged Metal Case
- Includes IR Remote Control
- Time / Sync Capability to client computer

Ordering Guide

SCN#	Item
NM321W-WDR	32" PVM Pro Network LCD monitor, 16x9 aspect ratio, one high resolution WDR color camera, IP addressable
NM201A-WDR	20.1" PVM Pro Network LCD monitor, 4x3 aspect ratio, one high resolution WDR color camera, IP addressable



ADT Always There®

Specifications

Monitor

NM321W-WDR 32" PVM Pro Series Network LCD Public View Monitor with WDR camera & EMB

NM201A-WDR 20.1" PVM Pro Series Network LCD Public View Monitor with WDR camera & EMB

LCD

	NM321W-WDR	NM201A-WDR
Pixel Format	1366 x 768 x RGB	1600 x 1200 x RGB
Brightness (Typical)	500 cd/m ²	300 cd/m ²
Contrast Ratio (Typical)	1200 : 1	800 : 1
Viewing Angle H/V	178 / 178	178 / 178
Color Depth	8bit / 16.7M Colors	8bit / 16.7M Colors
Light Source / Lifetime	16 CCFLs / 50,000 Hrs	6 CCFLs / 45,000 Hrs
Response Time	8 ms	8 ms

Video

	NM321W-WDR	NM201A-WDR
Composite		
System	NTSC / PAL	NTSC / PAL
Level	1.0Vp-p @ 75 ohm	1.0Vp-p @ 75 ohm
Connector	Internal Camera x 1 or 2 External Camera x 1 or 2	Internal Camera x 1 or 2 External Camera x 1 or 2
Output	Internal Camera x 1 or 2 External Camera x 1 or 2	Internal Camera x 1 or 2 External Camera x 1 or 2
Connector	BNC	BNC
S-Video		
System	NTSC / PAL	NTSC / PAL
Level	1Vp-p (L), 0.3 (C) Vp-p @ 75ohm	1Vp-p (L), 0.3 (C) Vp-p @ 75ohm
Connector	4pin Mini-DIN X 1	4pin Mini-DIN X 1
Component		
Mode	1080i, 720p, 480p, 480i	
Signal	YPbPr (SOY)	
Level	1Vp-p (y), 0.3Vp-p (Pb & Pr) @ 75ohm	
Connector	3-terminal RCA x 1	
PC (Analog)		
Mode	1366 x 768 @ 75Hz Max	
Signal	Analog RGB & H/V Sync	
Level	0.715Vp-p (RGB) & TTL (Sync)	
Connector	15 Pin D-SUB	
Plug & Play	DDC 2B	
PC (DVI)		
Mode	1366 x 768 @ 75Hz Max	
Connector	DVI-I	
Plug & Play	DDC 2B	
Audio		
Level	Line Level	Line Level
Input	2-Terminal RCA x 2	2-Terminal RCA x 1
Output	Phone Jack x 1	Phone Jack x 1
Amplifier	5W x 2	5W x 2
Storage	80GB x 1	80GB x 1

Peripheral Interface

Ethernet	RJ45 x 1	RJ45 x 1
USB 2.0 Host	x 1	x 1
USB 2.0 Device	x 1	x 1
Playback		
Video Decoding	MPEG-1, MPEG-2 MP@HL MPEG-4.2, ASP@L5 (720p), WMV9 JPEG	MPEG-1, MPEG-2 MP@HL MPEG-4.2, ASP@L5 (720p), WMV9 JPEG
Audio Decoding	MPEG-1 Layers I, II and III MPEG-4 Low Complexity AAC	MPEG-1 Layers I, II and III MPEG-4 Low Complexity AAC

Camera (Internal)

No. of Camera	1-WDR	1-WDR
Resolution	1/3"	1/3"
Resolution	480 TVL	540 TVL
Sensitivity	0.004 Lux (F2.0, 50IRE)	0.004 Lux (F2.0, 50IRE)
S/N Ratio	50dB	50dB
Auto Iris	Yes	Yes
AWB	Yes	Yes
Electronic Shutter	1/60 ~ 1/100,000	1/60 ~ 1/100,000
VF Lens	2.8 – 11 mm	2.8 – 11 mm

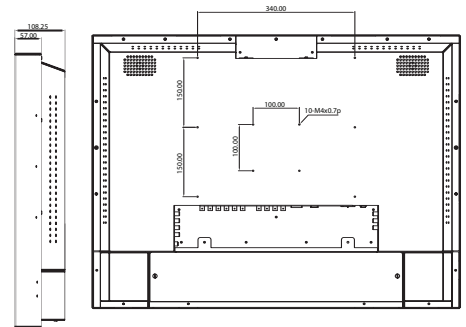
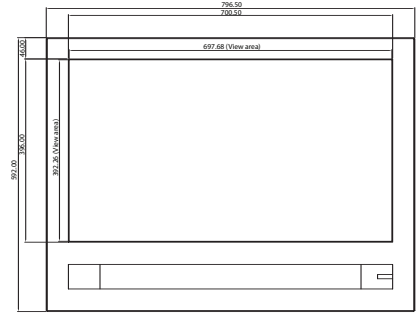
General

Light Sensor (Power save mode)	Yes	Yes
Power Requirement	AC 100 ~ 230v (50/60 Hz)	12VDC / 6.2A
Power Consumption	200 Watts	75 Watts
Operating Temperature	10°F ~ 122°F (-5°C ~ 40°C)	10°F ~ 122°F (-5°C ~ 40°C)
Storage Temperature	-20°F ~ 140°F (0° ~ 50°C)	-20°F ~ 140°F (0° ~ 50°C)
Dimensions (WxHxD)	31.3" x 23.3" x 4.25" (796.9mm x 593.7mm x 107.9mm)	18.5" x 18.0" x 3.98" (472.4mm x 459.4mm x 101.3mm)
Weight	49.6lbs (22.5 kg)	23.2 lbs (10.5 kg)

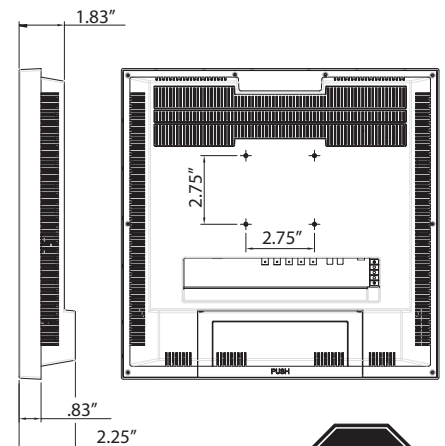
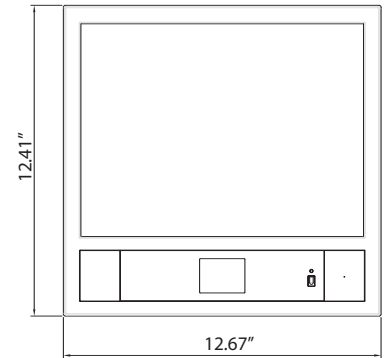
Specifications subject to change without notice.

Dimensional Drawings

NM321W-WDR



NM201A-WDR



ADT Always There®