

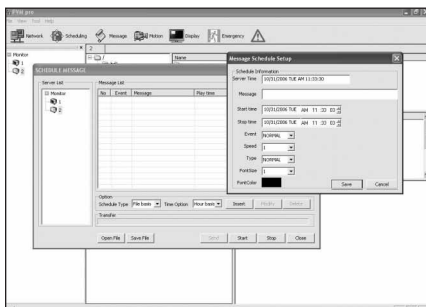
## PVMPro Series Network LCD Public View Monitors



### Product Summary

The Network Monitor (NM) PVM series are high brightness and contrast 32" and 20.1" TFT LCD monitors designed specifically for retail video security and advertising. The monitor series support connection to IP supported networks enabling a central operator to control advertising to the monitor using video/audio files, still imagery (such as JPEG files) and even scrolling banner text for multiple PVMs within a retail location. IP addressing allows each monitor to be controlled individually with its unique message.

Client software allows programming of individual settings and uploading of the type of advertising message sent to the monitor. Various advertising methods can be scheduled to occur throughout the day for maximum exposure of different messages or product advertising. The monitor contains a hard-disk drive (HDD) for storage of the video, audio and image files.



The 32" monitor supports multiple video/audio source inputs, including 2-composite (internal camera or external source), S-VHS, Component, PC-analog (RGB), PC-digital (DVI), and

2-stereo audio inputs. The 20.1" monitor supports 2-composite video inputs (internal camera or external source) and 1-stereo audio input.

The monitor includes one high resolution (480TVL) color camera with an integrated 4-9mm vari-focal, auto-iris lens. The camera video is displayed on the monitor in one of several screen formats including two programmable picture-in-picture (PIP) and the two video inputs are looped-out for use as a security system inputs to a DVR.

Programmable Video-Motion-Detection (VMD) is provided for the two video inputs (internal camera or external source) and allow the camera or source video to be displayed in user defined screen formats on the monitor when motion is detected within the camera's field-of-view.

The monitor series allows for USB and Compact Flash (CF) multi-media insertion and an infrared (IR) remote control is included for monitor programming if the IP network option is not used.

The monitors employ an ambient light sensor and a 'power-savings mode' allowing the monitor LCD back-light to turn off when ambient lighting is reduced.

A powerful 5 watt stereo amplifier provides full-sound to the two front-mounted speakers for optimum audio coverage.

The monitor requires features a universal power input from 100VAC ~ 230VAC (50/60Hz) MAINS supply.

### Features

- Text Generation and Commercial Advertising
- Client Software for Multiple PVM Programming
- Program by Monitor, Advertising, or Time
- File (Images, Video Advertising) Transfer using:
  - IP Addressable Network (LAN)
  - Compact Flash Slot
  - 2 USB Ports
- Ultra-Bright TFT-LCD with Excellent Color Reproduction
- Color Camera with 4-9mm Vari-Focal, Auto-Iris Lens
- Built-In Motion Detection
- Built-In Light Sensor for Sleep Mode Operation
- Multiple Viewing Formats with scalable PIP, PBP Display
- On-Screen Menu Supporting Six Languages
- Front Facing Speakers with Built-In 5W Stereo Audio Amplifier
- External stereo audio inputs
- Stereo audio output (line level - 1/4" Jack)
- 12VDC Output for External Camera
- Video Output Connectors (3) (2) looping video input & (1) Internal-camera output
- Long-Life Backlight
- Rugged Metal Case
- Includes IR Remote Control

### Ordering Guide:

SCN#	Item
NM201S	20.1" PVM Pro Network LCD monitor, 4x3 aspect ratio, one high resolution color camera, IP addressable
NM321W	32" PVM Pro Network LCD monitor, 16x9 aspect ratio, one high resolution color camera, IP addressable

## Specifications

### LCD

#### Size

Pixel Format  
Brightness (Typical)  
Contrast Ratio (Typical)  
Viewing Angle H/V  
Color Depth  
Light Source / Lifetime  
Response Time (Typical)

### NM201S

20.1 inches  
640 x 480 x RGB  
450 cd/m<sup>2</sup>  
800 : 1  
178 / 178  
8bit / 16.7M Colors  
CCFL  
25 ms

### NM321W

32 inches  
1366 x 768 x RGB  
500 cd/m<sup>2</sup>  
500 : 1  
176 / 176  
8bit / 16.7M Colors  
20 EEFLs / 50,000 Hrs  
18 ms

### Video

Composite System Level Input  
Output  
Connector System Level Input  
S-Video Mode Signal Level  
Component Connector Mode Signal Level  
PC (Analog) Connector Mode Signal Level  
PC (DVI) Connector Plug & Play Mode  
Audio Connector Plug & Play Level Input Output Amplifier

NTSC / PAL  
1Vp-p @ 75 ohm  
Internal Camera x 1 or 2  
External Camera x 1 or 2  
Internal Camera x 1 or 2  
External Camera x 1 or 2  
BNC

NTSC / PAL  
1Vp-p @ 75 ohm  
Internal Camera x 1 or 2  
External Camera x 1 or 2  
Internal Camera x 1 or 2  
External Camera x 1 or 2  
BNC  
NTSC / PAL  
1Vp-p (L) , 0.3(C)Vp-p @ 75ohm  
4pin Mini-DIN X 1  
1080p, 1080i, 720p, 480p, 480i  
YPbPr (SOY)  
1Vp-p(Y), 0.3Vp-p(Pb & Pr) @ 75 ohm  
3-terminal RCA x 1  
1366 x 768 @ 75Hz Max  
Analog RGB & H/V Sync.  
0.715Vp-p (RGB) & TTL (Sync.)  
15 Pin D-SUB  
DDC 2B  
1366 x 768 @ 75Hz Max  
DVI-I  
DDC 2B  
Line Level  
2-Terminal RCA x 2  
Phone Jack x 1  
5W x 2  
CF Card Slot  
40GB x 1

### Storage

### Peripheral Interface

Ethernet  
USB 2.0 Host  
USB 2.0 Device  
Video Decoding

RJ45 x 1  
x 1  
x 1

RJ45 x 1  
x 1  
x 1

### Playback

Audio Decoding

MPEG-1, MPEG-2 MP@HL  
MPEG-4.2 ASP@L5(720p),WMV9  
JPEG  
MPEG-1 Layers 1, II and III,  
MPEG-4 Low Complexity AAC

MPEG-1, MPEG-2 MP@HL  
MPEG-4.2 ASP@L5(720p),WMV9  
JPEG  
MPEG-1 Layers 1, II and III,  
MPEG-4 Low Complexity AAC

### Camera (Internal)

No. of Camera  
CCD  
Resolution  
Sensitivity  
S/N Ratio  
Auto Iris  
AWB  
Electronic Shutter  
VF Lens

1 or 2  
1/3"  
470 TVL  
1 Lux ( F2.0, 50IRE )  
50 dB  
Yes  
Yes  
1/60 ~ 1/100,000  
4 - 9 mm ( F2.0 ~ 2.8 )

1 or 2  
1/3"  
470 TVL  
1 Lux ( F2.0, 50IRE )  
50 dB  
Yes  
Yes  
1/60 ~ 1/100,000  
4 - 9 mm ( F2.0 ~ 2.8 )

Light Sensor (Power save mode)

Yes

Yes

Text Overlay

Yes

Yes

Power Requirement

AC 100 ~ 230V ( 50/60 Hz)

AC 100 ~ 230V ( 50/60 Hz)

Power Consumption

TBD

TBD

Operating Temperature

0° ~ 40°F

0° ~ 40°F

Storage Temperature

0° ~ 50°F

0° ~ 50°F

Dimension

TBD

TBD

Weight

TBD

TBD

