



Ultra-High 700TVL Resolution, License Plate Capture Camera

KEY FEATURES AND BENEFITS

- | | |
|---|--|
| <ul style="list-style-type: none">• Designed to Capture License Plate Images with Exceptional Image Quality• Extremely Sensitive CCD and Smart IR LED Lights provide Maximum Legibility under Headlight Glare• 1/3" 960H Sony EXView HAD CCD II, 700TVL Resolution• Minimum Scene Illumination 0Lux, B/W• 10 High Power IR LED Lights, 850nm Frequency• 5 – 50mm Vari-focal Lens | <ul style="list-style-type: none">• External Zoom and Focus Adjustments• OSD menu access with tactile programming switch• Plate Capture Capable up to 55mph at a Distance of 16ft to 90ft• Built-in Heater and Weather-Resistant, IP66 Rated, Housing• Through-Mount-Wiring (TMW) for Easy and Secure Installation• Test Monitor Cable Supplied• 12VDC / 24VAC Dual Voltage Power Source |
|---|--|

ORDERING INFORMATION

| SCN# | Item |
|----------|--------------------------------------|
| CLP7550I | 700TVL, License Plate Capture Camera |

Ultra-High 700TVL Resolution, License Plate Capture Camera

Product Specifications

Model

CLP7550I

Video

Signal Format NTSC
Image Device 1/3" 960H SONY EXview HAD CCD II
Scanning System 2 : 1 Interlace
Total Pixels 1020(H) X 508(V)
Effective Pixels 976(H) X 494(V)
Inter. H/V 15.734KHz(H), 59.94Hz(V)
H.Resolution 700TV Lines B/W
Minimum Illumination 0 Lux (IR LED ON)
S/N Ratio More than 50dB (AGC Off)
Sync System Internal
Gamma $\gamma = 0.45$
Video Output 1.0 Vp-p Composite(75Ω)
Negative Image On / Off
Function Focus Adjust MODE
Day & Night B/W
Lens 5-50mm DC Drive Vari-focal lens
IR LED 850nm, High Power LED, 10EA

General

Speed Range Up to 55mph (88.5km/h)
Capture Distance 16ft ~ 90ft (5m ~ 28m)
Capture Angle Maximum 30° offset
Operating Temperature -40°F ~ 122°F (-40°C ~ +50°C)
Storage Temperature -4°F ~ 140°F (-20°C ~ +60°C)
Power Consumption DC DC12V(±10%), Max 820mA (With Heater)
AC AC24V(±10%), Max 18W (With Heater)
Weight 4.1lbs (1.85kg)
Dimension (WxHxD) 4.25 x 3.8 x 6.1in (108 x 97 x 156mm)
IP Rating IP66

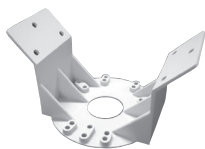
Certifications

UL, FCC

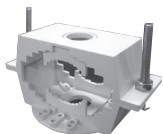
Specifications subject to change without notice.

Optional Accessories

A-CM150 Corner Mount
A-CM151 Pole Mount



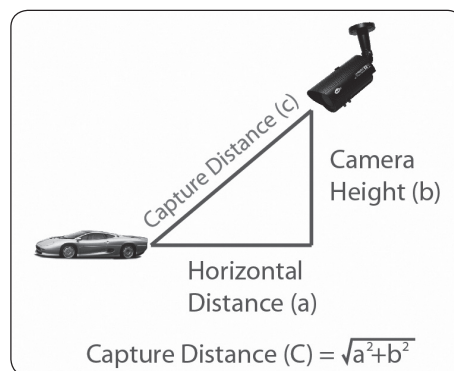
A-CM150
Corner Mount



A-CM151
Pole Mount

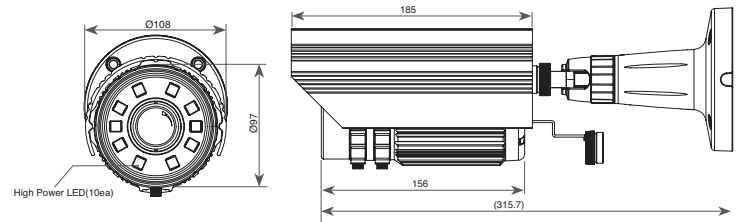
Camera Height

- Must consider height in distance calculation.
- Sharper angle will alter appearance of plate.



| Camera Height (Ft) | Horizontal Distance(Ft) | Capture Distance(Ft) |
|--------------------|-------------------------|----------------------|
| 10 | 10 | 14.14 |
| 11 | 20 | 22.83 |
| 12 | 30 | 32.31 |
| 13 | 40 | 42.06 |
| 14 | 50 | 51.92 |

Dimensions

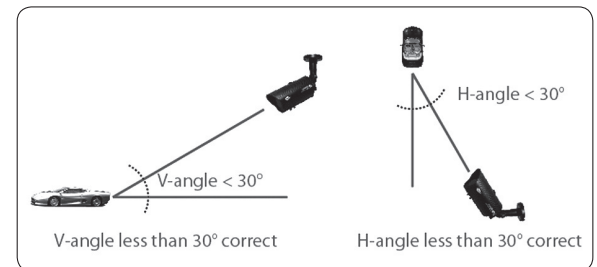


Actual Recorded Video Image of License Plate Capture Camera at Night on a Vehicle Traveling Approximately 45MPH



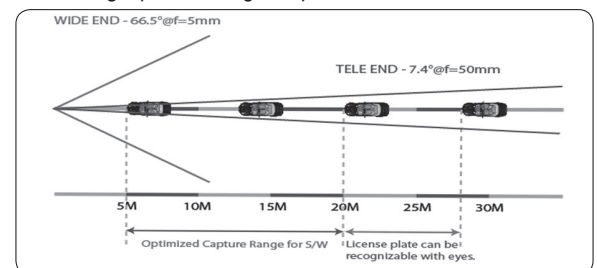
Camera Angles

- Vertical and horizontal angle must not exceed 40 degrees to get optimal view of the license plate.



Capture Zone

- Wider angle provide shorter capture distance.
- Tele angle provide longer capture distance.



For more information visit www.ADT-Matrix.com

© 2013 ADT—All Rights Reserved. ADT Security Services Inc. ADT, the ADT logo and ADT Always There are registered trademarks of ADT Services AG and are used under license.

