



TRUE Day/Night, Digital-WDR, 600TVL Full Body Camera with 2.8-12mm Auto Iris Varifocal Lens

KEY FEATURES AND BENEFITS

- | | |
|---|---|
| <ul style="list-style-type: none">• High performance 1/3" Sony Super HAD CCD Technology• Excellent video quality with 600TVL resolution (700TVL, B/W)• 2.8-12mm A/I Varifocal lens• TRUE Day/Night (TDN) operation with programmable settings• On Screen Display (OSD) with Tactile programming switch• Digital Wide Dynamic Range (D-WDR) and Dead Pixel Cancellation (DPC) | <ul style="list-style-type: none">• 2D Digital Noise Reduction (2D-DNR)• Back Light compensation (BLC) and High Light Compensation (HLC)• Privacy Masking (8 position) and Video Motion Detection (4 areas)• Negative and mirror image, sharpness and lens shading functions• Includes 60ft (18.2m) RJ-11 cable, BNC/RJ-11 adapter and wall/ceiling mount• 12VDC/24VAC/15VDC (RJ-11) |
|---|---|

ORDERING INFORMATION

SCN#	Item
A-CC600TDN-AI	Full body camera, 600TVL, TDN, D-WDR, 2.8-12mm AI, 12/24V, RJ-11



Video
Solutions

TRUE Day/Night, Digital-WDR, 600TVL Full Body Camera with 2.8-12mm Auto Iris Varifocal Lens

Product Specifications

Video

CCD Image Sensor	1/3" SONY Super HAD CCD
Total Pixels	811 (H) x 507(V)
Scanning System	2:1 Interlace
Scanning Frequency	15.734KHz (H), 59.94Hz (V)
Sync. System	Internal / Line Lock / Anti-Rolling
Electronic Shutter	1/60 ~ 1/100,000
Resolution	600TVL color; 700TVL B/W
Minimum Illumination	0.1 lux (color), 0.04 lux (B/W)
Video Output	1.0Vp-p (75-ohm, composite)
S/N Ratio	> 50dB (AGC off, Sense UP off)
OSD Camera Control	Tactile Switch

Functions

2D-DNR	Off/On
Dead Pixel Cancellation (DPC)	Auto (64 Points)
Lens	Manual / DC
Back Light Compensation (BLC)	Off/BLC/HLC (High Light Compensation)
Auto Gain Control (AGC)	Off/Low/Middle/High
Burst	Off/On
White Balance (WB)	AWC/ATW/Manual/Push
Day / Night	Auto/Color/B&W/Ext
Video Motion Detection (VMD)	Off / On (4 Areas)
Privacy Masking	Off / On (8 Position)
Display Title	Off / On
Sharpness	0-31
Lens Shading	Off/On (0-255)
Font Color	16 color, ID & Title
Display	CRT/LCD/User
Negative Image	Off/On
Mirror	Off/On
Digital-WDR	Off/On (0-20)

Connectors / Mechanical

Power Input	2-pin Terminal Block / DC Jack
Composite Video Output	BNC
Lens Mount	CS
Lens	2.8-12mm, F1.2 Varifocal, DC Auto Iris

Environmental

Operating Temperature	14°F ~ 122°F (-10°C ~ 50°C)
Operating Humidity	0~96% (non-condensing)

General

Dimensions (W x H x D)	2.6 x 2.2 x 4.7in (66 x 63 x 120mm)
Weight	0.88lbs (0.4kg)

Power

Voltage	12VDC/24VAC/15VDC (RJ-11)
Power	2.5W

Approvals

UL, FCC, CE, RoHS

Specifications are subject to change without notice.

Optional Accessories

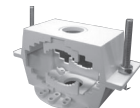
A-EHWMHB	Environmental Camera Housing
A-CM150	Corner mount for A-EHWMHB
A-CM151	Pole mount for A-EHWMHB



A-EHWMHB
Environmental Camera Housing

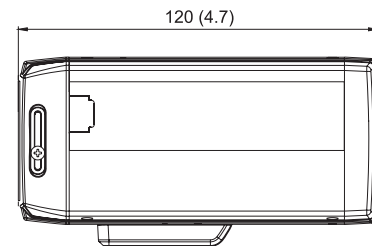


A-CM150
Corner mount for A-EHWMHB

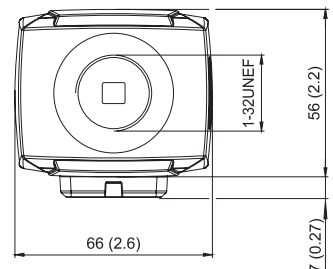


A-CM151
Pole mount for A-EHWMHB

Dimensions



SIDE VIEW



FRONT VIEW

For more information visit www.ADT-Matrix.com

© 2011 ADT—All Rights Reserved. ADT Security Services Inc. ADT, the ADT logo and ADT Always There are registered trademarks of ADT Services AG and are used under license.



ADT Always There®