



(Black IR model case shown;
white case available)

Interior Color Dome, TRUE Day/Night, High Resolution 600TVL with Digital-WDR

KEY FEATURES AND BENEFITS

- High performance 1/3" Sony Super HAD CCD Technology
- Excellent picture quality with 600TVL color resolution (700TVL B/W)
- Smart IR LED's w/ selectable Smart IR Gain Control (IR Model Only)
- 2.8 - 12mm A/I Varifocal Lens
- On Screen Display (OSD) with Tactile programming switch
- Back Light Compensation (BLC) and High Light Compensation (HLC)
- TRUE Day/Night (TDN) operation with programmable settings
- 2D Digital Noise Reduction (2D-DNR)
- Video Motion Detection (4 Areas) and 8 Position Privacy Masking
- Negative and mirror image, sharpness and lens shading functions
- Digital Wide Dynamic Range (D-WDR) and Dead Pixel Cancellation (DPC)
- 12VDC / 24VAC / 15VDC (RJ-11) (Cable Included)
- Test monitor output
- Optional wall and pendant mounts available

ORDERING INFORMATION

SCN#	Item
A-CF6002	Interior Dome, 600TVL, TDN, D-WDR, 2.8-12mm AI, 12/24, RJ-11, Clear Bubble
A-CF600IRW	Interior Dome, 600TVL, TDN, D-WDR, 2.8-12mm AI, IR LED's, 12/24, RJ-11, White Housing, Clear Bubble
A-CF600IRB	Interior Dome, 600TVL, TDN, D-WDR, 2.8-12mm AI, IR LED's, 12/24, RJ-11, Black Housing, Clear Bubble



**Business
Solutions**

Interior Color Dome, TRUE Day/Night, High Resolution 600TVL with Digital-WDR

Product Specifications

Video

CCD Image Sensor	1/3" SONY Super HAD CCD
Total Pixels	811 (H) x 507(V)
Scanning System	2:1 Interlace
Scanning Frequency	15.734KHz (H), 59.94Hz (V)
Sync. System	Internal / Line Lock / Anti-Rolling
Electronic Shutter	1/60 ~ 1/100,000
Resolution	600TVL color; 700TVL B/W
Minimum Illumination	0.1 lux (color), 0.03 lux (B/W), 0.0 lux (B/W IR Model)
Video Output	1.0Vp-p (75-ohm, composite)
S/N Ratio	> 50dB (AGC off, Sense UP off)
OSD Camera Control	Tactile Switch
IR LED	30 Pcs, 850nm, 100ft (30M) distance (IR Model)

Functions

2D-DNR	Off/On
Dead Pixel Cancellation (DPC)	Auto (64 Points)
Lens	Manual / DC
Back Light Compensation (BLC)	Off/BLC/HLC (High Light Compensation)
Auto Gain Control (AGC)	Off/Low/Middle/High
Burst	Off/On
IR Smart	Off/On
IR Smart Gain	0-255
White Balance (WB)	AWC/ATW/Manual/Push
Day / Night	Auto/Color/B&W/Ext
Video Motion Detection (VMD)	Off / On (4 Areas)
Privacy Masking	Off / On (8 Position)
Display Title	Off / On
Sharpness	0-31
Lens Shading	Off/On (0-255)
Font Color	16 color, ID & Title
Display	CRT/LCD/User
Negative Image	Off/On
Mirror	Off/On
Digital-WDR	Off/On (0-20)

Connectors / Mechanical

Power Input	2-pin Terminal Block / DC Jack
Composite Video Output	BNC
Lens Mount	Fixed
Lens	2.8-12mm, F1.2 Varifocal, DC Auto Iris

Environmental

Operating Temperature	14°F ~ 122°F (-10°C ~ 50°C)
Operating Humidity	0~96% (non-condensing)

General

Dimensions (Diameter x H)	5.63 x 4.49in (145.6 x 113mm)
Weight	0.88lbs (0.4kg)

Power

Voltage	12VDC/24VAC/15VDC (RJ-11)
Power	2.0W (5.0W, IR LED On)

Approvals

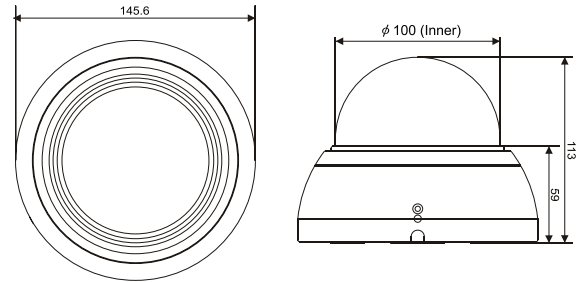
UL, FCC, CE, RoHS

Specifications are subject to change without notice.

Optional Accessories

BTCD5	Tinted Bubble
CV-FLUSHMT	Flush Mount
DB243B	Wall Mount, Black
DB243W	Wall Mount, White
PDA5B	Pendant Mount, Black
PDA5W	Pendant Mount, White
VDSMR	Surface Mount Ring

Dimensions

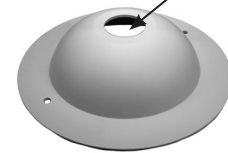


CV-FLUSHMT
Flush Mount

Mounting hole sized for 3/4" conduit connector



DB243W(B)
Wall Mount, White



PDA5W(B)
Pendant Mount, White



VDSMR
Surface Mount Ring

For more information visit www.ADT-Matrix.com

© 2011 ADT—All Rights Reserved. ADT Security Services Inc. ADT, the ADT logo and ADT Always There are registered trademarks of ADT Services AG and are used under license.

