

ADT VIDEO SERVICES COMPLIANT



## H.264 4-Channel Digital Video Recorder, 2-CIF Real Time

### KEY FEATURES AND BENEFITS

- H.264 compression with Real-Time 120-ips 2-CIF recording
- 4-channel looping BNC inputs
- Multiple recording modes: time-lapse, event, pre-event (up to 30 sec) and panic
- Remote Administration Software (RASPlus) features Monitoring, Playback, Recording, Setup, PTZ, Upgrade, Map integration and Multi-Site System Health Monitoring
- Simultaneous Composite and VGA Monitor Outputs
- Powerful Search modes: calendar, time-date and event
- 1-channel audio recording and playback
- Event and alarm notifications through remote monitoring software or email server
- Programmable Video Motion Detection selectable by camera
- PTZ camera control via RS-485 connection
- IR Remote Control and USB Mouse (included)
- Immix® by SureView Compatible

### ORDERING INFORMATION

SCN#	Item
A-ADT4HS2-500	4-ch DVR, H.264, 120-ips, IR, mouse, USB, 500GB
A-ADT4HS2-1TB	4-ch DVR, H.264, 120-ips, IR, mouse, USB, 1TB



**Business  
Solutions**

# H.264 4-Channel Digital Video Recorder

## Product Specifications

### Video

Display Resolution 720x480  
 Record Resolution CIF: 352 x 240 2CIF: 704 x 240  
 D1: 704 x 480  
 Playback/Record Speed (images per second) CIF: 120-ips  
 2CIF: 120-ips D1: 60-ips  
 Compression H.264

### Inputs/Outputs

Alarm Input 4 TTL, NC/NO programmable, 4.3V threshold  
 Alarm Output 1 relay out, terminal block, NC&NO, 0.5A @ 125VAC, 1A @ 30VDC  
 Alarm Reset Input 1 TTL, terminal block  
 Internal Buzzer 80db at 10cm  
 Network Connectivity 10/100 Base Ethernet

### Connectors

Video Input Composite: 4 BNC  
 Video Loop Composite: 4 BNC  
 Monitor Output Composite: 1 BNC  
 Simultaneous CVBS – VGA (15 pin D)  
 Audio In RCA x1  
 Audio Out RCA x1  
 Alarms Terminal block  
 Ethernet Port RJ-45  
 RS232C Port Terminal block  
 RS-485 Serial Port Terminal block  
 USB Port 2 (USB 2.0) front panel  
 IR Port 1 remote control  
 Network Protocols Static IP, ASDL, DHCP, uPNP, RTSP, DVRNS (Enhanced DDNS)  
 Remote Connections Admin: 2 / Watch: 2 / Search: 2  
 Remote Software Immix® by SureView  
 Webguard: Monitoring, Playback, Recording, Setup, PTZ, Upgrade, DVR Status  
 RASPlus: Triplex operation, (User defined 64-channel view), Map integration, Multi-Site System Health Monitoring  
 Clip-Player, AVI, JPEG, BMP  
 Max 120-ips with bandwidth control

Remote Data Export  
 Remote Transmission Rate

### Storage

Primary Storage 1 SATA HDD  
 Backup Storage USB (Flash Drive)

### General

Dimensions (W x H x D) 10.4 x 2.0 x 11.3in (265 x 52 x 288mm)  
 Unit Weight 3.7lbs (1.7kg)  
 Operating Temperature 41°F to 104°F (5°C to 40°C)  
 Operating Humidity 0% to 90%  
 Power 100–240 VAC, 0.8–0.4 A, 50/60Hz  
 Power Consumption Max 25W

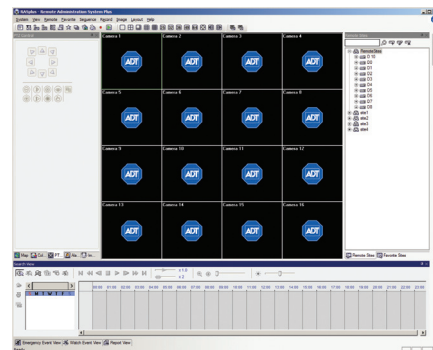
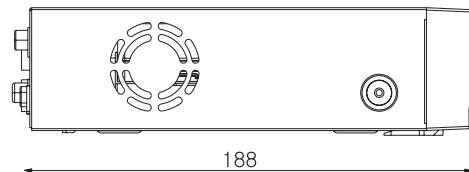
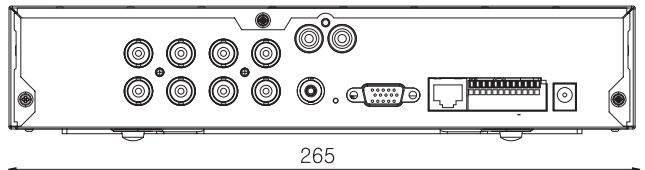
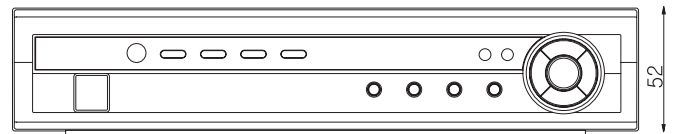
### Approval

\*UL, CE, FCC

\*CAUTION: Risk of Explosion if Battery is replaced by an Incorrect Type.  
 Dispose of Used Batteries According to the Instructions.

Specifications are subject to change without notice.

### Dimensions



RASPlus Client Software

### Storage

The A-ADT4HS2 records up to 120 images per second at 2CIF resolution (30-ips per channel) and the tables illustrate a typical recording duration for CIF, 2CIF and D1 record resolutions with a single video input, with continuous video recording on a 500-GB hard disk drive. The actual storage duration will vary depending on the number of cameras recorded, the image quality selected, the recording speed, recording schedule, motion content of the images and the number of stored events.

500-GB HDD					500-GB HDD					500-GB HDD				
CIF (ips)	Basic Days	Standard Days	High Days	Very High Days	2CIF (ips)	Basic Days	Standard Days	High Days	Very High Days	D1 (ips)	Basic Days	Standard Days	High Days	Very High Days
30	96.5	48.2	32.2	24.1	30	48.2	24.1	16.1	12.1	20	36.2	18.1	12.1	9
20	144.7	72.3	48.2	36.2	15	96.5	48.2	32.2	24.1	10	72.36	36.2	24.1	18.1
15	192.9	96.5	64.3	48.2	10	144.7	72.3	48.2	36.2	5	144.7	72.3	48.2	36.2
5	578.7	289.4	192.9	144.7	5	289.4	144.7	96.5	72.3	1	723.4	361.7	241.1	180.8
1	2893.5	1446.8	964.5	723.4	1	1446.8	723.4	482.3	361.7					

Storage is for one input; divide by number of cameras used.

For more information visit [www.ADT-Matrix.com](http://www.ADT-Matrix.com)

© 2011 ADT—All Rights Reserved. ADT Security Services Inc. ADT, the ADT logo and ADT Always There are registered trademarks of ADT Services AG and are used under license.

