



600TVL High Resolution, TRUE Day/Night, IP68 Weatherproof, Vandal Dome

KEY FEATURES AND BENEFITS

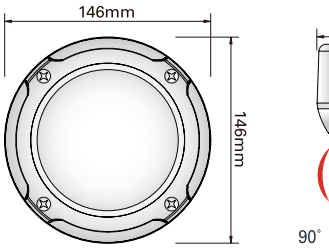
- | | |
|---|--|
| <ul style="list-style-type: none"> • Ultra high sensitive Sony 1/3" Super HAD CCD • 2.8-12mm vari-focal auto-iris lens included • Super high resolution of 600TVL color; 700TVL b/w • IP68 weatherproof rated housing with 3-axis gimbal • IR Version has 33 IR LED's for 0-Lux operation • DNR3 – high performance, advanced digital noise reduction and Sense-Up (selectable 2x-512x) in low-light applications | <ul style="list-style-type: none"> • Selectable True Day/Night (TDN) operation and Image-FLIP (H/V – reverse) • On-Screen Display (OSD) multi-directional tactile switch • DIS – digital image stabilization • Motion detection (8 zones) and 12 programmable privacy zones • Digital zoom up to 16x • Dual voltage 12VDC/24VAC capability |
|---|--|

ORDERING INFORMATION

SCN#	Item
A-CZ6T2812UWC	Vandal Dome color camera, 2.8-12mm VF AI, 600TVL, IP68, 12/24, white
A-CZ6T2812UWCI	Vandal Dome color camera, 2.8-12mm VF AI, 600TVL, IP68, 12/24, white, IR LED

600TVL High Resolution, TRUE Day/Night, IP68 Weatherproof, Vandal Dome

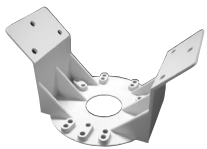
Product Specifications

Image Sensor	1/3" Sony Super HAD CCD	<p style="text-align: right;">Dimensions</p> 
TV System	NTSC	
Total Pixels	811(H) x 508(V)	
Effective Pixels	768(H) x 494(V)	
Scanning Frequency	15.734KHz(H) & 59.94Hz(V)	
Scanning System	2:1 Interlace	
Synchronization	Internal / Line-Lock	
Resolution	600TVL color; 700TVL b/w	
Lens	DC Auto Iris Varifocal Lens(2.8-12mm)	
Minimum Illumination	IR LED OFF: 0.15 Lux, IR LED ON: 0 Lux	
S/N Ratio	More than 52dB	
Video Output	CVBS: 1.0Vp-p / 75 Ohms	
Electronic Shutter Speed	1/ 60sec~1/120,000sec	
OSD	Tactile Switch	
SSDR (Samsung Super Dynamic Range)	On / Off (Level adjustable)	
BLC	BLC / HLC / OFF	
Day & Night	Color / BW / AUTO	
Gain Control	Low / High / Off	
White Balance	ATW / Outdoor / Indoor / Manual / AWC (1,700°K ~ 11,000°K)	
SENS-UP	Auto / Off Selectable x2 ~ x512)	
Privacy Masking	On / Off (12 Programmable Zones)	
DNR3 (Digital Noise Reduction)	On / Off (Level adjustable)	
Motion Detection	On / Off (8 zones)	
Digital Zoom	On / Off x1 ~ x16)	
DIS (Digital Image Stabilization)	On / Off	
Sharpness	On / Off (Level adjustable)	
Flip / Mirror	On / Off	
Power Supply	DC 12V / AC 24V Dual Voltage	
Power Consumption	Non-IR Dome : DC12V 220mA , HEATER ON 400mA / AC24V 105mA , HEATER ON 170mA IR Dome : IR LED ON : DC12V 650mA, HEATER ON 860mA / AC24V 570mA HEATER ON 650mA	
IR Length	Max 30M (IR LED 33pieces)	
Operational Temp.	-31°F ~ 140°F (-35°C ~ +60°C) RH95% Max	
Storage Temp.	-4°F ~ 140°F (-20°C ~ +60°C) RH95% Max	
Dimension (W x H x D)	5.75 x 4.13 x 5.75in (146 x 105 x 146mm)	
Weight	3.3lb (1.5kg)	
Certification	FCC, UL	

Specifications subject to change without notice.

Optional Accessories

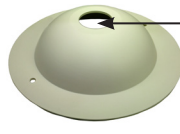
A-CM150	Corner Mount
A-CM151	Pole Mount
TCP-W	Pendant Mount, White
TCW2-W	Wall Mount, White



A-CM150



A-CM151



TCP-W

Mounting hole sized for 3/4" conduit connector



TCW2-W

For more information visit www.TycoIS-Matrix.com

© 2012 Matrix Network, Inc. – All Rights Reserved.

