



700TVL, TRUE Day/Night, Digital-WDR Camera and Outdoor Environmental Housing

KEY FEATURES AND BENEFITS

Camera

- 1/3" Sony EXview 960H CCD II technology with excellent video quality of 700TVL resolution (color)
- TRUE Day/Night (TDN) operation with programmable settings
- Digital Wide Dynamic Range (D-WDR) for high contrast lighting applications
- Programmable 3D Digital Noise Reduction (3D-DNR) and Back Light Compensation Settings
- Sense Up (2-256x) for extreme low light images
- Privacy Masking, Mirror, Video Motion Detection and Digital Image Stabilization
- Varifocal auto iris lens in 2 configurations

Outdoor Housing

- Weatherproof environmental housing with integrated heater/blower
- Wall mount features TMW - Through Mount Wiring
- Hinged side door with dual positive clamps allows easy access to camera
- Optional corner and pole mounts available

ORDERING INFORMATION

SCN#	Item
CE7TW2812UW	Full Body Camera, 700TVL, TDN, D-WDR, 2.8-12mm VF AI, Environmental Housing, 12/24V
CE7TW5050UW	Full Body Camera, 700TVL, TDN, D-WDR, 5-50mm VF AI, Environmental Housing, 12/24V



**Business
Solutions**

MNI2071-01

700TVL, TRUE Day/Night, Digital-WDR Camera and Outdoor Environmental Housing

Product Specifications

Camera

Video	
Image Sensor	1/3" SONY ExView 960H CCD II
Total Pixels	1020(H) x 508(V)
Scanning System	2:1 interlace
Scanning Frequency	15.734KHz(H) x 59.94Hz(V)
Sync. System	Internal / Line Lock (Phase Control)
Electronic Shutter	1/60 ~ 1/10,000 sec; Auto - 100,000
Resolution	700 TVL (color)
Min. Illumination	0.1 Lux(Color), 0.01 Lux(B/W); 0.0001 Lux (Sens-Up B/W) @ F1.2, 50IRE
Video output	1.0Vp-p (75ohm, composite)
S/N Ratio	More than 50dB (AGC OFF, Sense up OFF)
OSD Camera Control	Tactile Switch, RS-485

Functions

Image Enhancement	WDR-Lite
White Balance	ATW/Wide, ATW/Indoor, ATW/Outdoor, Fix/Indoor, Fix/Outdoor, Fix/FL, CRS, ATW Range Adjust
Exposure	Full Auto, Manual Shutter, Flickerless, Low Light (AGC, Sens-Up), UDF(Ultra Deep Field)
DNR	2D + 3D : Gain Adjust, DNR Demo
Day & Night	Auto, Day, Night
Sens-up	256x
Backlight Compensation	EHLIC, AUTO, SPOT
Motion Detection	Max 10 Zone
Digital Image Stabilizer	OFF / ON
Privacy Masking	Max 10 (4-point polygonal, Color, Transparency, Mosaic)
Digital Zoom	4x / D-PTZ Support
Digital Image Effect	V-FLIP, MIRROR, ROTATION, NEGA&POSI, FREEZE, SHARPNESS, STILL SHOT
Display	Camera Name; ON / OFF/Adjustable Location; Camera ID : ON / OFF/Adjustable Location
Language	English, German(TBD), French(TBD), Portuguese(TBD), Spanish(TBD)
Camera ID	001 ~ 255
Camera Control Protocol	Tact Switch, RS485 Auto, FASTRAX, PELCO-D, PELCO-P

Connector

Power Input	2-Pin Terminal Block
Video Output	BNC connector
RS-485	Terminal Block
Lens Mount	C/CS mount
Auto Iris Output	4-pin mini din jack
Mounting Hole	1/4"-20 UNC (top or bottom)

Power

Power Source	AC24V ± 10% / DC12V ± 10%
Power Consumption	Max 3.5 Watts

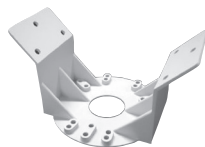
Approvals

FCC, UL

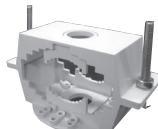
Specifications subject to change without notice.

Optional Accessories

A-CM150	Corner mount
A-CM151	Pole mount



A-CM150
Corner Mount



A-CM151
Pole Mount

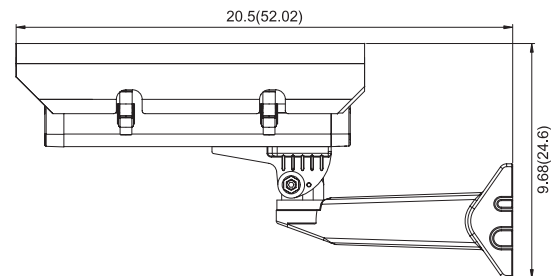
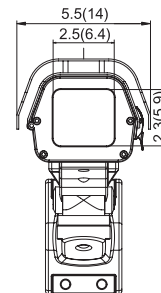
Environmental Housing

Construction	Die-cast and extruded aluminum
Window Size	Side-hinged lid 0.11" thick tempered glass W x H 2.3 x 2.5in (59 x 64mm)
Maximum Camera Size	Accommodates camera/lens combinations (including BNC) up to 3.1 x 3.2 x 11.4in (78 x 82 x 290mm)
Cable Entry	Through Mount Wiring (TMW)
Finish	Polyester powder coat
Dimensions (W x H x D)	5.5 x 9.68 x 20.5in (140 x 246 x 520mm)
Weight	9.15lb (4.15kg)
HEATER	
Power Supply	24VAC
Power Consumption	20W
Heater	ON Heater turns ON at 41°F (5°C)
Heater	OFF Heater turns OFF at 59°F (15°C)
BLOWER	
Power Supply	24VAC
Power Consumption	3.4W
Blower	ON Blower turns ON at 95° F (35°C)
Blower	OFF Blower turns OFF at 68° F (20°C)
IP Rating	IP66
Temperature Range	-49°F ~ 122°F (-45°C ~ 50°C) with heater/blower on

Specifications subject to change without notice.

Dimensions

Unit: inch(cm)



For more information visit www.ADT-Matrix.com

© 2012 ADT—All Rights Reserved. ADT Security Services Inc. ADT, the ADT logo and ADT Always There are registered trademarks of ADT Services AG and are used under license.

