

mGuard User's Manual

This manual describes installation and operation of mGuard software, which is designed to be used with remote digital video recorders (DVRs, network video transmitters and network cameras included).

- ✓ **NOTE:** This product includes software developed by the OpenSSL Project for use in the OpenSSL Toolkit (<http://www.openssl.org>).

Installation

System Requirements

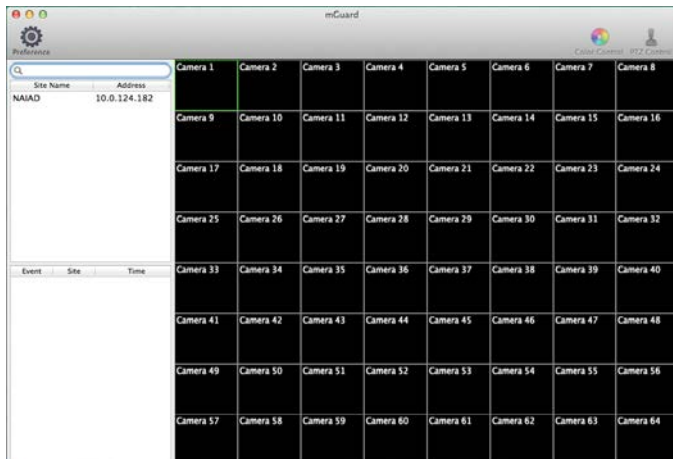
- OS: Mac OS X v10.8 or higher
- CPU: Intel Core2 Duo 2.26GHz or faster
- RAM: DDR3 2GB or higher
- VGA: NVIDIA Geforce 9400 256MB (1024X768@60Hz) or higher
- LAN : 10/100/1000 Base T

1. Connect to App Store.
2. Enter mGuard in the search field at the top-right corner of the App Store screen.
3. Install the mGuard program on your PC and run the program.



Operation

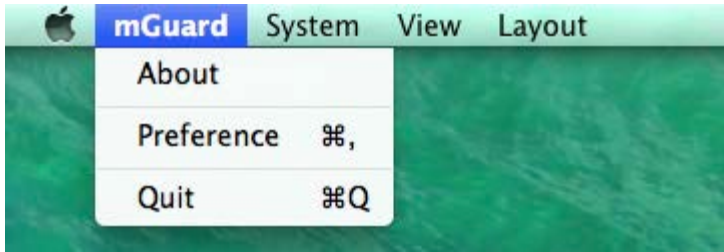
mGuard New GUI



mGuard User's Manual

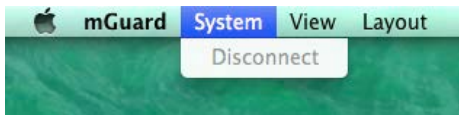
Menu

mGuard



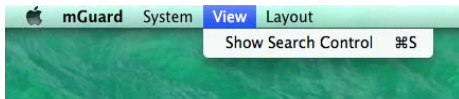
- About mGuard: Displays the software version.
- Preference: See the Toolbar section.

System



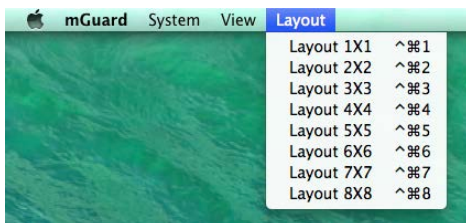
- Disconnect: Disconnect the selected cameras.

View



- Show Search Control

Layout



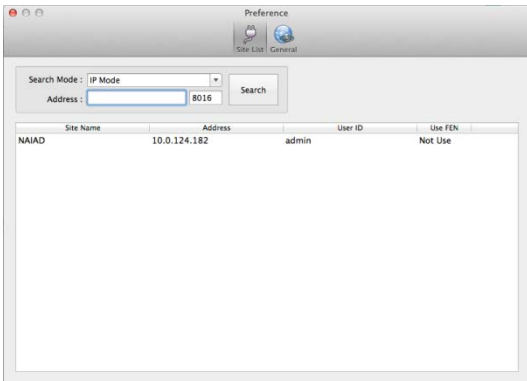
- Layout : Select the desired screen layout. When changing the screen layout, the selected camera on the current screen will be located in the first cell of the new layout.

Tool bar



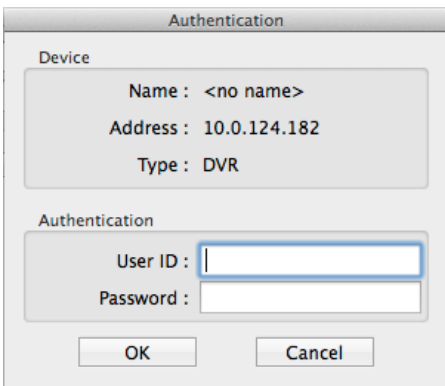
- ✓ Color Control and PTZ Control are activated only in Live mode.

Preference (Site List)



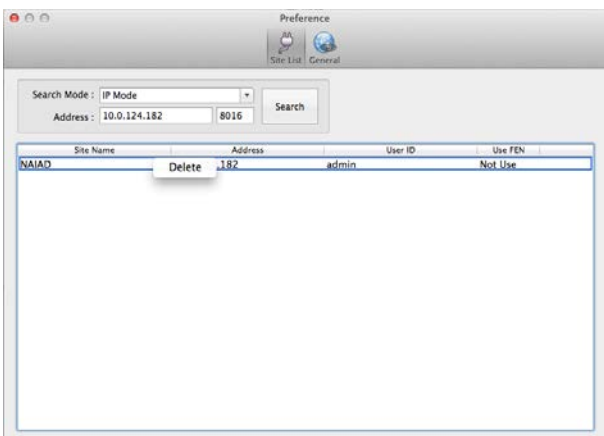
1. Select the Search Mode
IP Mode: Enter the IP address of the remote site and then click the Search button.
FEN(DVRNS) mode : Enter a FEN(DVRNS) name and click the Search button.

2. User ID, Password: Enter the user ID and password set on the DVR.

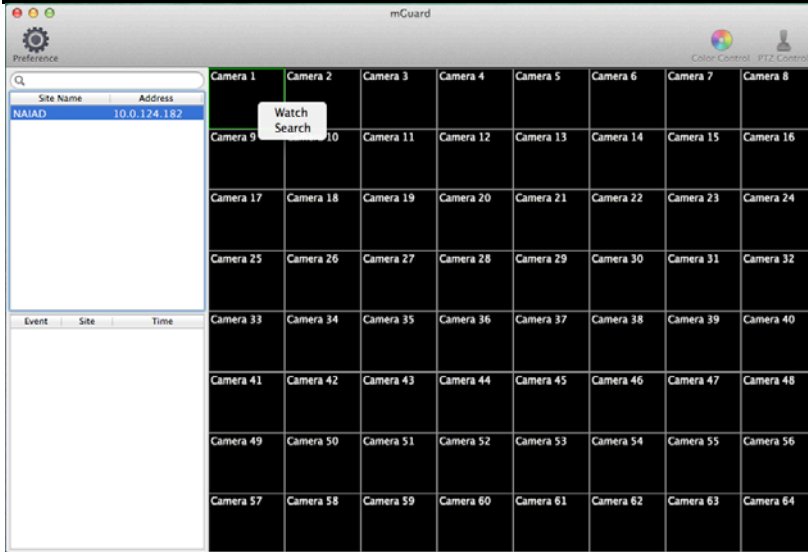


3. Once User ID and Password are granted, there'll be the DVR in the device list.

4. Unregistering can by right click with the mouse cursor on the DVR.



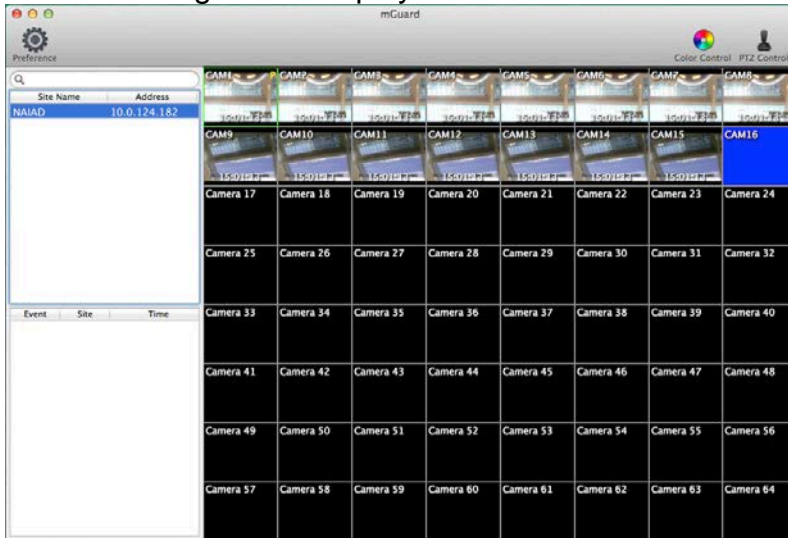
mGuard User's Manual



To connect a remote site on the Watch or Search screen, select the site you want to connect to in the Remote Site panel and then drag and drop it in the desired position on the screen. There will be the drop-down menu.

Watch

1. Live viewing will be displayed on the selected channels.



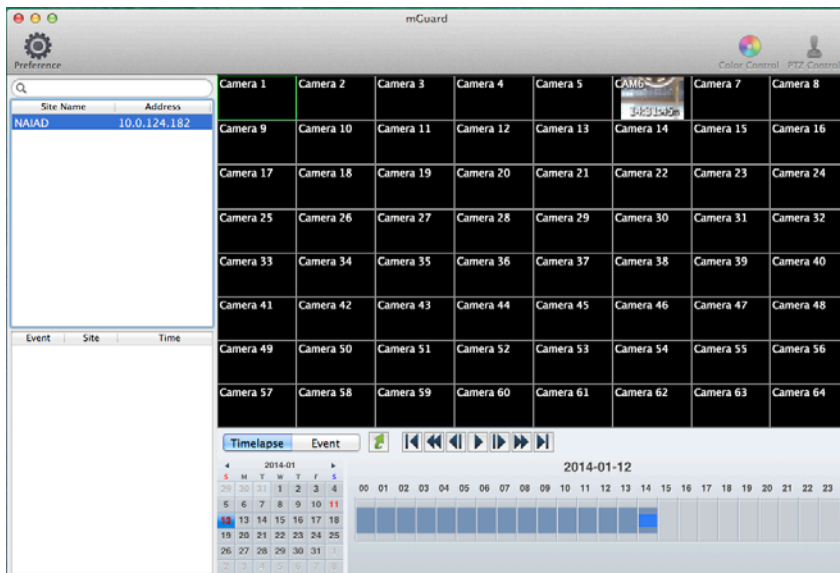
2. Color control and PTZ can be activated depending on the camera supporting.

mGuard User's Manual

Search

1. Search View Panel

a. The Search View panel consists of playback and search controls, time-lapse search table, and event search table.



b. The dates for which recorded images are available are colored by Red and enabled

c. Selecting a date from the calendar initiates the time-lapse search

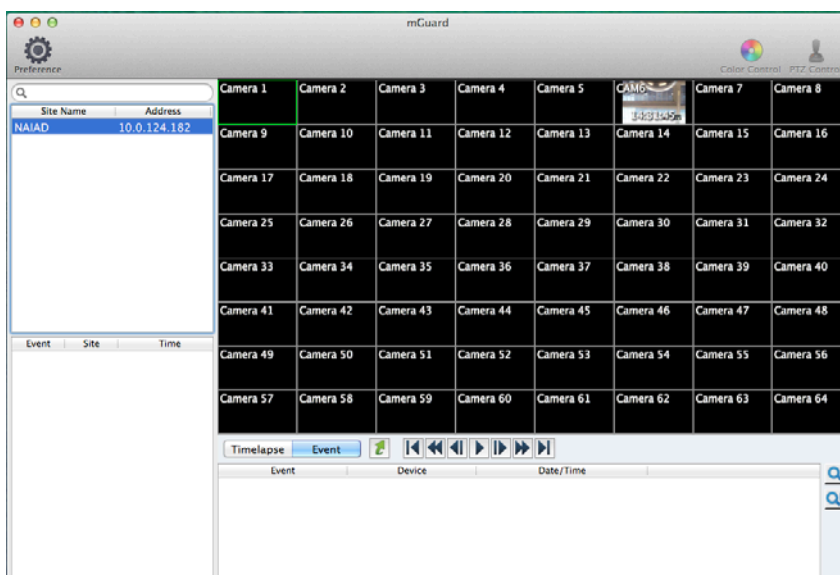
d. Recorded information available from the selected date will be displayed on the timetable

e. The recorded data of all camera channels are displayed by time in one-hour segments and a blue-highlighted segment indicates the selected time that will be played back.

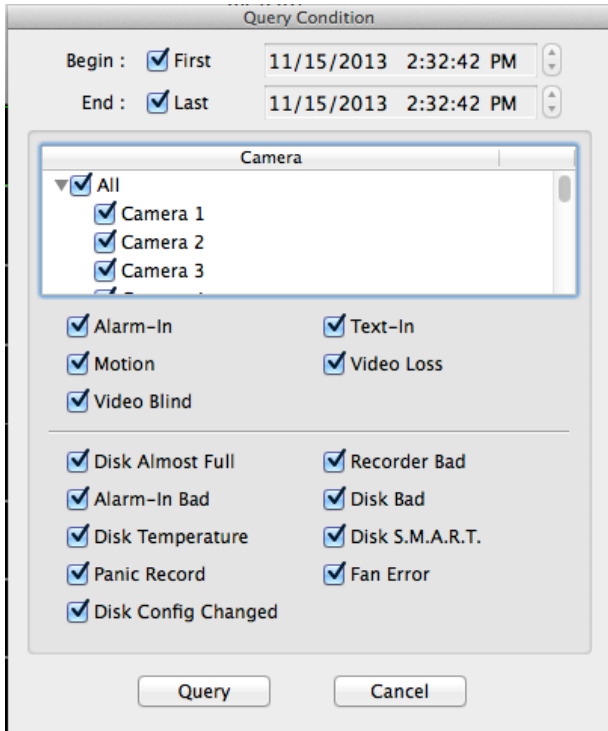
f. Select a specific hour by clicking the mouse on the desired hour segment, and video images will be played back starting with the first image captured within the one-hour segment.

2. Event Search

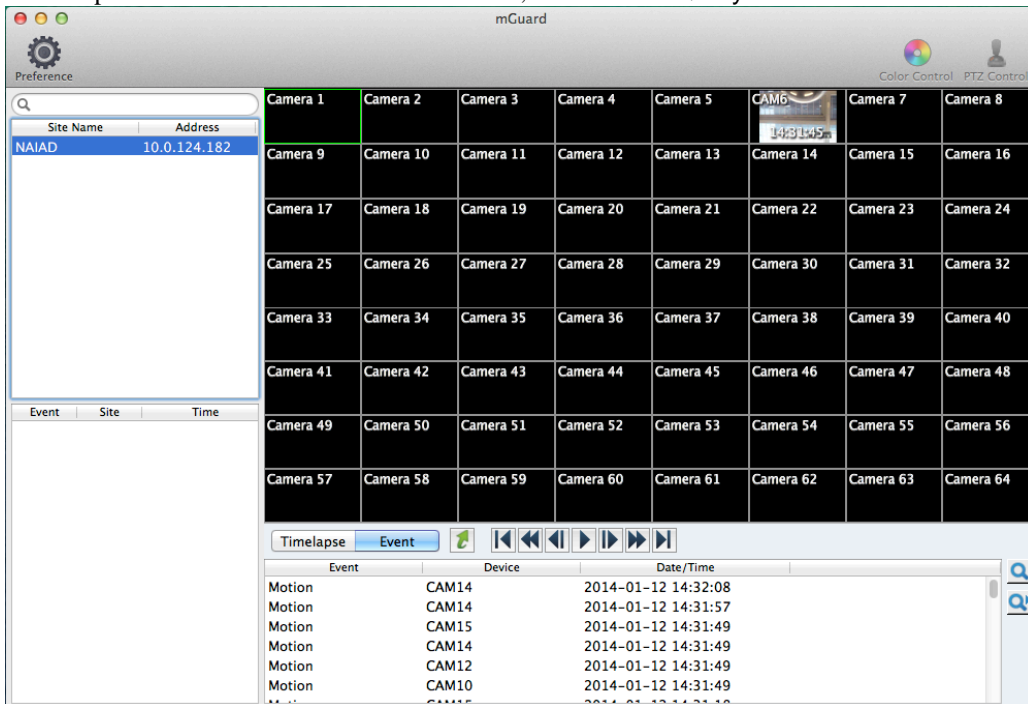
a. Clicking the Event tab to get into the Event mode.



mGuard User's Manual



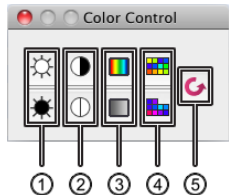
- Set up the search conditions.
- Set up the search criteria for the event search, and click the Query button.




- If you select an event in the list, the recorded data associated with that event will be displayed on the screen.
- The results will be displayed in the event list. The images may be played back using the playback buttons.

mGuard User's Manual

- **Color Control:** Adjust the brightness, contrast, saturation and hue of live video for each camera by clicking the icons on the panel.



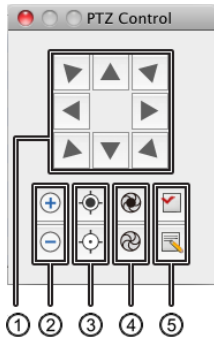
- ① Brightness ② Contrast ③ Saturation ④ Hue ⑤ Undo

Clicking the  icon cancels the image processing operation and reloads the original image. Only the users authorized for color control can adjust the image remotely.


NOTE: It is important that cameras are properly adjusted. These adjustments cannot make up for improperly adjusted cameras when the images are recorded.

NOTE: Not all DVRs support the color control at mGuard. Refer to the user manual of the DVR.



- **PTZ Control:** Control the PTZ for each camera by clicking the icons on the panel.



- ① Move buttons ② Zoom In/Out ③ Focus Near/Far
④ Iris Open/Close ⑤ View Preset/Set Preset

Only the users authorized for PTZ control can control PTZ remotely. The  icon will display on each camera screen when PTZ can be controlled remotely.

NOTE: Not all DVRs support the remote PTZ control. Refer to the user manual of the DVR.

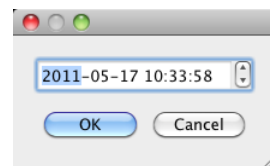
- **Layout:** Select the desired screen layout. When changing the screen layout, the selected camera on the current screen will be located in the first cell of the new layout. When in one of the multi-view layout, clicking the  or  icon will move to the previous or next page.

Search and Playback Buttons (Search Mode)











- ① Goto Time ② Event Search ③ Playback Buttons

- **Goto Time:** Set up the date and time to search to view an image from a specific time.



- **Playback Buttons:** Performs the following functions as described below.

 Go to the First Image	 Fast Backward Play	 Go to the Previous Image
 Stop	 Play	 Go to the Next Image
 Fast Forward Play	 Go to the Last Image	

NOTE: The speed of fast forward depends on network bandwidth and the number of images per second recorded.