

REMOTE ADMINISTRATION SYSTEM

USER'S MANUAL



Table of Contents

Chapter 1 — Overview	1
1.1 In This Manual	1
1.2 RASplus Features	1
1.3 Product Information	1
Chapter 2 — Installation	3
Chapter 3 — Configuration	9
3.1 Screen	9
3.2 Panel	10
3.3 Menu	15
3.4 Toolbar	30
Chapter 4 — Operation	31
4.1 Live Monitoring	31
4.2 Playback and Search	33
4.3 Additional Functions	39
4.4 Panic Recording	40
4.5 Status View	41
Appendix A — Reviewing Video Clips	43
Appendix B — DVR Name Service (DVRNS)	45
Appendix C — Map Editor	46
Appendix D — Monitoring Using Mobile Devices	51

Chapter 1 – Overview

1.1 In This Manual

This manual describes installation and operation of RASplus (Remote Administration System Plus) software, which is designed to be used with remote digital video recorders (DVRs, network video transmitters and network cameras included).

1.2 RASplus Features

RASplus program is an integrated software program that controls system management, video monitoring, video recording and image playback of multiple remote sites. RASplus offers the following features:

- Checks and reports status of remote DVRs
- Notification of events detected at remote sites
- Remote monitoring of live camera images
- Panic recording of monitored images
- Time-lapse and event search of recorded images
- Remote software upgrades and system programming
- View system and event log information of remote DVRs
- Remote monitoring of multiple remote sites using maps
- Connect up to 64 remote sites (up to 16 remote sites for remote search) at a time

NOTE: This product includes software developed by the OpenSSL Project for use in the OpenSSL Toolkit (<http://www.openssl.org/>).

NOTE: The software included in this product contains some Open Sources. You may obtain the complete corresponding source code from us. See the Open Source Guide on the software CD (*OpenSourceGuide\OpenSourceGuide.pdf*) or as a printed document included along with the User's Manual.

1.3 Product Information

Package Components

- User's Manual (this document)
- Installation CD

System Requirements

- Operating System: Microsoft® Windows® XP x86 (32 Bit) (Service Pack 3), Microsoft® Windows® Vista x86 (32 Bit) (Service Pack 1), Microsoft® Windows® 7 or Microsoft® Windows® 8
- CPU: Intel Pentium IV (Celeron) 2.4GHz or faster
- RAM: 512MB or higher
- VGA: AGP, Video RAM 8MB or higher (1024x768, 24bpp or higher)

Chapter 2 – Installation

CAUTION: If an older version of RASplus software is installed on your computer, you should uninstall the older version first.

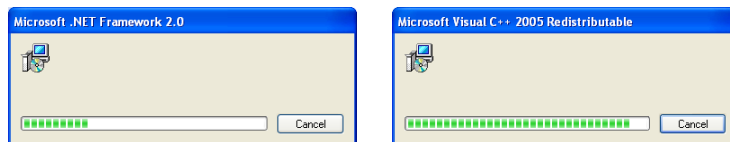
NOTE: In the Windows Start menu, go to Control Panel. Double click the *Power Options* to open the Management Properties dialog box. Under the *Power Schemes* tab, set both *Turn off monitor* and *Turn off hard disks* to *Never*.

1. Insert the installation CD.
2. Run the setup.exe file.

NOTE: Run the file as the administrator user, otherwise the installation will fail. If you have logged on as other user, you will be asked to enter the administrator user name and password when running the file.

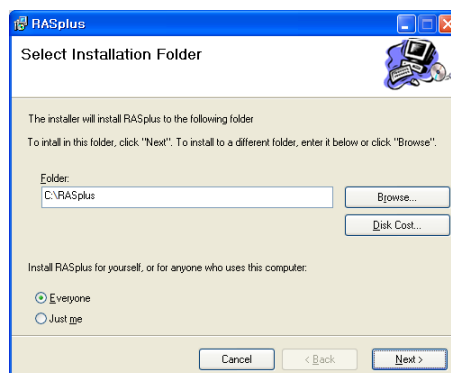
NOTE: The *User Account Control* window might appear when using Microsoft Windows Vista or later operating system. Click *Allow* and install RASplus software following the instructions.

3. The .NET Framework and the Visual C++ Runtime Libraries are installed automatically.

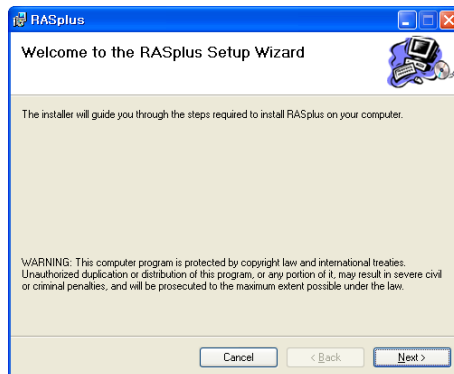


NOTE: Installing the *.NET Framework* and the *Visual C++ Runtime Libraries* is required for RASplus to operate properly. This installation step will be skipped if they are already installed on your computer.

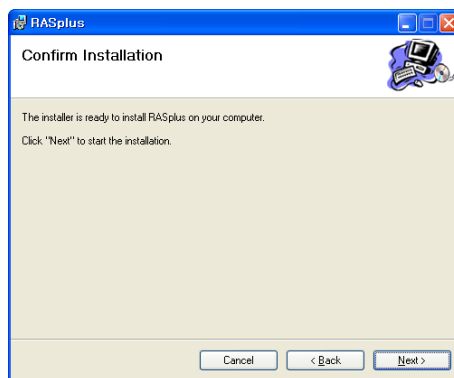
4. Designate the folder path to install RASplus and select the user(s) who can use RASplus. Then click Next.



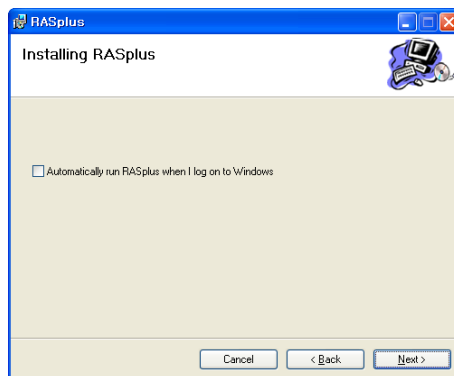
- When the following dialog box appears, click **Next**.



- Click **Next**.



- Select whether or not to run RASplus automatically when logging onto Windows, and then click **Next**.

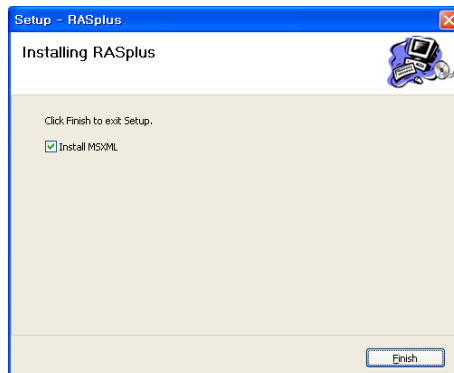


8. Set the language option by selecting either **Select language when starting RASplus** or **Always start RASplus using the language below**. If you select **Always start RASplus using the language below**, select the desired startup language from the list of available languages and then click **OK**.

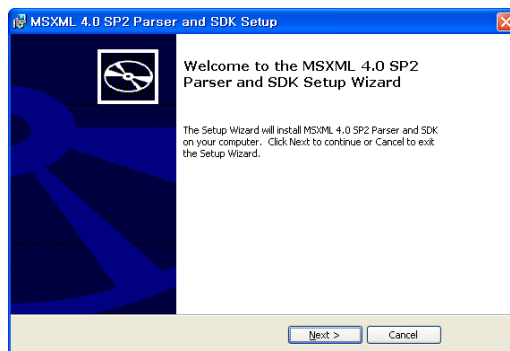


NOTE: To properly display the selected language, your PC's operating system should be set to support the selected language.

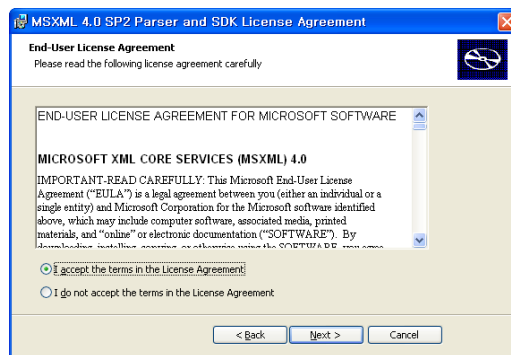
9. When the following dialog box appears after finishing the RASplus installation, select **Install MSXML** application and click **Finish**. Installing the MSXML is required for RASplus to initiate.



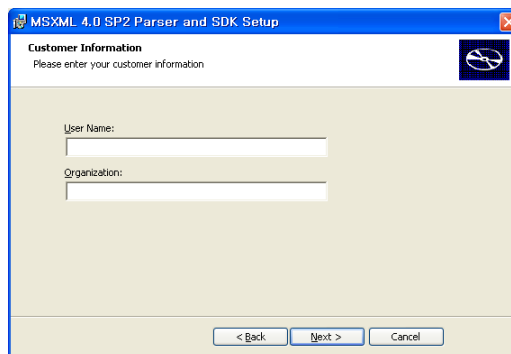
10. Click **Next**.



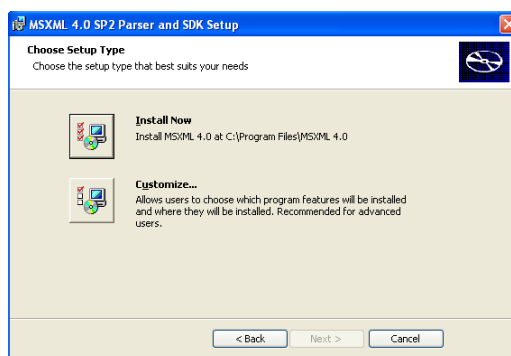
11. Select I accept the terms in the License Agreement, and click Next.



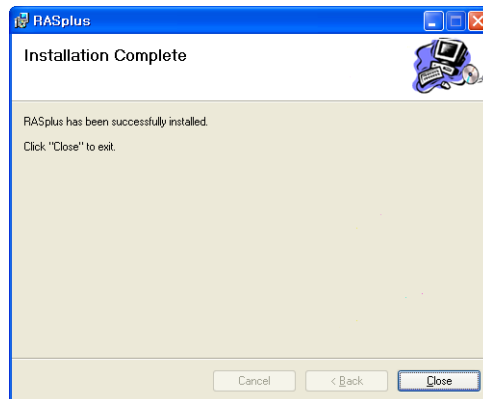
12. Enter User Name and Organization, and click Next.




13. Select Install Now and install MSXML following the instructions.



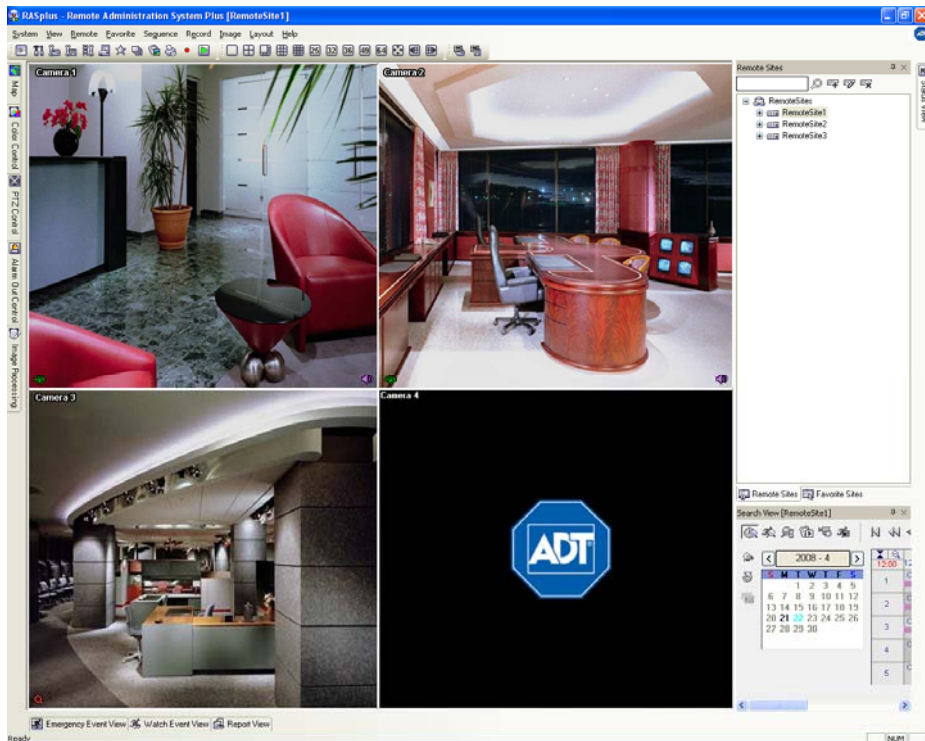
14. Click **Close** to complete the installation.



Chapter 3 — Configuration

After installing the RASplus software, you will find the RASplus shortcut icon  on the desktop. Run the RASplus program by double clicking the icon. The RASplus program consists of the screen, 12 docking panels, menu and toolbar.

NOTE: Some panels will not be displayed on the screen in the default frame layout. To display those panels, open the **View** menu at the top of the screen and select each panel from the menu.



3.1 Screen



The Screen displays images from selected cameras in the live monitoring or playback modes. RASplus provides various multi-screen layouts; single-screen, quad, 1+7, 3x3, 4x4, 5x5, 1+32, 6x6, 7x7, 8x8 and full-screen.


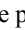

NOTE: There might be a problem with screen display or screen update due to low image transmission speed when using Microsoft Windows Vista or later operating system. In this situation, it is recommended that you disable the Auto Tuning capability of your computer.

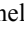

Run the *Command Prompt* with elevated administrator permissions (Go to the Start Menu → All Programs → Accessories → Command Prompt → Click the right mouse button and select the *Run as administrator* option). Then enter “netsh int tcp set global autotuninglevel=disable” and click the OK button. Restart your computer to apply the changes.

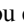
If you want to enable the Auto Tuning capability again, enter “netsh int tcp set global autotuninglevel=normal” after running the Command Prompt with elevated administrator permissions. Restart your computer to apply the changes.

3.2 Panel

RASplus has many powerful tools that can be used to streamline your work. Most of the tools are located on 12 docking panels that can be placed on the screen where they are most convenient. You can keep your screen free of clutter by displaying only the panels you use most frequently.

Clicking the  icon in the upper right corner of a panel enables the auto-hide feature. Tabs for auto-hidden panels are displayed on the edge of the screen. Scrolling over an auto-hidden panel tab will cause the panel to "fly" out. You can cause the panel to lock back into its original display position by clicking the  icon. Clicking the  icon hides the panel without a tab. Hidden panels can be displayed by selecting them from the drop-down menus.

Panels can be resized, moved and combined with other panels creating a workspace that fits your needs. To resize a panel, scroll the cursor over the edge of the panel until the cursor changes to  or . Then click the left mouse button and drag the panel border to enlarge or reduce its size.

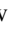
To move a panel to a different position on the screen, scroll the cursor over the title bar of a panel that has not been auto-hidden until it changes to . Once you click and drag, position arrows will display on the screen.

The four position arrows along the outer edges allow you to place the panel along the given edge independent of the other panels. When you drag the panel over a position arrow, a transparent blue box will display showing the new panel position. If you are satisfied with the position, release the left mouse button and the panel will move to its new position.

You can also move a panel so that it is associated with another panel. To do this, drag the panel over the panel you want it associated with, and the icon with four position arrows will center over that panel. Scrolling the cursor over the icon arrows will cause a transparent blue box to display where the panel will be located. If you are satisfied with the position, release the left mouse button and the panel moves to its new position.



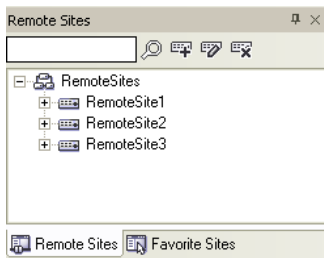
It is possible to combine panels so that they take up less space on the screen. Combined panels have a row of tabs across the bottom. Clicking a tab brings that panel to the foreground.

To combine panels, move the cursor to the title bar of the panel you want to move. Click and drag the panel onto the panel you want to combine it with. If the panels can be combined, the four-position arrow icon will have a tab symbol in the center. Drag the cursor over the tab symbol , and a new tab appears on the panel. Release the mouse button and the panels will now be combined.



The layout possibilities are virtually unlimited. With a little experimentation you will be able to lay out the screen so that it best meets your workflow.

Remote Sites Panel



The **Remote Sites Panel** displays a list of remote sites registered during RASplus System setup and a list of installed cameras at the remote sites.

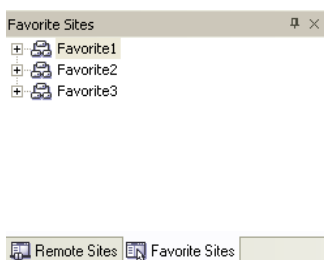
- : Entering the site name in the query box and clicking the icon allows you to find the remote site easily in the Remote Sites list.
- : Clicking the icon allows you to register the remote site.
- : Clicking the icon removes the selected remote site from the list.
- : Clicking the icon allows you to edit the site information of the selected remote site from the list.

To connect to a remote site, select the site or camera you want to connect to from the list and then drag and drop it in the desired position on the screen or the Status View panel. The screen displays images from selected cameras, and the Status View panel displays the system status information of the connected remote site.

Selecting a site from the list and clicking the right mouse button displays a popup menu.

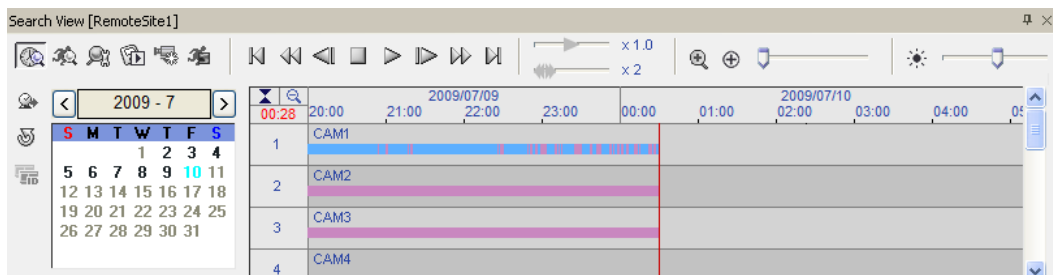
- **Connect Status View:** Displays the remote site status information in the Status View panel. Refer to 4.5 Status View for more details.
- **Remote Setup:** Allows you to change the setup of the remote DVR. Refer to 3.3 Menu – System Menu, Setup for more details.
- **Remote System Log, Remote Event log:** Displays the system log and event log information of the remote DVR. Refer to 3.3 Menu – Remote Menu for more details.
- **MNI Desktop:** Allows you to connect to the remote site using the MNI service. For this function to work the MNI service must be enabled in the remote DVR and a port number and password for the MNI remote connection should be registered during the remote site registration at RASplus. Refer to the user manual of the remote DVR for details about the MNI service. This function may not be supported, depending on the specifications and version of the remote DVR.

Favorite Sites Panel



The **Favorite Sites panel** displays the list of Favorite sites registered during RASplus System setup. Selecting the Favorite site you want to connect to from the list and then dragging and dropping it in the desired position on the screen connects all remote sites registered in the Favorite site automatically.

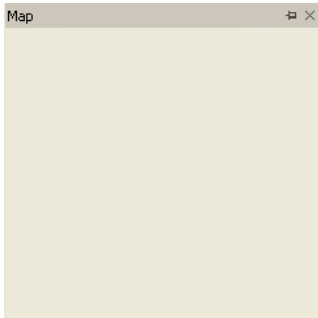
Search View Panel



The Search View panel allows time-lapse or event searching of recorded data on the remote DVR.

NOTE: Refer to *4.2 Playback and Search* for more details.

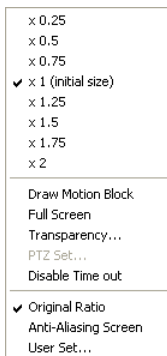
Map Panel



The **Map** panel allows efficient monitoring of the remote sites by displaying a map of the selectable site. Click the right mouse button on the map panel to select the map image file (.rmp) you want to monitor from the list. The selected map image displays in the Map panel and the sites registered on the map image file will be connected. When the selected map is linked with sub-maps, clicking the linked image moves to the sub-map.

NOTE: Refer to *Appendix C – Map Editor* for details on editing maps.

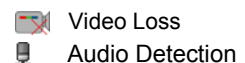
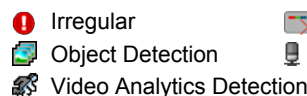
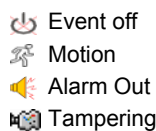
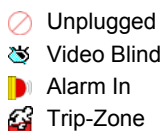
The Map panel pops up another screen when alarm-in, motion or video loss events are detected or when you click the device icon according to the Map Editor settings. Change the popup screen location by clicking the left mouse button on the screen and dragging it to where you want it located. Clicking the right mouse button on the popup screen displays the following popup menu.



- **x0.25 to x2:** Sets the desired size of the Map popup screen.
- **Draw Motion Block:** Displays the area that detects motions on the screen. (Network Video Transmitter connection only)
- **Full Screen:** Enters the full-screen mode of the Map popup screen.
- **Transparency...**: Adjusts the transparency of the popup screen.
- **PTZ Set...**: Controls pan, tilt and zoom of the selected PTZ camera.
- **Disable Time Out:** Continues displaying the popup screen when events are detected by disabling the dwell time out.
- **Original Ratio:** Displays the Map popup screen by matching its original aspect ratio.
- **Anti-Aliasing Screen:** Enhances image display quality on the popup screen by smoothing stair stepping (aliasing) effects in the enlarged image.
- **User Set...**: Sets the mode of the current popup screens displayed on the monitor. For example, the monitor displays the current popup screen with enough frames for 16 cameras when you select 4x4.

NOTE: Refer to *Appendix C- Map Editor – Device Setting* section for more details about the popup function.

To connect to the remote site, select the device you want to connect to from the Map panel and then drag and drop it in the desired position on the screen or the Status View panel. Also, placing the mouse cursor on the device on the map displays the device status. When the device detects any event or the device is not working properly, the following status icons appear (maximum of 4).

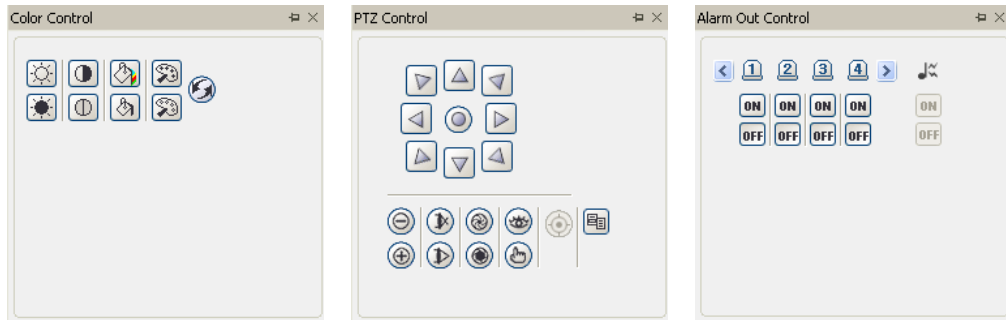


NOTE: The device status is displayed as *Irregular* based on to the system check settings and as each event according to the event detection settings on the remote DVR.

NOTE: Status icons may not be supported, depending on the specifications and version of the remote DVR.

Clicking the right mouse button on the Map panel causes a text menu screen to display. Selecting **Watch Event View** from the menu displays the event information of the connected remote sites. Selecting **Close** disconnects the current connection on the Map panel.

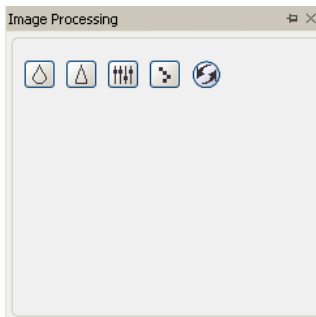
Color, PTZ and Alarm Out Control Panels



Three panels allow color control, PTZ control and alarm out control while live monitoring a remote site.

NOTE: Refer to **4.1 Live Monitoring** for more details.

Image Processing Panel



The Image Processing panel allows enhancing played back images.

NOTE: Refer to **4.2 Playback and Search** for more details.

Emergency Event View Panel

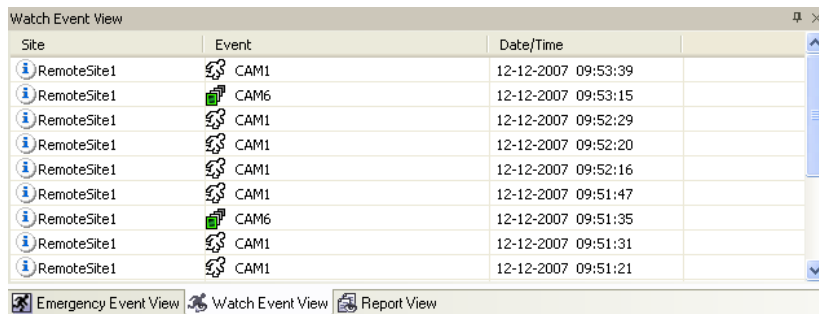
Emergency Event View			
Site	Event	Date/Time	
<input type="checkbox"/> RemoteSite3	CAM4	03-17-2008 11:35:05 PM	
<input checked="" type="checkbox"/> RemoteSite3	CAM3	03-17-2008 11:35:05 PM	
<input checked="" type="checkbox"/> RemoteSite3	CAM2	03-17-2008 11:35:05 PM	
<input checked="" type="checkbox"/> RemoteSite3	camera	03-17-2008 11:35:05 PM	
<input checked="" type="checkbox"/> RemoteSite3	CAM4	03-17-2008 11:34:57 PM	
<input type="checkbox"/> RemoteSite3	CAM3	03-17-2008 11:34:57 PM	
<input type="checkbox"/> RemoteSite3	CAM2	03-17-2008 11:34:57 PM	
<input type="checkbox"/> RemoteSite3	camera	03-17-2008 11:34:57 PM	
<input type="checkbox"/> RemoteSite3	CAM4	03-17-2008 11:34:53 PM	

Emergency Event View | Watch Event View | Report View

The Emergency Event View panel displays a list of events (preset for notification at the remote site) that were called from individual remote sites (LAN connection only). Selecting an event from the list and then dragging and dropping it in the desired position on the Watch or Search screen connects to the remote site, and a checkmark is placed in the box at the left. Selecting an event or site from the list and then clicking the right mouse button causes a tooltip to appear, which contains the emergency event instruction from the remote site.

NOTE: The Emergency Event View function is available only for the remote sites that were set to notify the RASplus system when configuring each event setup.

Watch Event View Panel



Site	Event	Date/Time	
RemoteSite1	CAM1	12-12-2007 09:53:39	
RemoteSite1	CAM6	12-12-2007 09:53:15	
RemoteSite1	CAM1	12-12-2007 09:52:29	
RemoteSite1	CAM1	12-12-2007 09:52:20	
RemoteSite1	CAM1	12-12-2007 09:52:16	
RemoteSite1	CAM1	12-12-2007 09:51:47	
RemoteSite1	CAM6	12-12-2007 09:51:35	
RemoteSite1	CAM1	12-12-2007 09:51:31	
RemoteSite1	CAM1	12-12-2007 09:51:21	

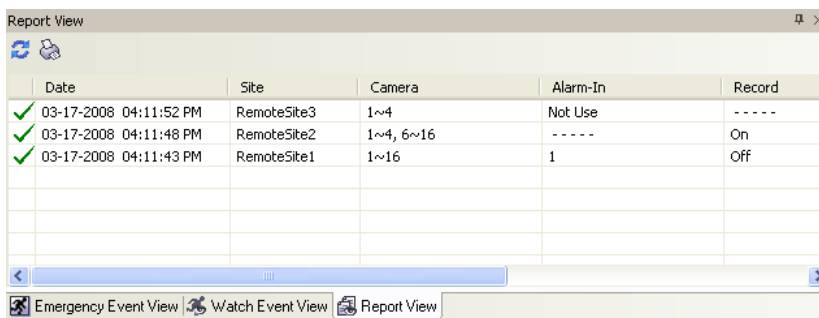
Emergency Event View | Watch Event View | Report View

The Watch Event View panel displays events detected at individual remote sites while RASplus is in the live monitoring mode. The description of event icons is as follows:

Alarm-In On	Alarm-In Off	Motion Detection
Object Detection	Video Loss	Video Blind
Text-In	Alarm-In Bad	Recorder Bad
Disk S.M.A.R.T.	Disk Bad	Disk Full
Disk Almost Full	Disk Config Change	Disk Temperature
Panic Recording On	Panic Recording Off	Fan Error On
Fan Error Off	System Boot Up	System Alive
System Restart	System Shut Down	Video Analytics Detection
Audio Detection	Trip-Zone	Tampering



NOTE: Some event icons may not be supported, depending on the specifications and version of the remote DVR.

Report View Panel



	Date	Site	Camera	Alarm-In	Record
✓	03-17-2008 04:11:52 PM	RemoteSite3	1~4	Not Use	----
✓	03-17-2008 04:11:48 PM	RemoteSite2	1~4, 6~16	----	On
✓	03-17-2008 04:11:43 PM	RemoteSite1	1~16	1	Off

Emergency Event View | Watch Event View | Report View

The Report View panel displays the system status information of remote sites. RASplus checks the remote site and reports system status. Clicking the  icon on the panel reloads the data and clicking the  icon prints the report out. Report Setup must be configured during RASplus System setup for this feature to function. Refer to 3.3 Menu – System Menu for more details.

NOTE: Some report options may not be supported, depending on the specifications of the remote DVR.

Status View Panel



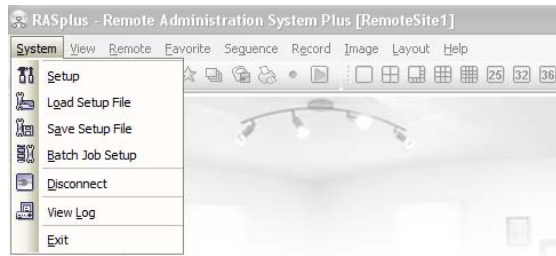
RASplus provides a status display, remote setup, system log and event log view of the connected remote site in real-time. To display the status of the remote site, select a camera or a site from the Remote Site list and drag it to the Status View panel. You can also select Connect Status from the popup menu displayed by clicking the right mouse button after selecting the site from the Remote Site list.

NOTE: Refer to 4.5 Status View for more details.

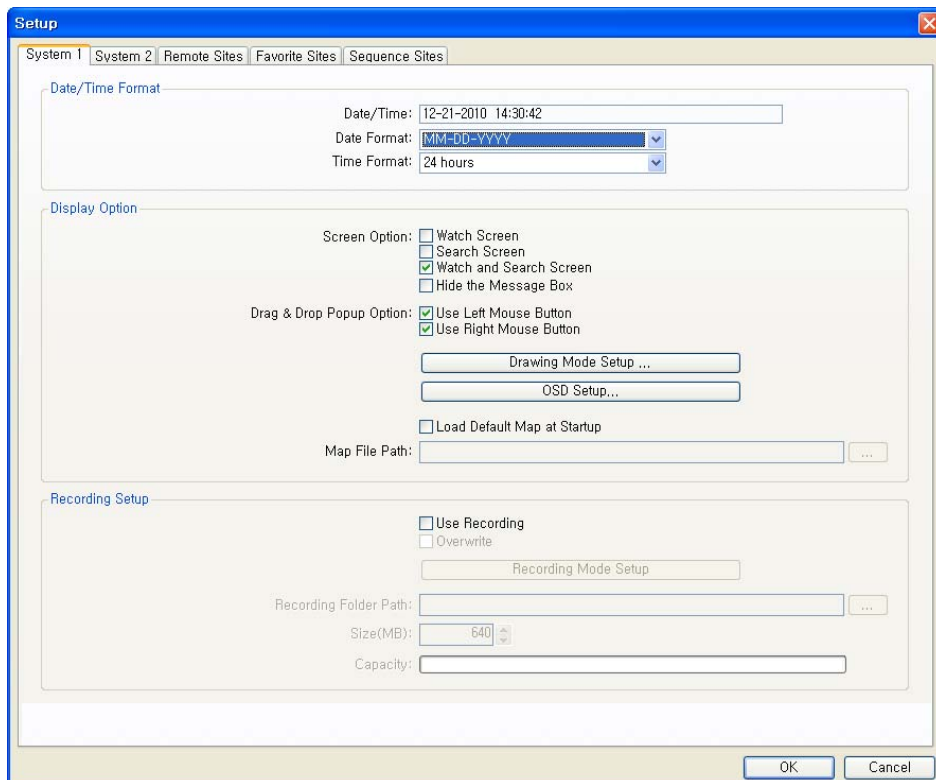
3.3 Menu



System Menu

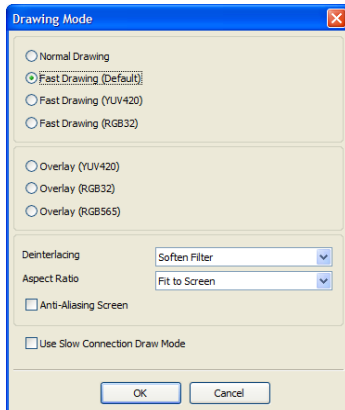


- **Setup:** Allows setting up the system operation and remote site configuration.



System 1: Set up the date/time format for RASplus, display option, and panic recording function.

- **Date/Time Format:** Set the date/time format.
- **Display Option:** Set up the screen display, drag & drop popup option, display acceleration and OSD.
 - **Screen Option:** Select **Watch Screen** to use the screen for live monitoring only, **Search Screen** to use the screen for search only, or **Watch and Search Screen** to use the screen for both live monitoring and searching. Selecting **Hide the Message Box** hides the message box that displays the status information about RASplus and remote site connections.
 - **Drag & Drop Popup Option:** Select which mouse button will be used when displaying popup menu screens from **Use Left Mouse Button**, **Use Right Mouse Button** or both (**Watch and Search Screen** mode only).
 - **Drawing Mode Setup...**: Set up the display options for the screen.



- **Normal Drawing:** Depends on your PC's CPU performance and displays images in low speed (DIB Draw Mode).
- **Fast Drawing (Default):** Displays image in normal speed (Direct Draw Mode).
- **Fast Drawing (YUV420/RGB32):** Depends on your PC's video card performance and displays images in high speed (Direct Draw Mode).
- **Overlay (YUV420/RGB32/RGB565):** Displays image in high speed (Direct Draw Overlay Mode).
- **Deinterlacing:** Set up the deinterlace filter. Using a deinterlace filter for interlaced video enhances image display quality by eliminating horizontal scan lines and noise in areas with motion.
- **Aspect Ratio:** Set up the image aspect ratio displayed on the screen. Selecting Fit to Screen displays images by fitting them to the screen size, and selecting Original Ratio displays images by fitting them within the screen size while maintaining their original ratio.

- **Anti-Aliasing Screen:** When using this option, the image display quality on the screen will be enhanced by eliminating stair-stepping (aliasing) effects in the enlarged image.
- **Use Slow Connection Draw Mode:** When using this option in slow network environments such as ADSL and connecting to a remote site in the live monitoring mode, the time taken to display the first image on the screen will be reduced.

NOTE: If the image cannot be displayed properly because of your PC's specifications, lower the drawing mode level.

NOTE: While in the *Fast Drawing* mode, the drawing speed might decrease when the RASplus screen is not located on the primary monitor.

NOTE: *Overlay Drawing* mode may not be supported, depending on the type of video card installed in your PC. Video cards with an ATI chipset are recommended.

NOTE: When using dual monitors, selecting *Overlay Drawing* will display the image only on the primary monitor.

NOTE: When using a low-end computer, image drawing speed might decrease while using a deinterlace filter depending on the type of deinterlace filter.

NOTE: When using a low-end computer, image drawing speed might decrease when the *Anti-Aliasing Screen* option is selected.

- **OSD Setup...:** Select options to display on the screen.
- **Load Default Map at Startup:** Select whether or not the user-defined map file is loaded automatically when RASplus starts, and designate the path of the map file (.rmp) to load.
- **Recording Setup:** Set up the Use (On or Off) of the panic recording function and overwriting option of the recording folder (On or Off). When using the panic recording function and overwriting option, RASplus continues recording when the hard disk drive is full by overwriting the oldest video. Designate a recording folder path and set the recording folder size from 640MB to 2,048MB. **Capacity** shows the remaining space of the recording folder.


NOTE: The recording folder size cannot be changed once it has been set. Designate another recording folder path if you want to expand the recording space.

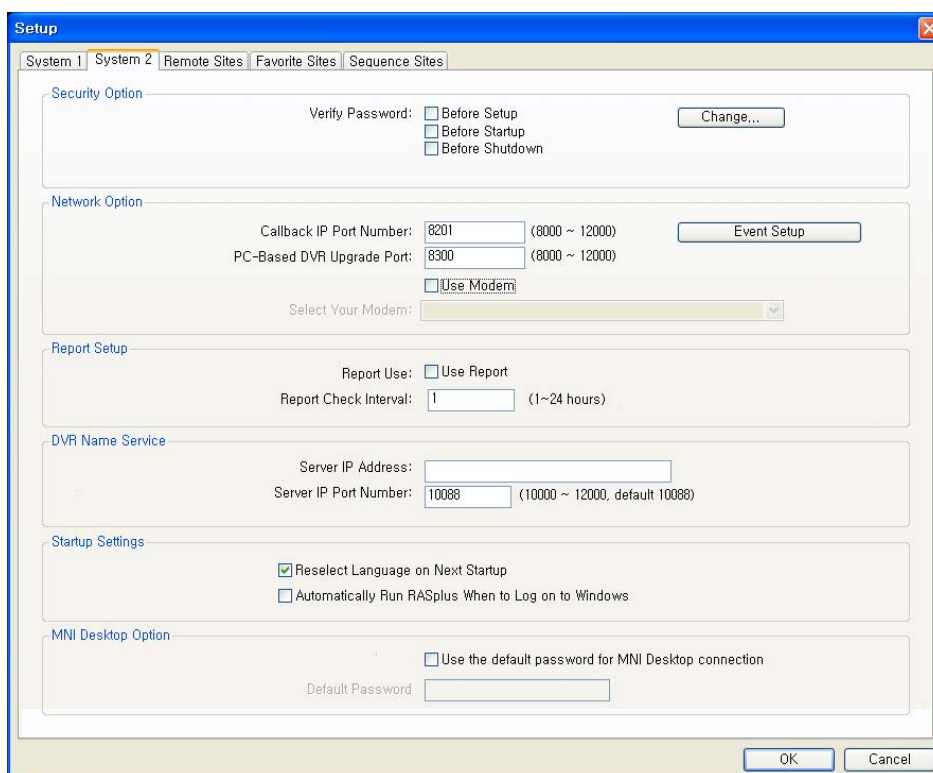
- **Recording Mode Setup...:** Set up the panic recording mode.



- **Visible Watch Camera:** Records camera channels currently displayed on the Watch screen.
- **User Assignment Setup:** Records camera channels assigned by the user on the Watch screen.
- **Camera Range Setup:** Records camera channels within preset channel range. Select the boxes beside Camera and adjust camera range up to 16 channels

NOTE: Panic recording will NOT be made for the cameras currently not displayed on the Watch screen even though they are set up to be recorded.

NOTE: When selecting the User Assignment Setup mode, the user can assign camera channels to record manually on the Watch screen. Select a camera on the Watch screen and click the right mouse button then select *Set Record Camera* in the text menu screen. The gray  icon displays on the selected camera screen.

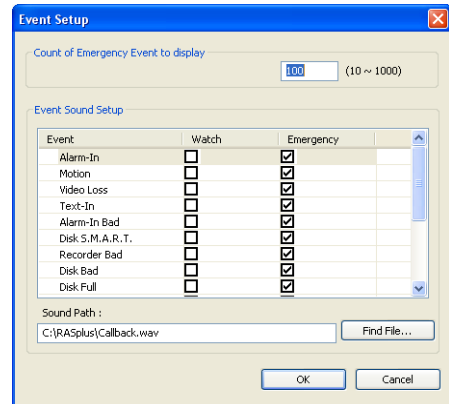


System 2: Set up the modem connection information for remote access, system password, network option, report function and DVRNS server.

- **Security Options:** Designate whether password confirmation is required Before setup, Before startup, or Before shutdown of RASplus. Click the **Change** button to change the password.
- **Network Option:** Set up the IP port number (from 8000 to 12000) that is used for network connection when receiving a callback message from a remote site, and the upgrade port number that is used for upgrading the PC-based DVR. Select **Use modem** if you want to use a modem for remote access.

NOTE: The IP port and upgrade port numbers you enter should match the values set during the network setup of the remote DVR.

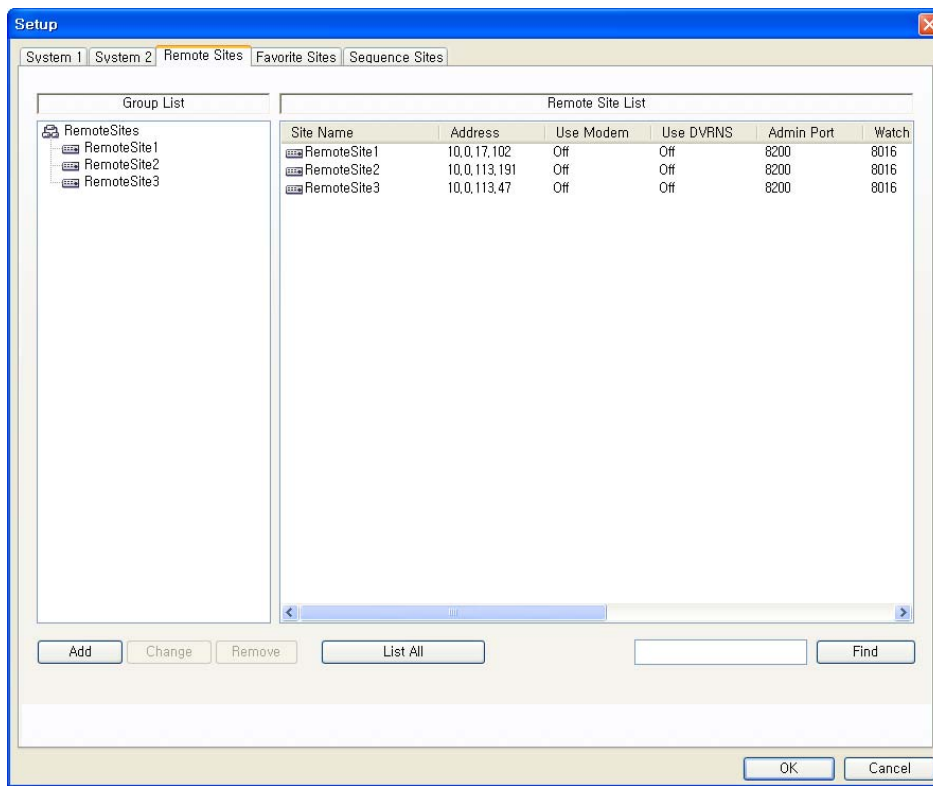
- **Event Setup...**: Enter the number of emergency events displayed in the Emergency Event panel. Set up RASplus to sound when events are detected by selecting events from the list and designating the sound file (.wave) path. You can set up a different sound for each type of event.



- **Report Setup**: Set up the Use (On or Off) and check intervals (from 1 to 24 hours) of the report function. When using the report function, RASplus checks on the remote site based on the user-defined interval and reports system status.
- **DVR Name Service**: Set up the IP address and port number (from 10000 to 12000) of the DVRNS (DVR Name Service) server. The IP address and port number you enter should match the values set during the DVRNS setup of the remote DVR you want to connect to.

NOTE: The DVRNS server cannot be configured when using modem connections. Refer to *Appendix B* for more details on DVR Name Service.

- **Startup Settings**: Select **Reselect Language on Next Startup** to change a language when RASplus starts. Select **Automatically Run RASplus When to Log on to Windows** to run RASplus automatically when logging onto Windows.
- **MNI Desktop Option**: Select **Use the default password for MNI Desktop connection** and enter the password to use the same password for every remote site when connecting to remote sites using the MNI service. In this case, the password registered in the **MNI Desktop Setup** setting during the remote site registration will not be used. This setting will be used when every remote site uses the same password for the MNI remote connection.



Remote Site: Configures the connection list for remote access.

- **Add:** Click the Add button and enter the information about the remote site you want to add.

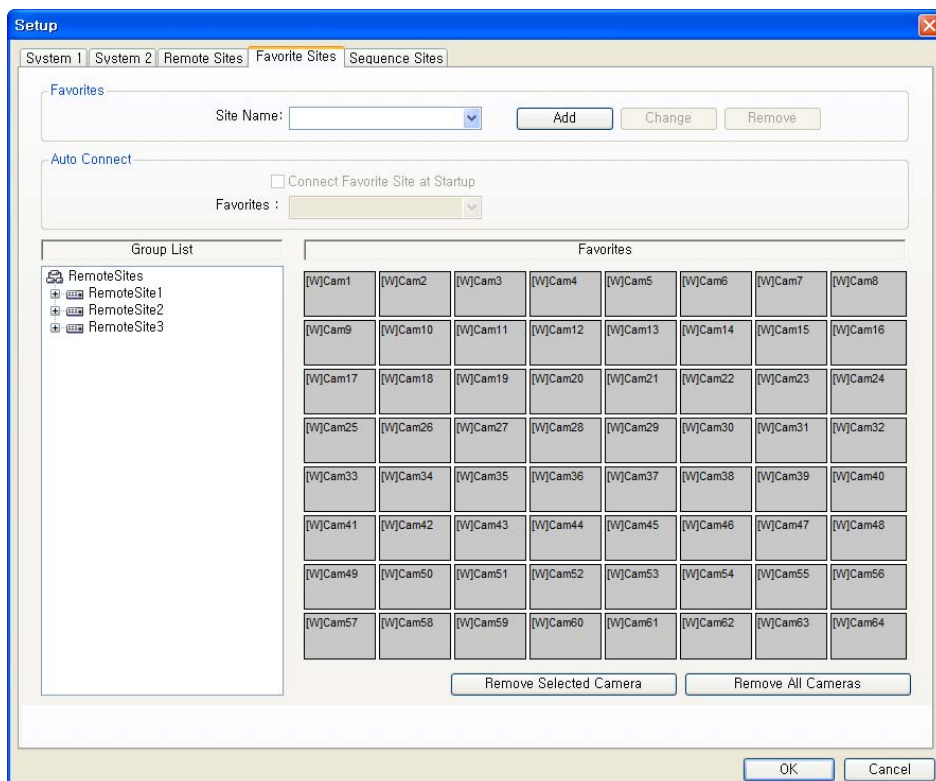
- **Reference Group:** The site should be assigned to a **Reference Group** for effective management of multiple remote sites. Click the Add button to create a new reference group.
- **Device Setup:** Select the system of the remote site to register. When registering an IP camera, select **IP Camera**.
- **Remote Site Setup:** Select **PC Based DVR** when registering a DVR at the remote site that is PC based. Enter a site name and the IP address of the remote site (modem telephone number for dial-up connections), acquired from your network administrator. Click the **Port...** button to set up the IP port number of each program. The IP port number should match the value set during the network setup of the remote DVR. If the remote system version does not allow you to set the IP port numbers, use the following values: “8200” for Admin, “8016” for Watch, “10019” for Search, and “8116” (“8115” for a PC-based DVR) for Audio. Select the number of cameras at the remote site. For example, selecting “8” from the list when registering a 16-channel DVR displays video of the first 8 channels on the screen.

NOTE: If the DVR uses the DVRNS function, place a checkmark in the *Use DVRNS* box. The *IP Address* field will be changed to *DVR Name*, and you can enter the name of remote site registered on the DVRNS server. The DVR name you enter should match the name set during the DVRNS setup on the remote DVR.

- **Login Setup:** Enter the user ID and password. The user ID and password you enter should match the user ID and password used to log on to the DVR. If you have entered a user ID and a password, the site will be connected automatically without a dialog box requesting a password. Select **No Password** for remote systems that do not require a password (e.g., guest login).

NOTE: Up to 32 characters may be used for the site names.

- **MNI Desktop Setup:** Enter the port number and password set in the remote DVR for the MNI remote connection. Refer to **3.2 Panel – Remote Sites Panel** for details about the MNI remote connection. If it is set up to use the same password for every remote site, you cannot enter the password here. Refer to **System 2 – MNI Desktop Option** for details about using the same password.
- **Emergency Event Instruction:** Enter the message to display when emergency events are called in from the remote site. The Emergency Event Instruction can be checked by clicking the right mouse button after selecting the event or the site from the list in the Emergency Event panel.
- **Change:** Select the group or site you want to change and click the **Change** button, or double click the group or the site to change. Then, edit the site information.
- **Remove:** Select the group or site you want to remove and click the **Remove** button.
- **List All:** Displays all registered remote sites.
- **Find:** Enter the group name or site name to search for and click the **Find** button to display the matching groups or sites in the list.




Favorite Site: The Favorite Site is a user-defined connection list that combines more than one remote site, so multiple sites can be monitored at the same time with a single connection. Add a new Favorite Site and define it by dragging and dropping sites and/or cameras to the Favorites map. Up to 64 cameras can be monitored at a time when each camera is assigned to its own position on the Favorites map.

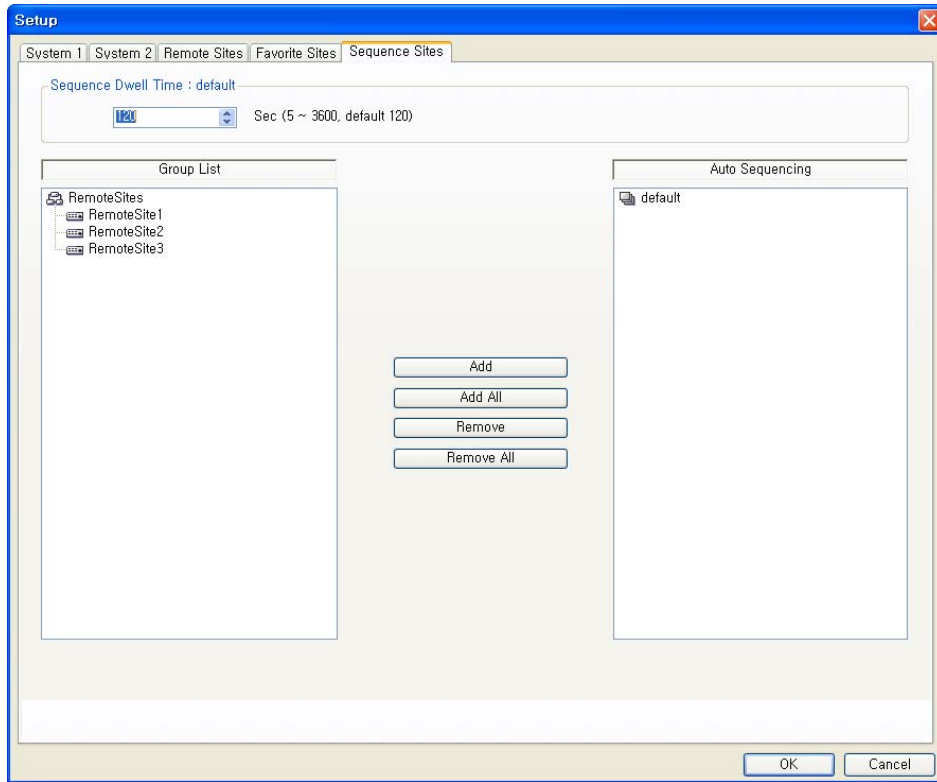
- **Favorites**
 - **Site Name:** Select a registered Favorite site from the drop-down list.
 - **ADD:** Adds a new Favorite site. Clicking the button displays the **Favorites** dialog box. Enter the name of the Favorite site to add, and Select the desired screen layout used when the Favorite site is connected.
 - **Change:** Select the Favorite site to change from the Site Name list and click the **Change** button. Then change the site name.
 - **Remove:** Select the Favorite site to remove from the Site Name list and click the **Remove** button.
- **Connect Favorite Site at startup:** Select whether or not your favorite site is automatically connected when RASplus starts.
- **Remove Selected Camera:** Removes selected cameras from the Favorites map. Cameras can also be removed by clicking the right mouse button after selecting the camera.
- **Remove All Cameras:** Removes all cameras from the Favorites map.

NOTE: Cameras can be selected by clicking the left mouse button on the camera in the Favorites map. Selected cameras will be outlined in red. Clicking the left mouse button on the camera while holding the **Ctrl** key toggles camera selection On and Off. Multiple cameras can be selected by clicking the left mouse button while holding the **Shift** key.

NOTE: “[W]” (Watch Screen) and “[S]” (Search Screen) displayed to the left of the camera number indicates the display option of each camera. The display option can be selected when registering a Favorite site. Selecting the remote site from the Group List and dragging and dropping it to the Favorites map using the right or left mouse buttons (This is user-defined and must be set during System setup) displays the text menu screen. Select the desired display option between *Watch Screen* and *Search screen*. If you do not select the display option, Watch Screen display will be assigned to all cameras of the registered Favorite site by default.

NOTE: Clicking the  button on the toolbar will save the current screen layout of the Watch screen or Search screen directly to the Favorite site.



NOTE: The Favorite Site list does not work with modem connections.



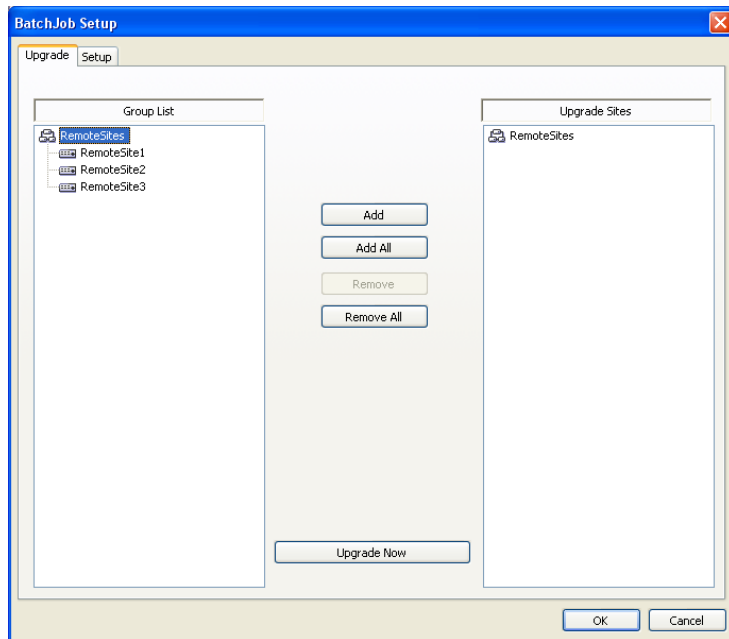
Sequence Site: Configure the sequence site. RASplus connects to the registered sites sequentially allowing connection to more than one remote site. Register an Auto Sequencing group and add desired sites in the Group List to the Auto Sequencing group. Video from the sites added to the Auto Sequencing group is displayed on the screen in the preset sequence interval during the sequence monitoring.

- **Sequence dwell time:** Displays the preset sequence intervals (from 5 seconds to 1 hour) for each connection to the sites registered in the Auto Sequencing group. You also can change the preset sequence interval.
- **Auto Sequencing:** Displays the list of registered Auto Sequencing groups. You can add a new group (max. 20), change the Auto Sequencing settings of a group or delete the group by using the popup menu displayed by selecting the Auto Sequencing group and clicking the right mouse button.
- **Add:** Select the site to add from the Group List and click the **Add** button. Select an Auto Sequencing group to add the site from the popup menu displayed by clicking the button.
- **Add All:** Adds all sites in the Group List to the Auto Sequencing list. Select an Auto Sequencing group to add all sites from the popup menu displayed by clicking the button.
- **Remove:** Select the site to remove from the Auto Sequencing list and click the **Remove** button.
- **Remove All:** Removes all sites in the Auto Sequencing list.

NOTE: The Auto Sequencing list is not valid with modem connections.

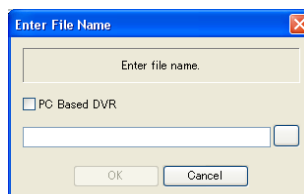
- **Load Setup File:** Allows applying the settings of the **System – Setup** menu saved as an .xml file format to the RASplus system. Loading the setup file can also be performed by clicking the  button on the toolbar.
- **Save Setup File:** Allows saving the current settings of the **System – Setup** menu as an .xml file format. If you select specific remote sites, it only saves the settings for the selected remote sites. Saving the setup file can also be performed by clicking the  button on the toolbar.

- **Batch Job Setup:** Allows upgrading or setting up multiple remote DVRs using the Batch Job Setup screen.

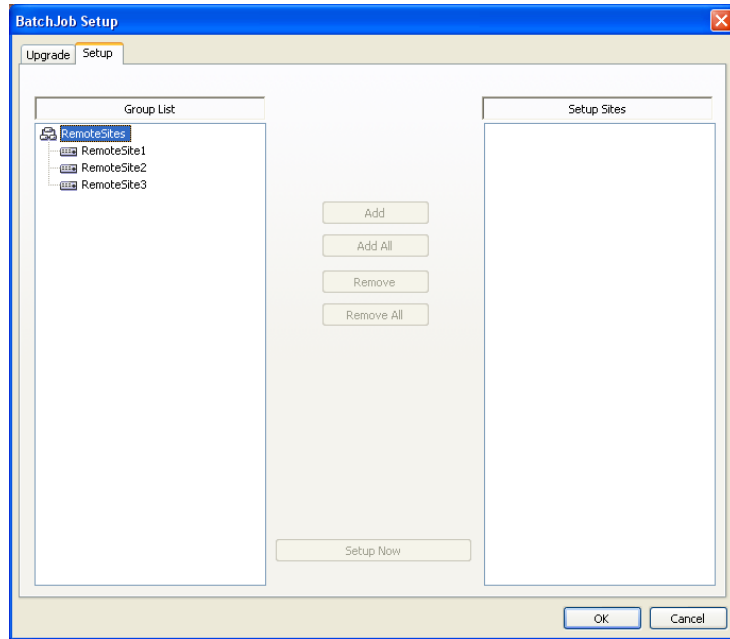


Upgrade: Sets up the remote upgrade job for remote sites. First, select the remote sites to upgrade from the Group List, and add them to the Upgrade Sites list by clicking the **Add** button. Then, click the **Upgrade Now** button to initiate the remote upgrade job for listed Upgrade Sites.

- **Add:** Select the site to add from the Group List and click the **Add** button.
- **Add All:** Adds all sites in the Group List to the Upgrade Sites list.
- **Remove:** Select the site to remove from the Upgrade Sites list and click the **Remove** button.
- **Remove All:** Removes all sites in the Upgrade Sites list.
- **Upgrade Now:** Upgrades the software on the Upgrade Sites.



NOTE: When upgrading a PC-based DVR, select *PC Based DVR* and then select the desired upgrade folder.




Setup: Imports saved settings from a remote DVR to the remote DVR. First, select the remote sites to set up from the Group List, and add them to the Setup Sites list by clicking the **Add** button. Then, click the **Setup Now** button to initiate the remote setup job for Setup Sites.

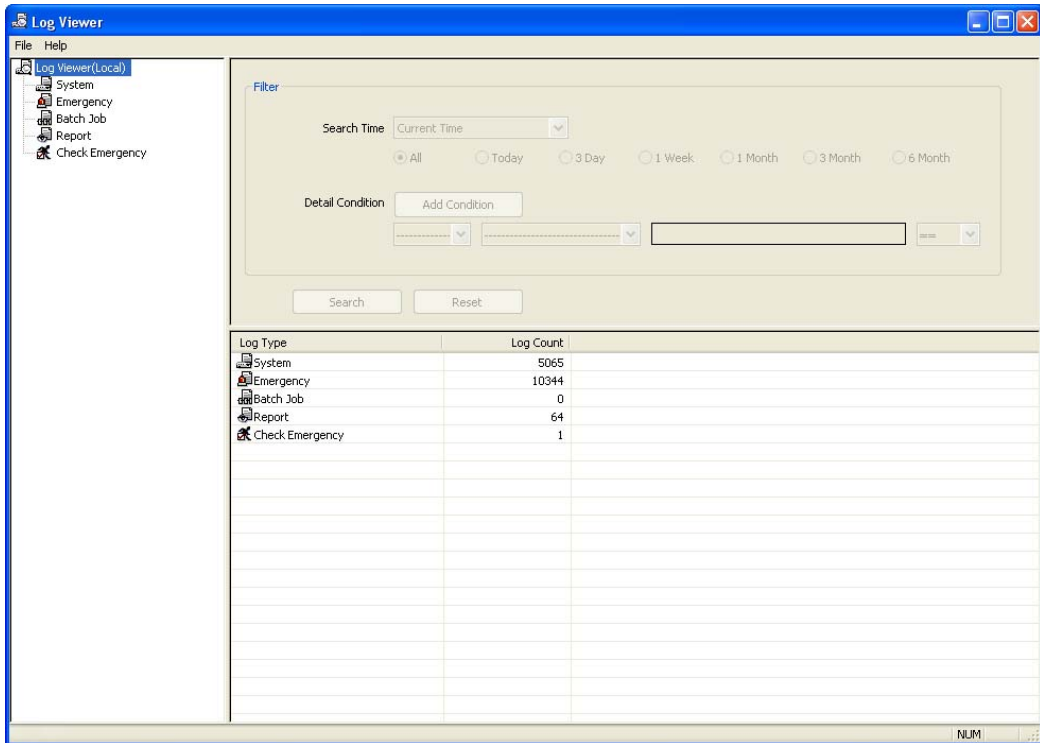
- **Add:** Select the site to add from the Group List and click the **Add** button.
- **Add All:** Adds all sites in the Group List to the Setup Sites list.
- **Remove:** Select the site to remove from the Setup Sites list and click the **Remove** button.
- **Remove All:** Removes the site from the Setup Sites list.
- **Setup Now:** Clicking the button and selecting a setup file applies the settings to the remote DVR in the Setup Sites list.

NOTE: When importing saved settings to more than one remote DVR, network settings will not be imported; this feature may not be supported, depending on the specifications and version of the remote DVR.

NOTE: This feature is **NOT** supported for PC-based DVRs.

- **Disconnect:** Disconnects all current connections. Disconnection can also be performed by clicking the  button on the toolbar.
- **View Log:** Displays log information saved in the RASplus system.

NOTE: You can also display the Log Viewer screen by selecting **Log Viewer** from the RASplus options under the **Start** menu in Windows.



View Log: Displays the type of log and the number of log entries of RASplus. Selecting a log type from the list displays all entries of the selected log type, and you can search for the desired log by setting up a search filter.

- **Filter:** Set up the search condition of the selected log type.
 - **Search Time:** Set up the time range to search within. Selecting **Current Time** and the desired period searches for logs from the current time and as far back as the selected time span. Selecting **Detail Time** allows you to set up a specific starting and ending time to search within.
 - **Detail Condition:** Set up the desired search parameters. Select a filter target from the second list, and select a filter from the third list (enter a filter in the text box). Then select a comparison operator from the last list; **Equal** to search for logs that satisfy the condition (case sensitive), **Not Equal** to search for logs excluding logs that satisfy the condition, **Like** to search for logs that include the entered keyword or **Not Like** to search for logs that do not include the entered keyword. Clicking the **Add Condition** button allows you to add more search conditions. Selecting **AND** searches for logs satisfying all conditions. Selecting **OR** searches for logs satisfying at least one of the conditions.
- **Search:** Displays log entries satisfying the preset search filter.
- **Reset:** Resets the search filter.

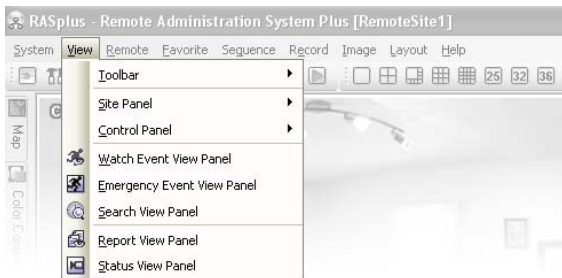
File



- **Log File Open:** Opens a log file (.db).
- **Delete Log:** Deletes logs older than a certain age.
- **Save As...:** Saves the log information in the list as a text (.txt) or CSV (.csv) file.
- **Print:** Prints the log information.
- **Close:** Closes the Log Viewer screen.

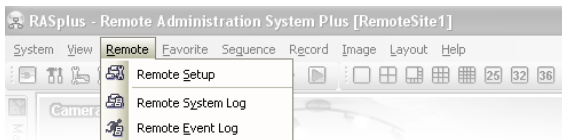
► **Exit:** Disconnects all current connections and exits RASplus program.

View Menu



Displays or closes the toolbar and panels.

Remote Menu

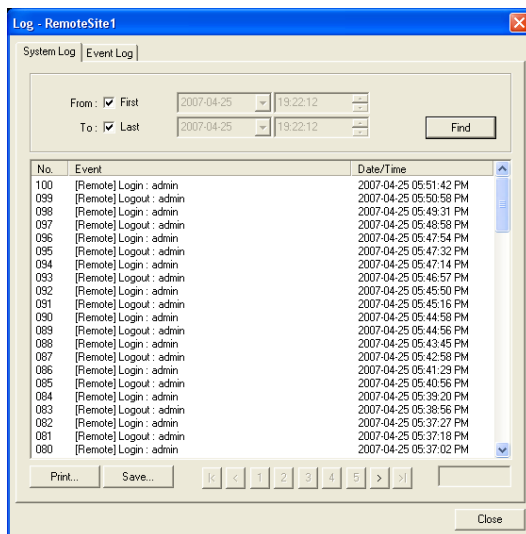


NOTE: The Remote menu can also be activated by clicking the right mouse button after selecting the remote site on the Remote Sites panel.

- **Remote Setup:** Remote Setup can be used to change the setup of a remote DVR. Select the remote site on the Remote Sites panel, initiate the Remote Setup menu, and the setup screen displays.

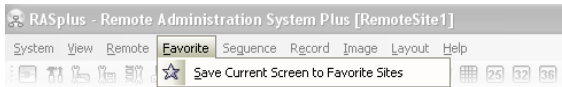
NOTE: Refer to the user manual for the remote DVR for more details on system setup.

- **Remote System Log/Remote Event Log:** These selections display the system log and event log information of a remote DVR. Set the time range of interest and click the Find button. The log entries within the time range displays in the list. 100 results can be displayed in a single page. Click the Move buttons to display additional results.



- **From:** Adjust the search starting date and time. When **First** is selected, it will search from the first logged item.
- **To:** Adjust the search ending date and time. When **Last** is selected, it will search to the last log.
- **Find:** Displays remote log entries within the selected period.
- **Print...:** Prints the log information.
- **Save...:** Saves the log information as a text or CSV file (UTF-8 encoded).
- **Move Buttons:** Moves to the first page (First), previous page (Previous), next page (Next) or last page (Last). You can go directly to a log page by clicking the page number button.
- **Close:** Closes the Log dialog box.

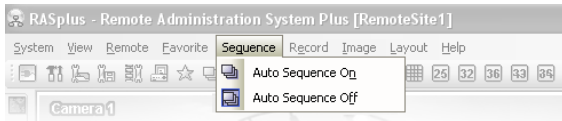
Favorite Menu



NOTE: The Favorite menu can also be accessed using the toolbar controls.

Saves the current screen layout directly to the Favorite site.

Sequence Menu



NOTE: The Sequence menu can also be accessed using the toolbar controls.

Starts or ends auto sequencing (Watch Screen only). Clicking Auto Sequencing On allows you to select a desired Auto Sequencing group.

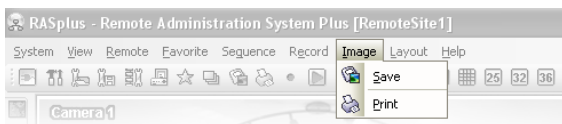
Record Menu



NOTE: The Record menu can also be accessed using the toolbar controls.

Starts or ends panic recording. Selecting Record Play initiates the RecordPlayer program and plays recorded video. Refer to 4.4 *Panic Recording* for more details.

Image Menu



NOTE: The Image menu can also be accessed using the toolbar controls.

- Save: Saves the current image as a bitmap (.bmp) or JPEG (.jpg) file.
- Print: Prints the current image.

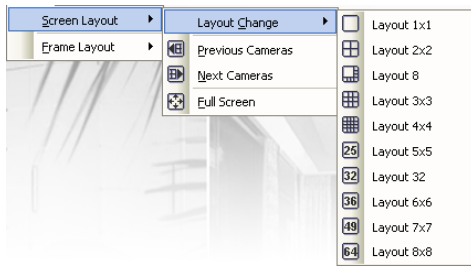
NOTE: Refer to 4.3 *Additional Functions* for more details.

Layout Menu



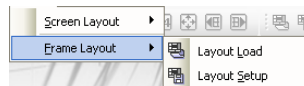
NOTE: The Layout menu can also be accessed using the toolbar controls.

► Screen Layout

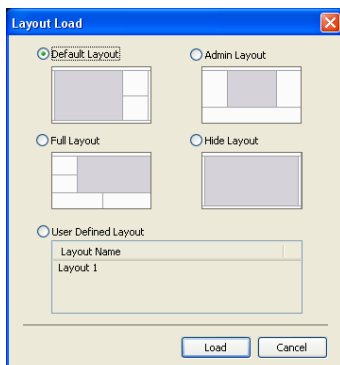


Select the desired screen layout using the layout toolbar. When changing the screen layout, the selected camera on the current screen will be located in the first cell of the new layout. When in one of the multi-view formats, selecting **Previous Cameras** or **Next Cameras** will move to the previous or next page. In other words, when viewing Cameras 1 to 4 in the quad format, selecting **Previous Cameras** will display Cameras 61 to 64 and selecting **Next Cameras** will display Cameras 5 to 8. Selecting **Full Screen** enters the full-screen mode. To return to the previous screen mode, press the Esc key on the keyboard or select **FullScreen Close (x)** from the popup menu displayed by clicking the right mouse button.

► Frame Layout

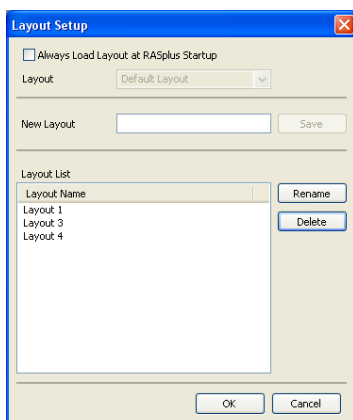


- **Layout Load:** Select the desired frame layout and click the **Load** button to apply the selected frame layout to RASplus.



- **Default Layout:** Displays the panels that are used most frequently in the Watch and Search screen modes.
- **Admin Layout:** Displays only the panels that are used most frequently in the Admin screen mode.
- **Full Layout:** Displays all the panels.
- **Hide Layout:** Hides all panels and displays only the screen.
- **User Defined Layout:** Displays the user-defined layout.

- **Layout Setup:** The user can configure the frame layout by displaying panels on the screen where they are most convenient. Set up the user-defined frame layout.



- **Always Load Layout at RASplus Startup:** Select whether or not the selected frame layout loads automatically when RASplus starts.
- **Save:** Enter a layout name and click the **Save** button to save the current frame layout as a new user-defined layout.
- **Rename:** Select the layout to change from the Layout List and click the **Rename** button. Then change the layout name.
- **Delete:** Select the layout to delete from the Layout List and click the **Delete** button.

NOTE: Up to 10 user-defined layouts can be saved.

Help Menu

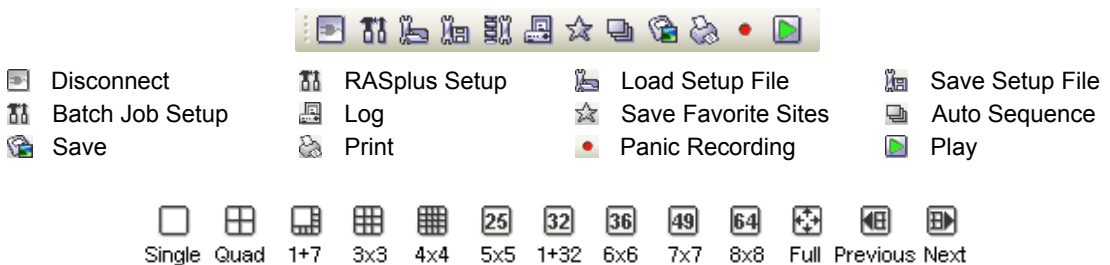
Displays RASplus version information.

3.4 Toolbar

The Toolbar allows convenient access to desired functions.



The controls on the toolbar perform functions as described below:



Select the desired screen layout using the layout toolbar. When changing the screen layout, the selected camera on the current screen will be located in the first cell of the new layout. When in one of the multi-view formats, clicking the or button will move to the previous or next page.





Clicking (Layout Load) will apply the selected frame layout to RASplus, and clicking (Layout Setup) allows you to set up the user-defined frame layout.

Chapter 4 – Operation

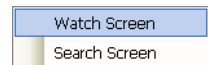
4.1 Live Monitoring

RASplus provides remote monitoring functions for viewing video images in real time from either a single site or multiple sites. In addition, when events are detected at a remote site while in the live monitoring mode, RASplus displays the event information on the Watch Event View panel. In order to perform live monitoring, the display option must be set to **Watch Screen** or **Watch and Search Screen** during System setup.

To connect a remote site on the Watch screen, select the site or camera you want to connect to in the Remote Sites, Favorite Sites or Map panel and then drag and drop it in the desired position on the screen. The  icon will be displayed on each Watch screen. To disconnect the current connection, select the site or camera in the Remote Sites, Favorite Sites or Map panel or on the screen and then click the  button on the toolbar or select **Disconnect** from the System drop-down menu.



NOTE: Some DVR models will only transmit images to the RASplus system while recording video.



NOTE: When selecting the display option of **Watch and Search Screen** during System setup, the remote site can also be set to connect using the right or left mouse buttons (This is user-defined and must be set during System setup). Select **Watch Screen** to connect to the selected site on the Watch screen when the text menu screen appears.



Screen Layout and Frame Layout




RASplus provides multiple screen layout options. The formats available are single-screen, quad, 1+7, 3x3, 4x4, 5x5, 1+32, 6x6, 7x7, 8x8 and full-screen. When in one of the multi-view formats, clicking the  or  button will move to the previous or next page. To view a specific image in the single-screen mode, move the cursor to that image and double click the left mouse button. To return to the previous screen mode from the single-screen mode, double click the left mouse button in the monitoring window.






Clicking  (Layout Load) will apply the selected frame layout to RASplus, and clicking  (Layout Setup) allows you to set up the user-defined frame layout.


Audio Communication

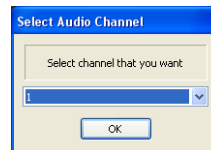
RASplus supports audio communication between the RASplus system and the remote site equipped with two-way audio. If you want to enable audio communication with the remote site, select any camera of the remote site on the screen and click the right mouse button. Selecting **Enable Audio** from the menu displays the following audio control panel.

NOTE: The  icon will display on each camera screen when audio communication is available between the RASplus system and the remote site.




If you want to send audio to the selected remote site, click the  button and talk into the microphone. If you want to monitor live audio from the selected remote site through the attached speaker, click the  button. Clicking both  button and  button allows two-way communication. Clicking the  button disables audio communication.

If the remote DVR allows you to select an audio channel to monitor from the RASplus system, clicking the  button displays the following Select Audio Channel dialog box. Select a camera channel associated with an audio channel to monitor and click the OK button.



Sequence Monitoring


Clicking the  button on the toolbar and selecting a desired Auto Sequencing group connects to the registered sites sequentially allowing connection to more than one remote site and displays images from selected cameras. Clicking the button during sequence monitoring releases sequence monitoring and maintains the current connection. For sequence monitoring to function, the sequence sites should be registered during System setup. Refer to 3.3 *Menu – System Menu* for details on configuring the sequence site.

NOTE: While in the sequence monitoring mode, you cannot manually connect to sites by dragging and dropping with the mouse.

Color Control



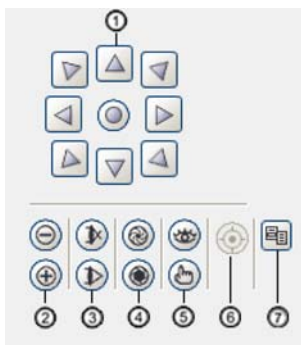
- ① Brightness ② Contrast ③ Saturation ④ Hue ⑤ Undo

Adjust the brightness, contrast, saturation and hue of live video for each camera by clicking the target icons on the Color Control panel. Clicking the  icon cancels the image processing operation and reloads the original image. Only the users authorized for color control can adjust the image at RASplus.


NOTE: It is important that cameras are properly adjusted. These adjustments cannot make up for improperly adjusted cameras when the images are recorded.

NOTE: Not all DVRs support the color control at RASplus. Refer to the user manual of the DVR.

PTZ Control



- ① Move buttons ② Zoom Out/In
③ Focus Near/Far ④ Iris Close/Open
⑤ View Preset/Set Preset ⑥ Auto Focus
⑦ Advanced Menu

Select a PTZ camera at the remote site, and control pan, tilt and zoom. Only the users authorized for PTZ control can control PTZ at RASplus. The  icon will display on each camera screen when PTZ can be controlled remotely.

NOTE: Control features of the Advanced menu will be enabled when a camera connected to a DVR supports PTZ features such as Speed, Auto Pan, Tour, etc. and the DVR supports remote PTZ control. Depending on the specifications of the PTZ camera, some features of the Advanced menu may not be active.

NOTE: Clicking the  (Device Menu) button functions the same as when selecting the *Device menu* feature of the Advanced menu.

NOTE: When the camera is moved or is zoomed in or out, clicking the  (Auto Focus) button adjusts the focus automatically (some models of Network Camera connection only).

NOTE: Using the mouse for PTZ control is supported. Click the left mouse button on the image and move that image in the direction you want to by dragging the mouse. Use the mouse wheel to zoom in and out.

NOTE: Not all DVRs support the PTZ control at RASplus. Refer to the user manual of the DVR.

Alarm Out Control





Control alarm out devices or beep on the remote DVRs by clicking the ON or OFF buttons. Only the users authorized for alarm out control can control an alarm out at RASplus.

NOTE: Not all DVRs support the alarm out control at RASplus. Refer to the user manual of the DVR.

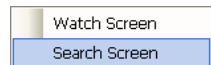
4.2 Playback and Search

RASplus allows you to play back and search recorded images on remote DVRs. It also provides additional functions including zoom, various image enhancements, image saving and image printing. To use remote playback and search functions, the display option must be set to of Search Screen or Watch and Search Screen during System setup.

To connect a remote site on the Search screen, select the site or camera you want to connect to in the Remote Site or Favorite Sites panel and then drag and drop it in the desired position on the screen. The  icon will be displayed on each Search screen. The remote site connection on the Search screen will automatically be disconnected if there is no activity for a specified amount of time. Click the  button on the toolbar or select Disconnect from the System drop-down menu to disconnect the current connection manually.

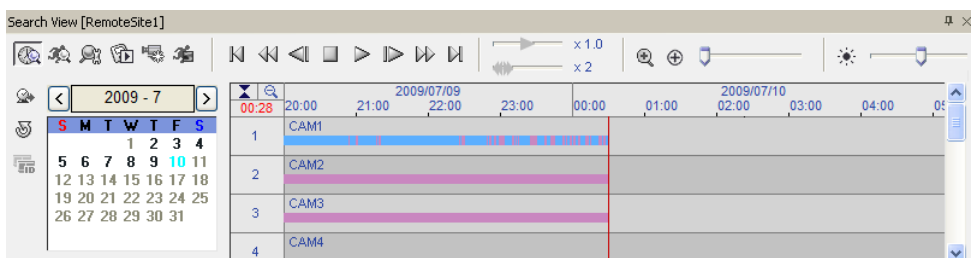
NOTE: Connecting to a Favorite site will be available if the **Search Screen** display option was set up to connect to selected Favorite sites. Refer to 3.3 Menu – System Menu for more details on Favorite Site setup.

NOTE: When selecting the display option of **Watch and Search Screen** during System setup, the remote site can be also be set to connect using the right or left mouse buttons (This is user-defined and must be set during System setup). Select **Search Screen** to connect to the selected site on the Search screen when the text menu screen appears.



It is possible to display cameras in both the Watch Screen mode (live view) and Search Screen mode at the same time. For example, you can connect to a remote DVR site with nine cameras. Drag and drop the site into the first frame on the viewing screen and select Watch Screen. Live video will display in the first nine frames on the screen. Then, drag and drop the site into the 10th frame on the viewing screen and select Search Screen. You will be able to view any video recorded on the remote DVR in frames 10 through 18.

Search View Panel



The Search View panel consists of playback and search controls, time-lapse search table, and event search table.

The playback buttons on the Search View panel perform the following functions as described below:

	Go to the First Image		Fast Backward Play		Go to the Previous Image
	Stop		Play		Go to the Next Image
	Fast Forward Play		Go to the Last Image		

NOTE: The speed of fast forward depends on network bandwidth and the number of images per second recorded.

You can control the playback speed of images that are currently being played back by using the x 1.0 control slider. You can control the fast forward or fast backward playback speed of images that are currently being played back fast forward or fast backward by using the x 2 control slider.

You can display the selected image on the screen in its original size by clicking the button. Clicking the button again displays the image in the preset aspect ratio. You can enlarge a specific part of the image up to five times using the control slider. The user can electronically pan and tilt within the enlarged image by dragging the image using the mouse. Click the left mouse button on the enlarged image and drag to move its position. Clicking the button cancels the enlargement and resets the image. You can change the brightness of the current image using the control slider. Clicking the button cancels the brightness changes and resets the image.

NOTE: Zoom in/out and brightness control work only while in the pause mode.

Search Mode

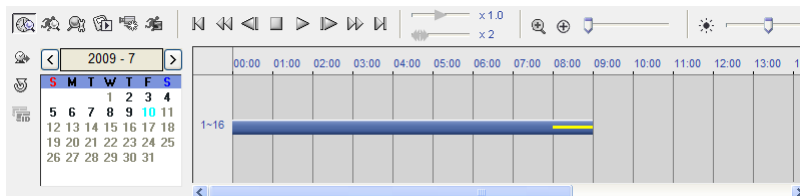
RASplus supports two search modes: time-lapse mode and event mode. The time-lapse search mode searches for recorded data by time and then plays back images found within the time parameters. The event search mode searches for event log entries using specific conditions and plays back the images associated with those event entries. These two modes have different panel configurations and search methods.


NOTE: Using both search modes at the same time is NOT possible.

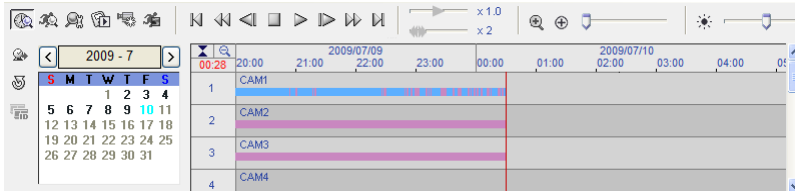
► Time-Lapse Search

Click the button on the Search View panel to enter the time-lapse search mode. Selecting a date from the calendar initiates the time-lapse search. The dates for which recorded images are available are enabled. When first entering the time-lapse search, the latest date with recorded images will be selected (highlighted) in the calendar. Click the (Reload) button to reload the date information. Recorded information available from the selected date will be displayed on the timetable. The recorded data are displayed by time and bar-shaped segments indicate there are recorded data during that time. Select a specific hour by clicking the mouse on the desired hour segment.

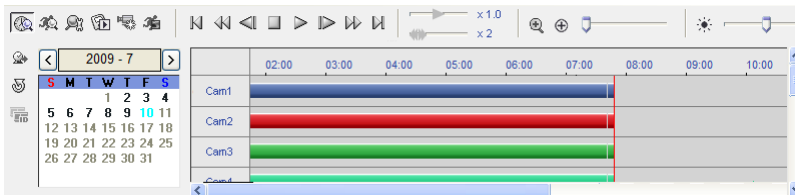
NOTE: The timetable of the time-lapse search panel will differ depending on the model of remote DVR that is connected to RASplus.



The recorded data of all camera channels are displayed by time in one-hour segments and a yellow-highlighted segment indicates the selected time that will be played back. Select a specific hour by clicking the mouse on the desired hour segment, and video images will be played back starting with the first image captured within the one-hour segment. If the remote DVR's time and date have been reset to a time that is earlier than some recorded video, it is possible for the DVR to have more than one video segment in the same time range. Click the  (Segment) button and select the video segment you want to search. The active segment will be highlighted with pink, and the inactive segment will be highlighted with gray on the timetable.



The recorded data of each camera channel are displayed by time in one-minute segments and a red vertical line indicates the selected time that will be played back. The color of the bar indicates different types of recording: Yellow for Pre-event, Purple for Event, Red for Panic, Orange for Irregular recording caused by temporary disconnection from the device and Blue for Time-lapse. The supported types of recording are different depending on the specifications and version of the remote DVR. If the DVR has more than one video segment in the same time range, each segment will be separated by a yellow vertical line.



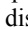


When searching video recorded on a PC-based DVR, the recorded data of each camera channel are displayed by time in one-minute segments. The color of the bar indicates different types of recording: Yellow for Pre-event, Cyan for Motion Detection, Lime for Object Detection, Purple for Video Loss, Brown for Video On, Red for Sensor, Gray for Text-in, and Blue for Time-lapse.

To view an image from a specific time, click the  (Go To) button and set up the date and time to search.

► Event Search

Site	Event	Date/Time
RemoteSite1	CAM9	08-30-2006 21:32:59
RemoteSite1	CAM9	08-30-2006 21:32:56
RemoteSite1	CAM9	08-30-2006 21:32:50
RemoteSite1	CAM9	08-30-2006 21:32:46
RemoteSite1	CAM9	08-30-2006 21:32:43
RemoteSite1	CAM2	08-30-2006 21:32:39
RemoteSite1	CAM8	08-30-2006 21:32:37

Click the  button on the Search View panel to enter the event search mode. First, click the  button, and set up the search condition in the following Event Search dialog box. Set up the search criteria for the event search in the Event Search dialog box, and click the Find button. The results will be displayed in the event list. A total of 100 results can be displayed at a time. Click the  (Query Next) button to display the next results. If you select an event in the list, the recorded data associated with that event will be displayed on the screen. The images may be played back using the playback buttons.

Event Search

Event | Text-In

From : ☒ First 2010-12-21 2:49:16

To : ☒ Last 2010-12-21 2:49:16

	All	1	2	3	4	5	6	7	8	9	10	11	12	13	14	15	16
Alarm-In:	<input checked="" type="checkbox"/>	<input checked="" type="checkbox"/>	<input checked="" type="checkbox"/>	<input checked="" type="checkbox"/>	<input checked="" type="checkbox"/>	<input checked="" type="checkbox"/>	<input checked="" type="checkbox"/>	<input checked="" type="checkbox"/>	<input checked="" type="checkbox"/>	<input checked="" type="checkbox"/>	<input checked="" type="checkbox"/>	<input checked="" type="checkbox"/>	<input checked="" type="checkbox"/>	<input checked="" type="checkbox"/>	<input checked="" type="checkbox"/>	<input checked="" type="checkbox"/>	<input checked="" type="checkbox"/>
Motion:	<input checked="" type="checkbox"/>	<input checked="" type="checkbox"/>	<input checked="" type="checkbox"/>	<input checked="" type="checkbox"/>	<input checked="" type="checkbox"/>	<input checked="" type="checkbox"/>	<input checked="" type="checkbox"/>	<input checked="" type="checkbox"/>	<input checked="" type="checkbox"/>	<input checked="" type="checkbox"/>	<input checked="" type="checkbox"/>	<input checked="" type="checkbox"/>	<input checked="" type="checkbox"/>	<input checked="" type="checkbox"/>	<input checked="" type="checkbox"/>	<input checked="" type="checkbox"/>	<input checked="" type="checkbox"/>
Object Detection:	<input checked="" type="checkbox"/>	<input checked="" type="checkbox"/>	<input checked="" type="checkbox"/>	<input checked="" type="checkbox"/>	<input checked="" type="checkbox"/>	<input checked="" type="checkbox"/>	<input checked="" type="checkbox"/>	<input checked="" type="checkbox"/>	<input checked="" type="checkbox"/>	<input checked="" type="checkbox"/>	<input checked="" type="checkbox"/>	<input checked="" type="checkbox"/>	<input checked="" type="checkbox"/>	<input checked="" type="checkbox"/>	<input checked="" type="checkbox"/>	<input checked="" type="checkbox"/>	<input checked="" type="checkbox"/>
Video Loss:	<input checked="" type="checkbox"/>	<input checked="" type="checkbox"/>	<input checked="" type="checkbox"/>	<input checked="" type="checkbox"/>	<input checked="" type="checkbox"/>	<input checked="" type="checkbox"/>	<input checked="" type="checkbox"/>	<input checked="" type="checkbox"/>	<input checked="" type="checkbox"/>	<input checked="" type="checkbox"/>	<input checked="" type="checkbox"/>	<input checked="" type="checkbox"/>	<input checked="" type="checkbox"/>	<input checked="" type="checkbox"/>	<input checked="" type="checkbox"/>	<input checked="" type="checkbox"/>	<input checked="" type="checkbox"/>
Video Blind:	<input checked="" type="checkbox"/>	<input checked="" type="checkbox"/>	<input checked="" type="checkbox"/>	<input checked="" type="checkbox"/>	<input checked="" type="checkbox"/>	<input checked="" type="checkbox"/>	<input checked="" type="checkbox"/>	<input checked="" type="checkbox"/>	<input checked="" type="checkbox"/>	<input checked="" type="checkbox"/>	<input checked="" type="checkbox"/>	<input checked="" type="checkbox"/>	<input checked="" type="checkbox"/>	<input checked="" type="checkbox"/>	<input checked="" type="checkbox"/>	<input checked="" type="checkbox"/>	<input checked="" type="checkbox"/>
Camera:	<input checked="" type="checkbox"/>	<input checked="" type="checkbox"/>	<input checked="" type="checkbox"/>	<input checked="" type="checkbox"/>	<input checked="" type="checkbox"/>	<input checked="" type="checkbox"/>	<input checked="" type="checkbox"/>	<input checked="" type="checkbox"/>	<input checked="" type="checkbox"/>	<input checked="" type="checkbox"/>	<input checked="" type="checkbox"/>	<input checked="" type="checkbox"/>	<input checked="" type="checkbox"/>	<input checked="" type="checkbox"/>	<input checked="" type="checkbox"/>	<input checked="" type="checkbox"/>	<input checked="" type="checkbox"/>
Text-In:	<input checked="" type="checkbox"/>	<input checked="" type="checkbox"/>	<input checked="" type="checkbox"/>	<input checked="" type="checkbox"/>	<input checked="" type="checkbox"/>	<input checked="" type="checkbox"/>	<input checked="" type="checkbox"/>	<input checked="" type="checkbox"/>	<input checked="" type="checkbox"/>	<input checked="" type="checkbox"/>	<input checked="" type="checkbox"/>	<input checked="" type="checkbox"/>	<input checked="" type="checkbox"/>	<input checked="" type="checkbox"/>	<input checked="" type="checkbox"/>	<input checked="" type="checkbox"/>	<input checked="" type="checkbox"/>

☒ Recorder Bad
☒ Alarm-In Bad
☒ Disk Bad
☒ Disk Temperature
☒ Disk S, M, A, R, T.
☒ Panic Record
☒ Disk Almost Full

Find Cancel

Event Search

Event | Text-In

From : ☒ First 2010-12-21 2:49:19

To : ☒ Last 2010-12-21 2:49:19

Channels : ☒ ☒ ☒ ☒ ☒ ☒ ☒ ☒ ☒ ☒ ☒ ☒ ☒ ☒ ☒ ☒ ☒ ☒

Name	Comp.	Value	Column	Line
			0	0
			0	0
			0	0
			0	0
			0	0

Option... Load Save

Find Cancel

NOTE: The Event Search dialog box will differ depending on the specifications of remote DVR.

NOTE: The *Text-In* (Event Search – Text-In tab) search may not be supported, depending on the specifications and version of the remote DVR. Refer to the user manual of the remote DVR for details on the search criteria for the text-in search.

When searching video recorded on a PC-based DVR, you can adjust the event dwell time from 1 second to 10 minutes. If you adjust the event dwell time, RASplus will display the images of first queried event and ignore remaining events occurring during the preset period.

NOTE: When *First* is selected for the search starting time, the search will be from the first recorded data. When *Last* is selected for the search ending time, the search will be to the last recorded data.

Additional Functions

► Searching Data Source

Click the  button on the Search View panel to set up the data source to be searched.

Data Source

☒ Search on Local
☐ Search on Archive
☐ Search on Other

OK Cancel

- **Search on Local:** Searches recorded data on primary storage installed in the remote DVR.
- **Search on Archive:** Searches archived data on backup storage installed in the remote DVR.
- **Search on Other:** Searches recorded or archived data on storage used for another DVR then installed in the selected remote DVR.

NOTE: The *Search on Other* may not be supported, depending on the specifications and version of the remote DVR.

► Screen Layout and Frame Layout



RASplus provides multiple screen layout for playback. The available formats are single-screen, quad, 1+7, 3x3, 4x4, 5x5, 1+32, 6x6, 7x7 and 8x8 and full-screen. When in one of the multi-view formats, clicking the or button will move to the previous or next page. To view a specific image in the single-screen mode, move the cursor to that image and double click the left mouse button. To return to the previous screen mode from the single-screen mode, double click the left mouse button in the playback window.

Clicking (Layout Load) will apply the selected frame layout to RASplus, and clicking (Layout Setup) allows you to set up the user-defined frame layout.

► Image Processing



The Image Processing panel allows enhancing played back images using processing controls.

- Blurs the image.
- Sharpens the image.
- Equalizes the image.
- Reduces the alias effect that occurs when using the zoom function.
- Reloads the original image.

► Playing Recorded Audio

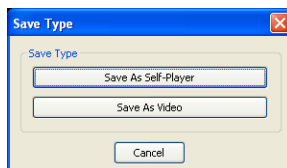
RASplus will play audio when it is in the single-screen layout while playing back recorded video that has recorded audio. Audio playback can be On or Off by selecting **Enable Audio** from the menu displayed by clicking the right mouse button on the screen.

NOTE: Audio might be interrupted during playback because of network conditions and your PC's performance.

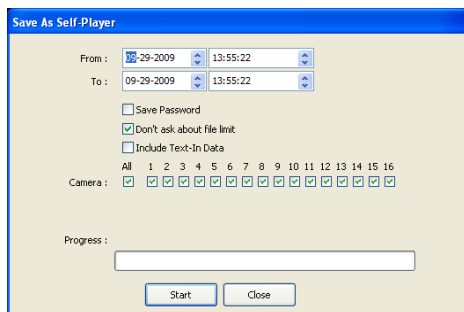
NOTE: Playing recorded audio may not be supported, depending on the specifications of the remote DVR.

► Save

Clicking the button on the Search View panel saves recorded video.




- **Save As Self-Player...**: Saves any video clip of recorded data as an executable file. Set up the save parameters. Click the Start button, and select **Save in**. Enter a **File name** and then select **Save as type (.exe)** for the video you are saving. Then click the Save button.



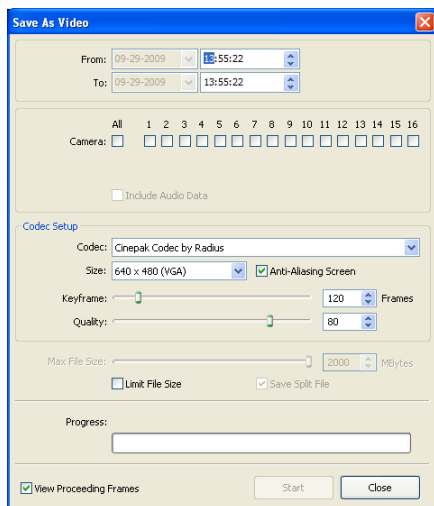
NOTE: When more than one video segment exists in the same time range due to time overlap, a segment selection dialog box will appear and ask you to select the video segment you want to save from the segment list. Refer to the user manual of the remote DVR for details on time overlap.

NOTE: When the data file reaches 2GB, you will be asked to continue saving by creating multiple files in 2GB units. If you do not want to be asked, select *Don't ask about file limit*.

NOTE: If you want to save the recorded data without including the Self-Player program, select *Exclude Player*. If you select this option, the file size will be smaller, and it will take less time to save, but will need to run the Self-Player program which is included on the RASplus installation CD to play the saved file. This feature may not be supported, depending on the specifications and version of the remote DVR.

Save As Self-Player can be performed by using the  button on the Search View panel. Selecting the desired time on the timetable and clicking the button sets the starting date (From), and selecting another time and clicking the button again sets the ending time (To).

- **Save As Video...:** Saves any video clip of recorded data in an AVI (Audio Video Interleaved) file format. Set up the save parameters. Click the **Start** button and then set the file name. Clicking the **Save** button starts saving video.




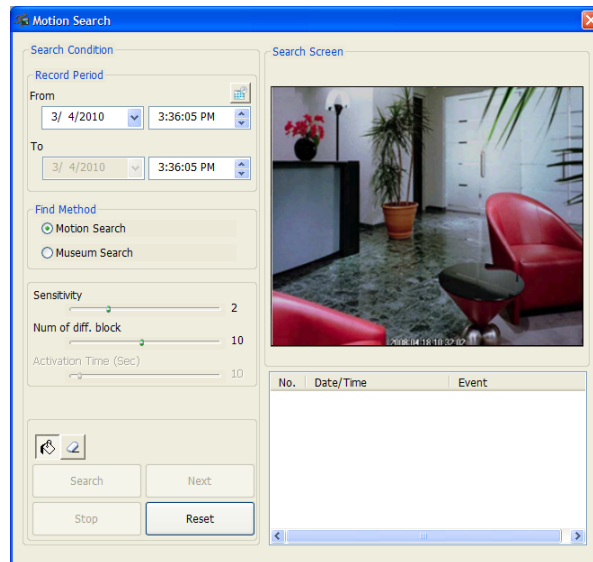
NOTE: Selecting *Include Audio Data* includes audio data when saving video with recorded audio. This option is not available when more than one camera is selected.

NOTE: When the data file reaches 2GB, saving stops. Selecting *Limit File Size* and adjusting the maximum file size causes saving to stop once the data file reaches the maximum file size setting. Selecting *Save Split File* saves video by creating multiple files in 2GB units or in the *Max File Size* units.

NOTE: Selecting *View Proceeding Frames* displays a popup screen showing the video currently being saved.

► Motion Search

Click the  button on the Search View panel to search for motion in the recorded images on remote DVRs.



NOTE: Motion Search is supported only in the single-screen mode.


- **Record Period:** Sets up the record period of images to search.
- **Find Method:** Selects a search method.
 - **Motion Search:** Searches for images with changes in the Detection Area between two consecutive images (for example, when there was movement).
 - **Museum Search:** Searches for images with changes which last for the Activation Time in the Detection Area when compared to the image displayed currently on the Search Screen (for example, when an object disappears).
- **Sensitivity:** Sets the sensitivity of the change detection. The higher the number is, the more sensitive it is.
- **Num of diff. block:** Sets the minimum number of blocks that must be activated to be considered as a change (Motion Search only).
- **Diff. % to ref. image:** Sets the minimum proportion (%) of blocks that must be activated to be considered as a change (Museum Search only).
- **Activation Time:** Sets the duration that the change must last to be considered as a change (Museum Search only). If a change is detected but does not last as long as the Activation Time, the change is not considered as a change.
- **[Save/Print Icon]** (Detection Area Select/Clear): Sets the detection area on the Search Screen by selecting or clearing blocks.
- **Search/Stop:** Starts or stops searching. The last recorded image is displayed on the Search Screen.
- **Next:** Searching stops when the search results reach 100. Clicking the button continues searching.
- **Reset:** Resets the search condition.

4.3 Additional Functions

Save

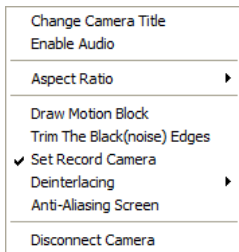
Clicking the  button on the toolbar saves the image currently displayed on the screen as a bitmap or JPEG file. By placing a checkmark in the box beside **Include Image Info**, text information about the site will be included when saving the image.

Print

Clicking the  button on the toolbar prints the image currently displayed on the screen on a printer connected to your computer. By placing a checkmark in the box beside **Include Image Info**, text information about the site will be included when printing the image.

Screen Menu

Selecting a camera on the Watch or Search screen and clicking the right mouse button display the popup menu.


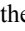


- **Change Camera Title:** Changes the camera name displayed on the screen. Leaving the Camera Title blank causes the camera name set up on the remote site to display. Changing the camera title does not affect the camera name set up on the remote site.
- **Enable Audio:** Enables audio communication with the remote site on the Watch screen (Two-way audio equipped remote sites only). Plays audio while playing back recorded video that has recorded audio on the Search screen. Refer to *4.1 Live Monitoring* and *4.2 Playback and Search* for more details.
- **Aspect Ratio:** Changes the image aspect ratio displayed on each camera screen.
 - **Fit to Screen:** Displays images by fitting them to the screen size.
 - **Original Ratio:** Displays images by fitting them within the screen size while maintaining their original ratio.
 - **Half Size (x0.5) to Quadruple Size (x4):** Select the desired image size. Options are enabled when the selected camera screen can display images in that size.
- **Draw Motion Block:** Displays the area that detects motions with red blocks on the screen. (Network Video Transmitter connection only)
- **Trim The Black(noise) Edges:** Trims the black line (noise) displayed at the edge of the image. (Network Video Transmitter and some models of Network Camera connection only)
- **MultiStream:** Allows you to choose the desired stream if the remote DVR is in the multistream mode for live monitoring.
- **Set Record Camera:** Sets the selected camera channel to be recorded during panic recording. Refer to *3.3 Menu – System Menu* for details on configuring camera channels for panic recording.
- **Deinterlacing:** Enhances image display quality of interlaced video on the screen by eliminating horizontal scan lines or noise in areas with motion.
- **Anti-Aliasing Screen:** Enhances image display quality for all cameras on the screen by eliminating stair-stepping (aliasing) effects in the enlarged image.
- **Disconnect Camera:** Disconnects a camera on the screen.

NOTE: When using a low-end computer, image drawing speed might decrease while using a deinterlace filter depending on the type of deinterlace filter.

NOTE: When using a low-end computer, image drawing speed might decrease when the *Anti-Aliasing Screen* option is selected.

4.4 Panic Recording

Clicking the  button on the toolbar starts panic recording of cameras currently displayed on the Watch screen. Clicking the button again stops panic recording. Up to 16 channels can be recorded at a time, and you can select which cameras are to be recorded during the System setup. Clicking the  button on the toolbar initiates the Record Player program and plays video saved in the recording folder designated during the System setup. The Record Player GUI and its controls are almost identical to the Clip Player. Refer to *Appendix A – Reviewing Video Clips, Clip Player*.

If you want to play back video saved in another recording folder, run the Record Player program first. Move to the Start menu in Windows. Then, select **RecordPlayer** from the RASplus options and select the recording folder path you want.

Recorded video can be saved as a bitmap or as an executable file using the save function of the Record Player.

NOTE: Panic recording will be available only if you select *Use Recording* and it is set up in the recording options during the System setup.

NOTE: The date and time displayed on the Record Player indicates when the recording was made on RASplus.

NOTE: The  icon will display on each screen when panic recording starts.


NOTE: Audio recording is not supported.

4.5 Status View


RASplus provides a status display, remote setup, system log and event log view of the connected remote site in real-time. To display the status of the remote site, select a camera or a site from the Remote Site list and drag it to the Status View panel. You can also select **Connect Status** from the popup menu displayed by clicking the right mouse button after selecting the site from the Remote Site list.




Function Buttons


 **Disconnect:** Disconnects the current connection on the Status View panel.

NOTE: If you want to connect to another site, disconnect from the currently connected system on the Status View panel first by clicking the  button.

 **Remote Setup:** Allows changing the setup of the remote DVR connected to the Status View panel.



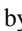
NOTE: Refer to the manual for each applicable remote DVR for more details on system setup.

 **Remote System Log:** Displays the system log information of the remote DVR connected to the Status View panel.

 **Remote Event Log:** Displays the event log information of the remote DVR connected to the Status View panel.

NOTE: Refer to 3.3 *Menu – Remote Menu* for more details on the Remote System Log and Remote Event Log.

NOTE: When the remote site is not connected to the Status View panel, Remote Setup, Remote System Log and Remote Event Log menus can be accessed by clicking the right mouse button after selecting the remote site on the Remote Sites panel.

 **Remote Panic Control:** Controls the panic recording of the remote DVR connected to the Status View panel. The  (On) button indicates that the remote DVR is not in the panic recording mode and you can start panic recording by clicking the button. The  (Off) button indicates that the remote DVR is in the panic recording mode and you can stop panic recording by clicking the button.

NOTE: Remote Panic Control may not be supported, depending on the specifications and version of the remote DVR.

Status Display Window

The Status Display Window displays the event, alarm out, system check and recording status information of the remote system connected to the Status View panel in real-time.

NOTE: Depending on the specifications of the remote DVR, status display may not be supported.

- **Event:** Displays events (Motion Detection, Alarm In, Object Detection, Video Blind, Audio Detection, Trip-Zone, Tampering). The status display of event detection will continue during the preset dwell time of the event-driven recording.

 Event Detection



 No Event Detection

 Event Off

- **Alarm Out:** Displays status of the alarm-out signals.

 Alarm-Out  No Alarm-Out  Alarm-Out Off

- **System Check:** Displays the function status of the camera, alarm, and recording.

 Normal  Irregular  System Check Off

- **Record From/To:** Displays the record period.

- **Status:** Displays the recording, playback, archiving, clip-copy status.

 On  Off

- **Version:** Displays the system version information.

Appendix A – Reviewing Video Clips

You do not need to install any special software on your personal computer to review video saved as Self-Player files. The file contains a Player program (Clip Player). Double-clicking the target file starts the Player program.

NOTE: It is suggested that the computer used for the Clip Player program has at least an 800MHz Pentium III (Intel Pentium Dual Core 2.2GHz recommended). If your CPU is slower than this, video clips recorded at maximum speed with very high image quality will be played back slowly. Also DirectX 9.0 or higher is required to install, and the VGA card with 16MB or higher video RAM is recommended for proper operation.


NOTE: If you select the *Save Password* option when saving recorded video, you will be asked to enter the password to initiate the Clip Player program.


NOTE: If you selected the *Exclude Player* option when saving recorded video, you must run the Self-Player program which is included on the RASplus installation CD to play the saved file.




The ClipPlayer Screen displays the clip images.


NOTE: Proper image display depends on the display settings of your PC. If you are experiencing display problems, click the right mouse button on the background screen and select *Properties* → *Settings* then set the *Color quality* to “32 bit”. Then select *Advanced* → *Troubleshoot*, and then set the *Hardware Acceleration* to “Full”. Please make sure that DirectX version 9.0 or higher has been installed if the display problem continues. To check the version of DirectX, click *Start* → *RUN* and type “dxdiag” then hit the enter key which will display DirectX Diagnostic Tool dialog box. Then move to the *Display* tab and make sure *DirectDraw Acceleration* is set to “Enabled”. When using the Microsoft® Windows® XP operating system, test *DirectDraw* by selecting the *DirectDraw Test* button. Please check the driver version of the video card and update it to the latest version available. If you still have display problems after changing all display settings as described above, try replacing the video card. Video cards with an ATI chipset are recommended.


Clicking  exits the Player program.

Click  to go to the beginning of the video clip.


Click  to play the video clip in fast reverse.


Click  to go back one frame of the video clip.

Click  to play the video clip.

Click  to go forward one frame of the video clip.


Click  to play the video clip in fast forward.


Click  to go to the end of the video clip.

Click  to show the previous camera group if there is recorded video in the previous camera group in the current screen mode.

Click  to cycle through the screen layouts. It cycles through 2x2, 1+7, 3x3, 4x4, 4x5, 5x5 and 1+32.


NOTE: 4x5, 5x5 and 1+32 screen modes might not be supported depending on the number of saved camera channels.

Click  to show the next camera group if there is recorded video in the next camera group in the current screen mode.

Click the  icon to set up the Clip Player properties.


Print	
Frame Info	
Image Processing	
Play Speed Control	
Drawing Mode	▶
Screen Size	▶
Aspect Ratio	▶
OSD Setup...	
✓ Enable Audio	
✓ Anti-Aliasing Screen	
✓ Show Text-In	

- **Print:** Prints the current image.
- **Frame Info.:** Displays Channel, Title, Time, Type, Size and Resolution information about the image.
- **Image Processing:** Controls brightness, blur and sharpness of playback images. (Single-Screen Layout and Pause Mode Only)
- **Play Speed Control:** Changes the playback speed (**Play**) or fast forward/backward playback speed (**FF/RW**).
- **Drawing Mode:** Selects the draw mode level. If you are not sure about the best draw mode level for your system, try each level until the image displays properly.
- **Screen Size:** Changes the Clip Player screen size.
- **Aspect Ratio:** Changes the image aspect ratio displayed on each camera screen.
- **OSD Setup...:** Selects options to display on the screen.
- **Enable Audio:** Plays audio while playing back recorded video that has recorded audio. (Single-Screen Layout Only)
- **Anti-Aliasing Screen:** Enhances image display quality on the screen by smoothing stair stepping (aliasing) effects in the enlarged image. If video plays slow because of your CPU's slow speed, releasing the **Anti-Aliasing Screen** option might improve playback speed.
- **Show Text-In:** Displays text-in data if the video was recorded with text-in data. In the single-screen layout, text-in data is displayed with images on the screen. In multi-screen layouts, click the right mouse button on a camera screen and then a text-in menu.


Click the  icon to save clip images.


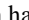
Save as Image
Save as Image (Actual Size)
Save as Clip-Copy
Save as Video
Clip-Copy Log

- **Save as Image:** Saves the current image as a bitmap or JPEG file.
- **Save as Image (Actual Size):** Saves the current video frame as a bitmap or JPEG file in its actual size. (Single-Screen Layout Only)
- **Save as Clip-Copy:** Saves video of desired time range as an executable file.
- **Save as Video:** Saves video of desired time range as an AVI file.
- **Clip-Copy Log:** Saves the clip copy log information as a text file. The user information about Save As Clip Copy will be logged as "Internal-Copy".

Click the  icon to enlarge the image or display the image in its actual size (Single-Screen Layout Only). You can move the enlarged image by clicking the left mouse button and dragging.

Click the  icon to display the image full screen.

Click the  icon and set up the date and time of a saved image to view the image from the specific time.

Encryption icons display in the bottom-right corner.  displays when the clip file has not been tampered with, and  displays and playback stops when the system has detected tampering.

NOTE: If the VGA card or monitor does not support 800x600 video resolution, Full Screen might not display properly. If this happens, press the ESC key on your PC keyboard to return to the normal screen mode.

Click the slider bar and move it left or right to move through the video clip.

Placing the mouse cursor on an image and clicking will cause that image to display full frame.

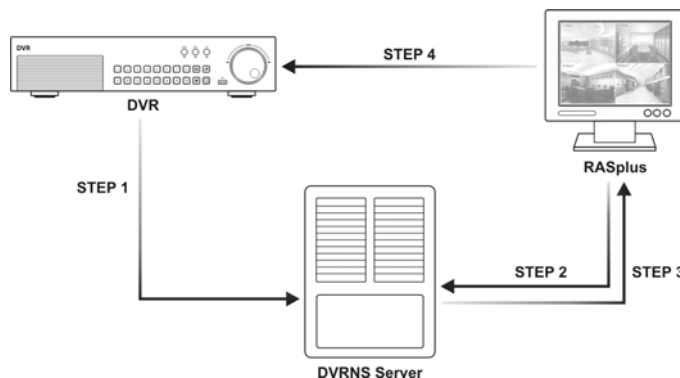
NOTE: Some options may not be available, depending on the specifications and version of the remote DVR.

Appendix B – DVR Name Service (DVRNS)

Overview

Using Static IP addresses in LAN/WAN networks requires high management overhead and increases the cost burden to users. Therefore, it has become essential for DVRs to support Dynamic IP addresses in ADSL/VDSL networks using DHCP (Dynamic Host Configuration Protocol). This reduces cost burdens and increases cost effectiveness for system users. Use the following steps to set up a system using DVRNS.

System Configuration



STEP 1 (DVR → DVRNS Server): Register the unit name and IP address of the DVR during the DVRNS setup on the Remote DVR. This unit name and IP address will be registered on the DVRNS server directly.

NOTE: Refer to the applicable manual for each remote DVR for more details on DVRNS setup.

STEP 2 (RASplus → DVRNS Server): Request the IP address of the remote DVR using the registered unit name of the DVR you want to connect to.

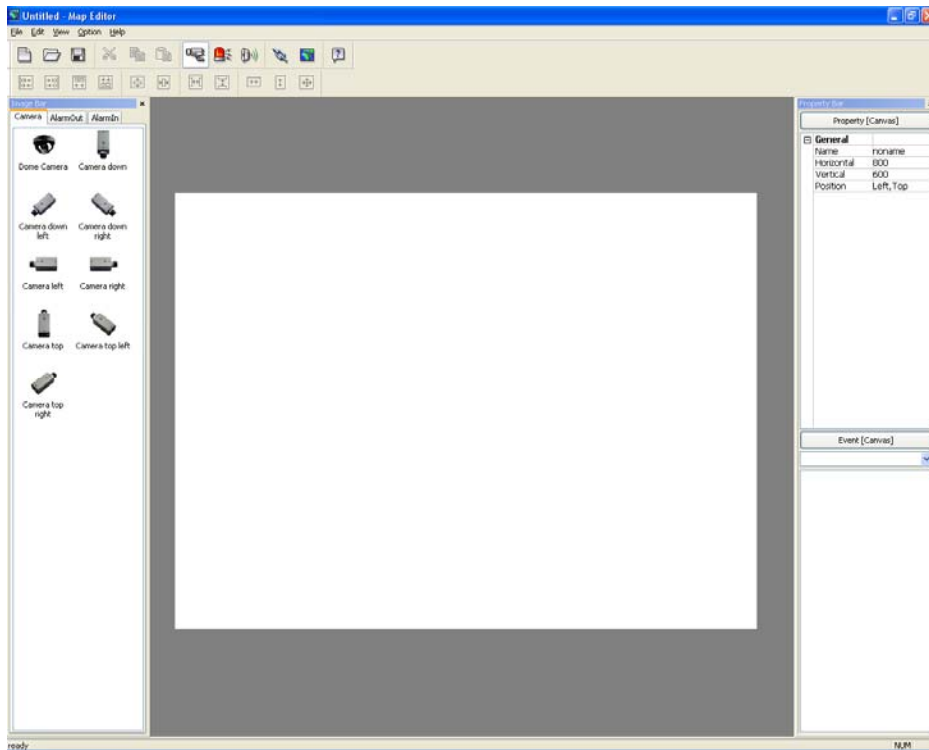
STEP 3 (DVRNS Server → RASplus): The DVRNS server notifies RASplus of the requested IP address.

STEP 4 (RASplus → DVR): Connect to the target DVR using the IP address returned from the DVRNS server.

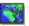
NOTE: You should follow steps 2 to 4 whenever connecting to the remote site because the DVR name and IP address might change at anytime.

Appendix C — Map Editor

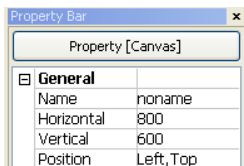
The Map Editor program allows you to create maps of remote sites. With the drag-and-drop and link function, you can create and edit the map easily and efficiently. Run the program by selecting MapEditor from the RASplus options under the Start menu in Windows.



Background Image Setting

First, prepare the image in a bitmap or JPEG file format. Click the  (Background) button on the toolbar and select the background image of the map.

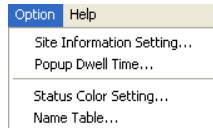
Go to the Property [Canvas] tab and set the background image information.



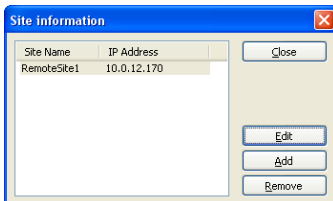
- **Name:** Enter a name of the background image.
- **Horizontal/Vertical:** Adjust the background image size by clicking each field and changing the numbers.
- **Position:** Adjust the position of the background image on the screen. Select Auto Fit to fit the map screen size to the background image.

Option Menu

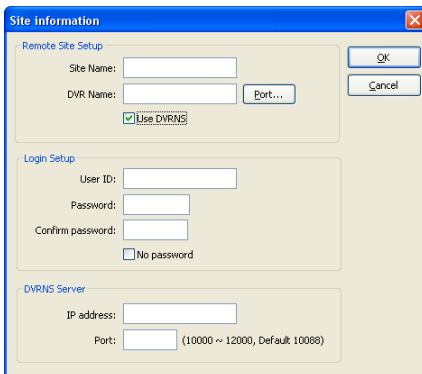
Click the Option menu to set up the remote site information, device status display and remote site name to display.



Site Information Setting: Select the Site Information Setting... in the Option menu to set the information about the remote site connections, and the following Site Information setup window appears.



Click the Add button, and the following Site Item box appears.



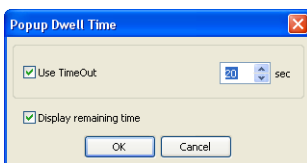
- **Remote Site Setup:** Enter the site name and IP address of the DVR connected to the devices you want to include on the map. Click the Port... button and enter the network IP port number (8000 to 12000) that matches the value set during the LAN setup on the DVR. Check the box beside Use DVRNS to use the DVR name service.

NOTE: If you use DVR Name Service, you can enter the name registered on the DVRNS server instead of the IP address of the DVR, and you do not need to enter the network IP port number.

- **Login Setup:** Enter the user ID and password for the DVR associated with devices.
- **DVRNS Server:** Enter the IP address and port number of the DVRNS server, which matches the values set during the DVRNS setup on the DVR.

Clicking the OK button saves the setting.

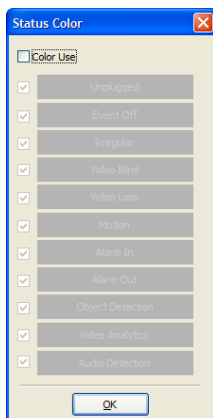
Popup Dwell Time: Select Popup Dwell Time... in the Option menu to set the duration of the Map popup screen displayed when events are detected, and the following Popup Dwell Time window appears.



Check the box beside Use Timeout and adjust the time out dwell from 1 second to 5 minutes. Selecting Display remaining time displays the remaining time out dwell on the Map popup screen.

NOTE: *Popup Dwell Time* will be applied to all maps displayed on the map panel.

Status Color Setting: Select the Status Color Setting... in the Option menu and the following Status Color window appears. You can set the device to display a unique color reflecting its status on the Map panel.



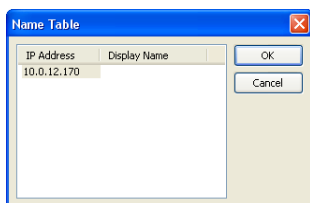
Check the box beside **Color Use** and select each status box to use. Click each selected status box and select the desired color. When done, click the OK button.

- **Unplugged:** Either connection to the remote site has failed, or Device No. for the device is not supported by the remote site.
- **Event off:** Event detection function is not set up.
- **Irregular:** The device is not working properly.
- **Video Blind/Video Loss/Motion/Object Detection/Video Analytics/Audio Detection/Trip-Zone/Tampering:** The event is detected.
- **Alarm In:** Alarm in is detected.
- **Alarm Out:** Alarm out is detected.

NOTE: Devices are displayed as **Irregular** based on the system check settings and as **Video Blind, Video Loss, Motion, Object Detection, Video Analytics, Audio Detection, Trip-Zone, Tampering, Alarm In, and Alarm Out** based on the event detection settings on the remote DVR.



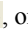
NOTE: The device displays mixed color when detecting more than two statuses at the same time.

Name Table: Select Name Table... in the Option menu to display the name instead of the IP address of the DVR on the Map panel, and the following Name Table setup window appears.

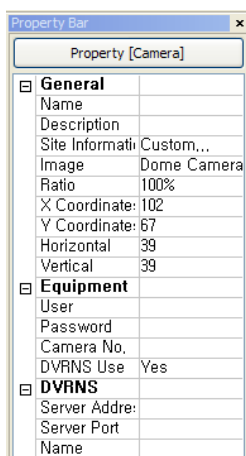


Click the Display Name field of each IP address and enter the name of the DVR to display on the popup screen.

Device Setting

Selecting the , , or  buttons on the toolbar displays the Camera, AlarmOut and AlarmIn tabs under the Image Bar. Select the icons, and drag and drop them at the desired locations on the background image.

Go to the Property [Camera/AlarmOut/AlarmIn] tab and set the device information.



General

- **Name:** Enter a device name.
- **Description:** Enter description of the device.
- **Site Information:** Select a proper site for the device in the list, and the Equipment fields (User, Password, IP Address and Port) are filled automatically with the information set in Site Information Setting....
- **Image:** Select an image of a device.
- **Ratio:** Adjust the size of the device image.
- **X Coordinates/Y Coordinates:** Adjust the position of the device image by clicking each field and changing the numbers.
- **Horizontal/Vertical:** Adjust the size of the device image by clicking each field and changing the numbers.
- **Popup camera:** If the selected device is an alarm-in device, you can associate a camera with the sensor by entering the camera name. The camera name you enter should be the same as the camera name entered under the Property [Camera] tab. The Map panel pops up another screen and displays images of the camera associated with the sensor on the popup screen when an alarm-in event occurs.

Equipment

- **IP Address/User/Password/Port:** Each field is filled in automatically with the information (user ID, password, and port number) set in *Site Information Setting...*, or you can enter it manually.
- **Device No.:** Set the device number (1 ~ 32) for each device. If the selected device is a camera, **Device No.** changes to **Camera No.**
- **DVRNS Use:** Select **Yes** to use DVR Name Service, and the **DVRNS** field appears. Enter the IP address (or domain name) and the port number of the DVRNS server, and the name of the DVR registered on the DVRNS server.

NOTE: You should not select numbers that are not supported for devices on the remote DVR when selecting **Device No.** Otherwise, the map cannot detect the device and it displays the device status as **Unplugged**. For example, **Device No.** should be from 1 to 16 when the device is connected to a 16-channel DVR.

NOTE: If you set the IP address and port number of the DVRNS server in *Site Information Setting...*, the **DVRNS** fields are filled with the information automatically.

NOTE: The **DVRNS** function is supported only with the devices associated with a DVR providing the **DVRNS** (DVR Name Service) function.

Go to the Event [Camera/AlarmOut/AlarmIn] tab and set the option for the devices.


- **Event [Camera]:** Selecting an event from a drop-down list and checking the **Watch View Popup** box set the Map panel to pop up another screen when an event occurs. Selecting **Click** from a drop-down list and checking the **Watch View Popup** box pops up another screen by clicking the mouse button on the camera icon on the Map panel regardless of event detection.

- **Event [AlarmOut]:** Checking the **Switch on/off** box controls the alarm-out remotely by clicking the alarm-out icon on Map panel.

- **Event [AlarmIn]:** Selecting **Alarm-in Event** from a drop-down list and checking the **Watch View Popup** box sets the Map panel to pop up another screen when an alarm-in event occurs. Selecting **Click** from a drop-down list and checking the **Watch View Popup** box pops up another screen by clicking the mouse button on the alarm-in icon on the Map panel regardless of event detection.

NOTE: The popup camera should be associated with the alarm in device to use the popup function. Refer to the **Device Setting – General, Popup camera** section for the popup camera association.

Link Setting

Click the  (Link) button on the toolbar and place it on the screen linked with a sub-map. Then the **Link Map** box appears. Select the individual link boxes by using the Ctrl key on the keyboard, and then adjust the size and position of the link box using a mouse, a keyboard or the icons shown below.



- **Interval adjustment:** Equalizes the distance between three or more selected boxes.



- **Size adjustment:** Equalizes the size of two or more selected boxes. Clicking the arrow keys while holding the Shift key on the keyboard changes the size of the selected boxes.

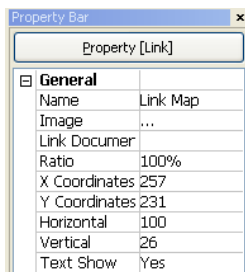


- **Position adjustment:** Arranges two or more selected boxes towards one direction or towards the center. Clicking the arrow keys while holding the Ctrl key on a keyboard changes the position of selected boxes.




- **Cut, Copy, Paste:** Cuts, copies or pastes the link box.

Go to the **Property [Link]** tab and set the properties of the selected link box.



- **Name:** Enter a name of the link box.
- **Image:** Double click the field and select an image to insert in the link box.
- **Link Document:** Double click the field and select a map to be linked with the link box.
- **Ratio:** Adjust the image size within the link box.
- **X Coordinates/Y Coordinates:** Adjust the position of the link box on the screen by clicking each field and changing the numbers.
- **Horizontal/Vertical:** Adjust the link box size by clicking each field and changing the numbers.
- **Text Show:** Select **Yes** to display the name of the link box on the selected image.

Clicking the  (**Save**) button on the toolbar saves the map. You can monitor remote sites by using the map. Refer to *3.2 Panel – Map Panel* section for details.

Appendix D — Monitoring Using Mobile Devices

NOTE: The following programs might not be supported, depending on the specifications and version of the remote DVR.

RAS Mobile for PDA

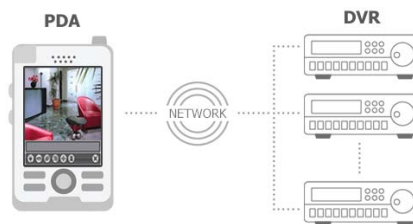
RAS Mobile for PDA allows you to access remote sites and monitor live video using the Windows Mobile based PDA anytime from virtually anywhere.

NOTE: The RAS Mobile for PDA installation file is provided on the RASplus installation CD and can be installed if RAS Mobile for PDA is supported for the remote DVR.

PDA system requirements for using the RAS Mobile program are:

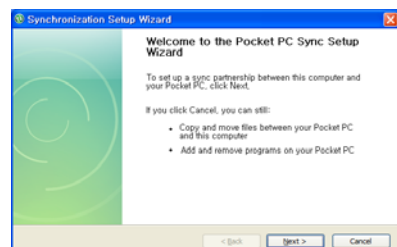
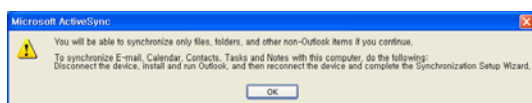
- Operating System: Microsoft® Windows® Mobile 5 or above
- Processor: ARMv4 Core compatible processor
- Display: 240x240 pixel, 320x240 pixel or 640x480 pixel
- Memory: 4MB of storage memory / 96MB or more of RAM
- Wireless LAN: Support IEEE 802.11
- Input Device: Touch screen
- Desktop PC: Microsoft® Windows® 2000/Sever 2003/XP (with Microsoft ActiveSync 4.5 or above), Vista/7 (with Microsoft Windows Mobile Device Center 6.1 or above)

System Diagram

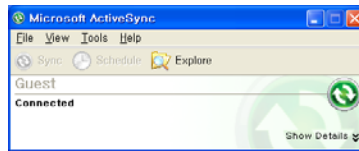


Installation

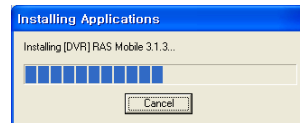
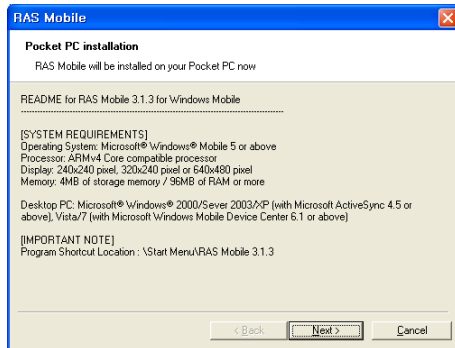
1. Install the Microsoft ActiveSync or Microsoft Windows Mobile Device Center program on the PC in order to install the RAS Mobile program on the PDA. You can download the installation file from the following website: <http://www.microsoft.com/windowsmobile/en-us/downloads/default.mspx>.
2. Connect the PDA to the PC. Click the OK button when the following message box appears, and then click the Cancel button when the following setup screen appears. This procedure can be skipped if the Microsoft ActiveSync or Microsoft Windows Mobile Device Center program is already installed on the PC.



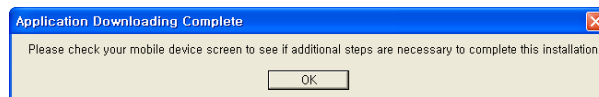
- The Microsoft ActiveSync or Microsoft Windows Mobile Device Center program runs in the PC, and the connection status between the PC and PDA is displayed as follows. If the connection is made correctly, it is displayed as **Connected**.




- Run the RAS_Mobile_Setup.exe file on the PC.
- When the following dialog box appears, click **Next**. The progress bar shows the installation progress.



- When the following dialog box appears, click the **OK** button. Now, you can install the RAS Mobile program on the PDA.



- Check the PDA screen. You will be asked whether or not to install the RAS Mobile program on the PDA. Click the **Install** button at the bottom of the screen, and the RAS Mobile program is installed on the PDA (Default installation folder: My Device\Program Files\RAS Mobile 3.1.3).
- Run the RAS Mobile program on the PDA by double clicking the RAS Mobile icon  on the desktop screen or running the RAS_Mobile_Setup.exe file in the installation folder.

NOTE: To remove the program, select **Start on the Task Bar on the PDA. Go to Settings → System → Control panel → Add/Delete programs → [DVR] RAS Mobile 3.1.3** in order. Clicking the **Delete** button uninstalls the program.

Configuration and Operation

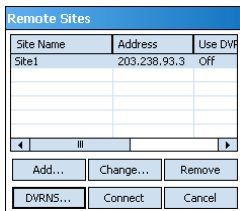
The Graphical User Interface (GUI) of the RAS Mobile is as shown below, and the description of each menu buttons follows.



- ① **Monitoring Screen:** Displays live video images from the cameras at the remote site.
- ② **Status Information:** Displays RAS Mobile version information and the status information about the remote site connection.
- ③ **Menu Buttons:** Performs RAS Mobile functions.

- Connection** **Camera** **Screen Mode** **Image Adjustment**
- PTZ Control** **Alarm out Control** **Disconnection**

Connection: Click the button to perform remote site management, DVRNS settings and remote connection.



- **Change...:** Select the site you want to change and click the **Change...** button, and then edit the site information.
- **Remove:** Select the site you want to remove and click the **Remove** button.
- **DVRNS...:** Click the **DVRNS...** button to set up the DVRNS function and the **DVR Name Service** screen is displayed. Enter the DVRNS server's IP address (or domain name) and port number. The IP address (or domain name) and port number you enter should match the values set during the DVRNS setup on the remote DVR you want to connect to.

- **Connect:** Select the site you want to connect to and click the **Connect** button. Once you connect to the remote site, the live video of camera 1 displays. If the connection fails, the error message will be displayed in the Status Information box.
- **Add...:** Click the button to add the remote site.



- **Site Name:** Enter a site name to use in the RAS Mobile program. Up to 32 characters may be used for the site names.
- **IP Address:** Enter the IP address of the remote site. If the remote DVR uses the DVRNS function, check **Use DVRNS** and enter the remote site's name registered on the DVRNS server instead of the IP address. The name you enter should match the name set during the DVRNS setup on the remote DVR.
- **Watch Port:** Set up the port number of the Watch program. The IP port number of Watch Port should match the value set during the network setup of the remote DVR.
- **User ID / Password:** Enter the user ID and password. The user ID and password you enter should match the user ID and password used to log on to the DVR. If you have entered a user ID and a password, the site will be connected automatically.

NOTE: The RAS Mobile program might not work properly when connecting to the remote site via Microsoft ActiveSync or Microsoft Windows Mobile Device Center.

Camera: Displays the camera buttons. Click the desired camera button to select the camera to be viewed. Live video Images from the selected camera and the OSD information including camera name and date/time will be displayed on the Monitoring Screen. No Video will be displayed when there is no video signal from the selected camera.

NOTE: The number of camera buttons depends on the specifications of the remote DVR.

Screen Mode: Allows you to select the desired screen layout. The formats available are single-screen, quad and full-screen.



Single Screen



Quad Screen



Full Screen

NOTE: The selected camera video in the quad screen mode will be outlined in green.

NOTE: PTZ control during the full-screen display will be performed using the arrow buttons of the PDA device. Clicking any place on the screen in the full-screen mode returns to the previous screen mode.

Image Adjustment: Allows you to adjust the brightness, contrast, hue and saturation of the image. Selecting (Undo) cancels the image processing operation and reloads the original image.

- ① Brightness ② Contrast ③ Saturation ④ Hue ⑤ Undo



PTZ Control: Allows you to control pan, tilt, iris and zoom of the camera at the remote site, and set certain position as preset and go to desired views.

- ① Zoom In/Out ② Iris Open/Close ③ Focus Far/Near
④ Set Preset/View Preset ⑤ Move buttons



Alarm Out Control: Allows you to control alarm out devices at the remote site.

Disconnection: Disconnects the current connection and closes the RAS Mobile program.

Matrix Video for Android

Matrix Video for Android allows you to access DVRs (network video transmitters and network cameras included) and monitor live video remotely via network connection using the Android platform based mobile devices anytime from virtually anywhere.


System Requirements

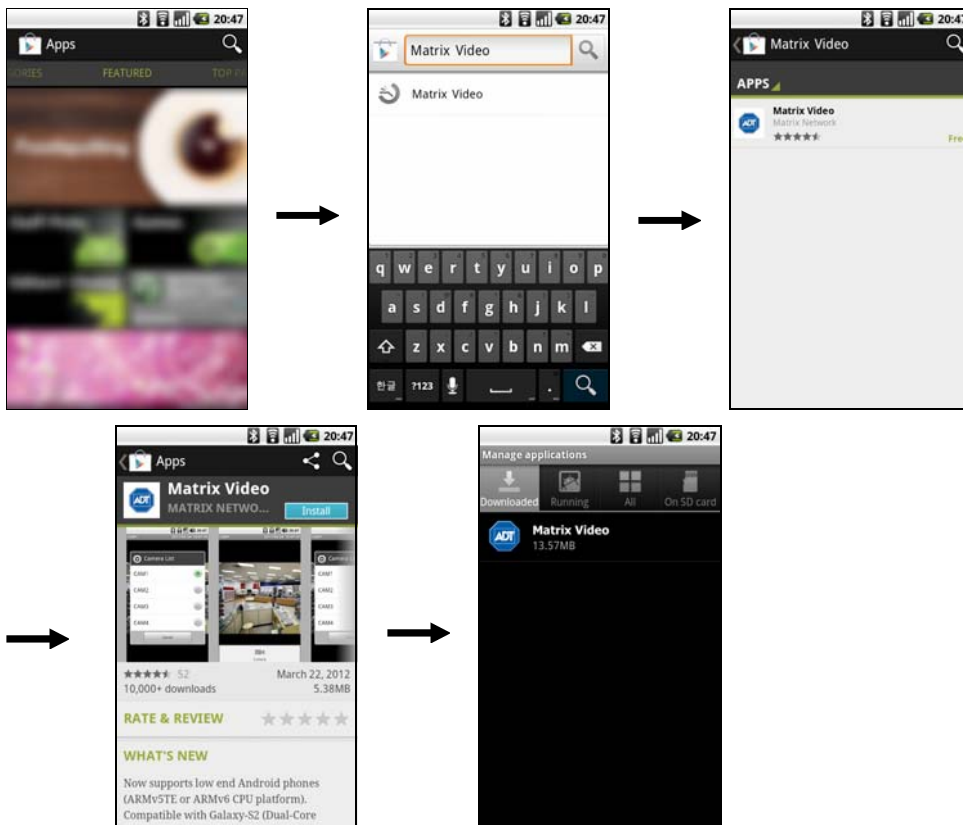
- Operating System: Google Android 2.0 to 4.1
- Processor: ARMv5TE, ARMv6 and ARMv7-A compatible processor
- Display: 240x240 pixel to 1280x800 pixel
- Storage: 25MB or more
- Network: Wi-Fi or mobile network (3G or 4G) supported by the Android mobile device

System Diagram



Installation

1. Run the  Play Store (Google Play) application in the mobile device.
2. Enter Matrix Video in the search field of the Play Store (Google Play) application.
3. Install the Matrix Video program and run the program.



NOTE: If you want to remove the Matrix Video program, go to *Settings* → *Applications* → *Manage applications*. Tap *Matrix Video* and *Uninstall* button.

CAUTION: This program uses large amounts of data and you are responsible for all data charges. Please contact your service provider's customer service to confirm or add an unlimited data plan.

Operation

1. Run the Matrix Video program. Push the Menu button of the mobile device and the following default menu is displayed.



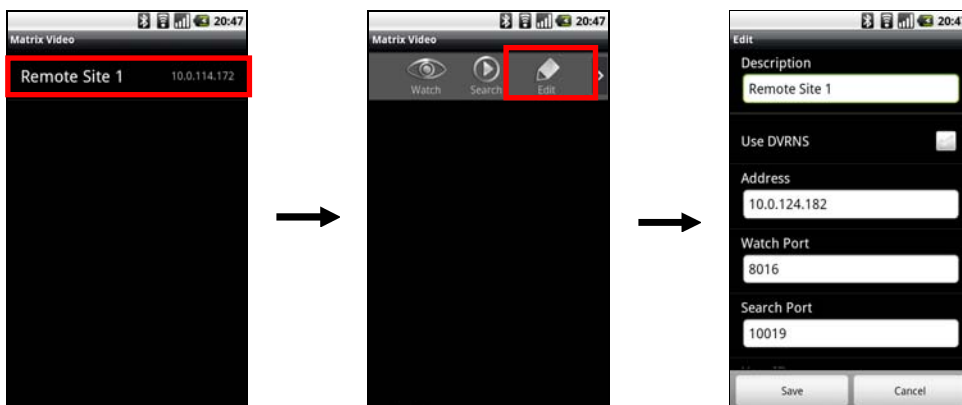
- **New site:** Tap to register DVRs.
- **Delete site:** Tap to delete a DVR. This menu will be available only when there are DVRs registered.
- **Settings:** Tap to edit the settings or check the information about the Matrix Video program.

2. Tap the New site button and enter the DVR information to register it.



- **Description:** Enter the DVR name to use in the Matrix Video program.
- **Use DVRNS:** If the DVR uses the DVRNS function, enable the Use DVRNS option. You can set up the information for the DVRNS server by tapping the Settings button in the default menu.
- **Address, Watch Port, Search Port, Audio Port:** Enter the IP address and port number of the DVR. If the DVR uses the DVRNS function, check that the Use DVRNS option is enabled and enter the DVR name registered on the DVRNS server instead of the IP address. The name you enter should match the name set during the DVRNS setup on the DVR.
- **User ID, Password:** Enter the user ID and password. The user ID and password you enter should match the user ID and password used to log on to the DVR.

3. If you want to edit the information for the registered DVR, select the DVR from the DVR list. Tap Edit in the menu and edit the information.



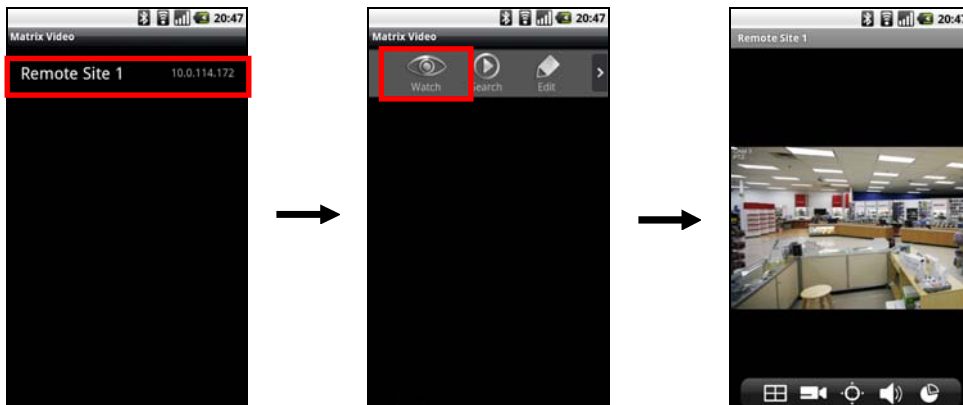
4. Tap the **Settings** button in the default menu. Check the settings for the Matrix Video program and edit the settings if necessary.



- **DVRNS:** If the DVR uses the DVRNS function, set up the information for the DVRNS server. Enter the IP address (or domain name) and port number of the DVRNS server. The IP address (or domain name) and port number of the DVRNS server should match them registered on the DVRs.
- **View:** Select the language to be used when displaying text on the monitored video such as camera titles. The language of the text so that textual information is displayed properly. If the language of the text is not supported by **Character Encoding** of the Matrix Video program, select **Western**.

Monitoring

1. Select a DVR from the DVR list, and a menu is displayed. Tap **Watch**. Video from the DVR is displayed on the screen.

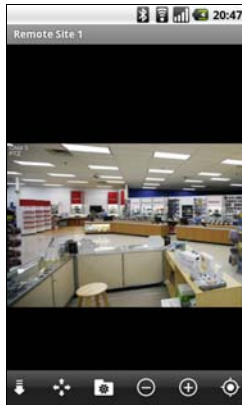
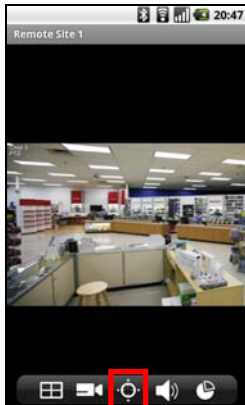








- **Screen:** Tapping a camera screen displays video from the camera in single-screen layout. Pushing the Cancel button of the mobile device returns to the previous layout. Dragging the screen moves to the previous or next camera group as long as there is video for the groups in the current screen layout. Tapping a camera screen in single-screen layout hides or displays OSD (On Screen Display) information.
- **[Grid Icon] (Layout):** Changes the screen layout. Tapping the button displays a list of available layouts and allows you to select a layout. In landscape, tapping and holding the screen displays a list of available layouts.
- **[List Icon] (Camera):** Displays a list of camera channels. Tapping a channel displays video from that camera. This function is not supported in landscape.
- **[PTZ Icon] (PTZ Mode):** Enters the PTZ mode and allows you to control a PTZ camera (in single-screen layout only). This is not available if a PTZ camera is not configured in the DVR. A PTZ icon is displayed on the camera screen when the PTZ mode is available.
- **[Audio Icon] (Audio):** Enables or disables two-way audio with the DVR (in single-screen layout only). The screen layout or camera channels cannot be changed while two-way audio is enabled.
- **[Data Icon] (Received Data):** Displays the data volume. This function is not supported in landscape.

NOTE: Some functions may not be supported and the corresponding buttons may not be displayed, depending on the specifications and version of the DVR.

PTZ Control

Tapping the  (PTZ Mode) button enters the PTZ mode and allows you to control the PTZ camera.



-  (Exit): Exits the PTZ mode.
-  (Move): Allows you to move the PTZ camera direction.
-  (Preset View): Displays a list of Presets, which you have set in the DVR. Tapping a Preset moves the PTZ camera to the location.
-  (Zoom Out/In): Zooms out or in video.
-  (Focus Near/Far): Focuses near or far.
-  (IRIS Close/Open): Closes or opens IRIS.

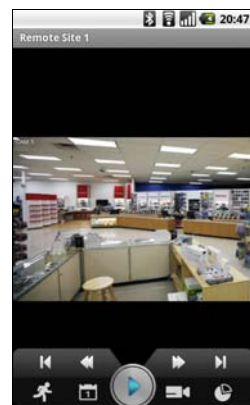
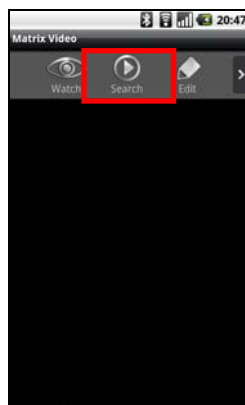
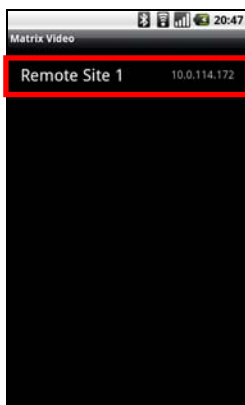
NOTES:




- Not all PTZ functions above may be supported in landscape.
- Dragging screen in the PTZ mode moves the PTZ camera in the opposite direction.






2. Push the Cancel button of the mobile device to monitor video from other devices. The current connection is released and the default menu is displayed.

Search and Playback


Select a DVR from the DVR list, and a menu is displayed. Tap **Search**. Video recorded in the DVR is displayed on the screen.



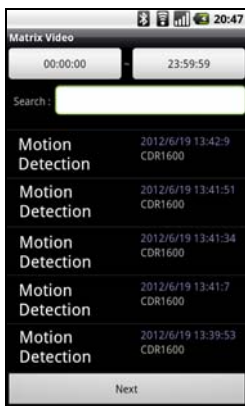
- Screen: Supports single-screen layout only. Tapping a camera screen hides or displays OSD (On Screen Display) information.
-  (Play/Pause): Plays or pauses recorded video on the screen.
-  (Move to the First Image/Last Image): Moves to the first/last recorded image of the date.
-  (Fast Backward/Forward): Plays back recorded video fast backward or fast forward.

-  (Move to the Previous Image/Next Image): Moves to the previous/next image (frame). This function is not supported in portrait.
-  (Event Search): Allows you to search for a specific event. If the device is a network camera or network video transmitter, not all events are searched but only the events that occurred while recording on an SD memory card is enabled. This function is not supported in landscape.
-  (Calendar Search): Allows you to search for recorded video of a specific time. This function is not supported in landscape.
-  (Camera): Displays a list of camera channels. In landscape, tapping and holding the screen displays a list of camera channels. Tapping a channel displays recorded video from that camera.
-  (Received Data): Displays the data volume. This function is not supported in landscape.

Search by Event

Tapping the  (Event Search) button in the search and playback mode allows you to search for a specific event. If the device is a network camera or network video transmitter, not all events are searched but only the events that occurred while recording on an SD memory card is enabled.


NOTE: This feature is NOT supported for PC-based DVRs.

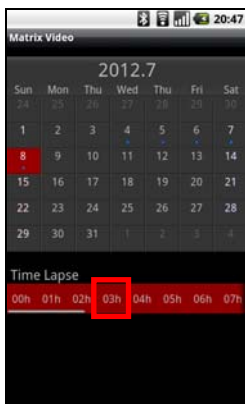


A list of events that occurred during the defined time on the same date as the recorded video on the current screen is displayed (supported only for Alarm In, Motion Detection and Video Loss events). If you want to search for events for other dates, change the date by using Calendar Search and repeat Event Search.

- **Search:** If you enter text that you want to search for, search results matching the text are displayed from the event list.
- **Event List:** Tapping an event from the list displays the event-detected image on the screen. Tapping the **Next** button at the bottom displays the next 100 events.

Search by Calendar

Tapping the  (Calendar Search) button in the search and playback mode allows you to search for recorded video of a specific time.

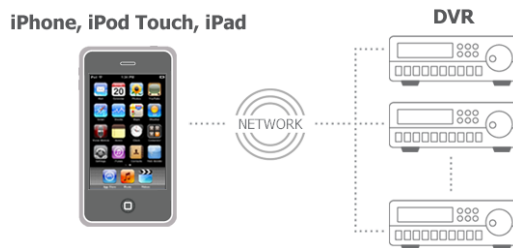


Tapping a date on the calendar displays the recorded data from the selected date by time in one-hour segments at the bottom. → Tapping a specific hour at the bottom allows you to select a precise time down to the minute and second. → Tapping the **Move** button displays recorded video of the selected time.

Matrix Video for iOS

Matrix Video allows you to access DVRs (network video transmitters and network cameras included) and monitor live video remotely via network connection using the iOS based mobile device (iPod Touch, iPhone or iPad with iOS 4.0 or later version) anytime from virtually anywhere.

System Diagram

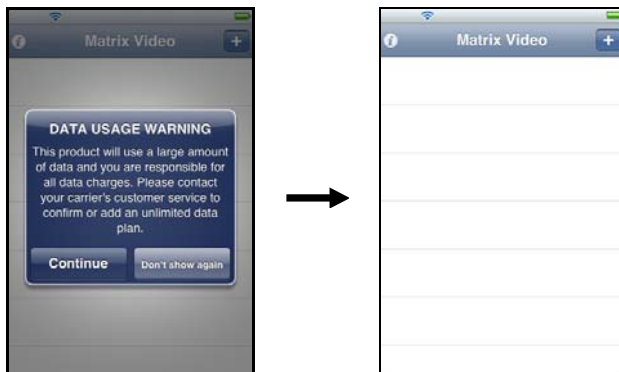


Installation

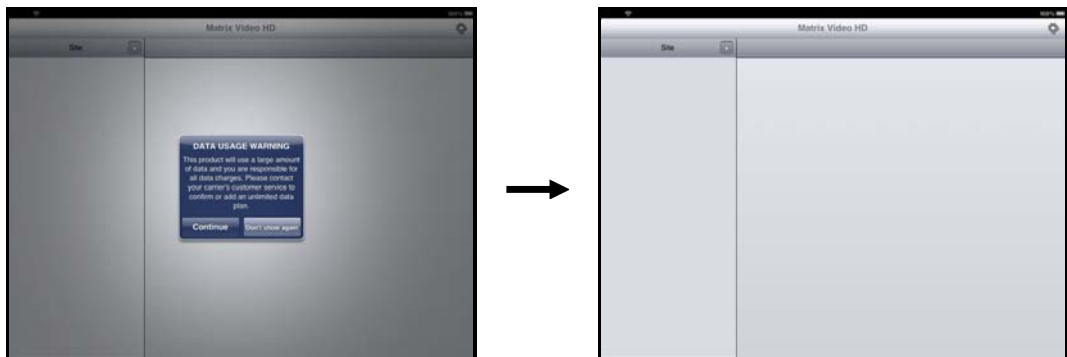
1. Run the App Store application in the mobile device.
2. Enter Matrix Video in the search field of the App Store application.
3. Install the Matrix Video program and run the program.



iPod Touch or iPhone



iPad

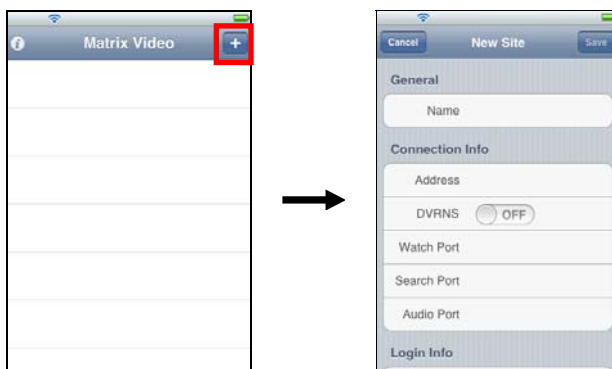


CAUTION: This program uses large amounts of data and you are responsible for all data charges. Please contact your service provider's customer service to confirm or add an unlimited data plan.

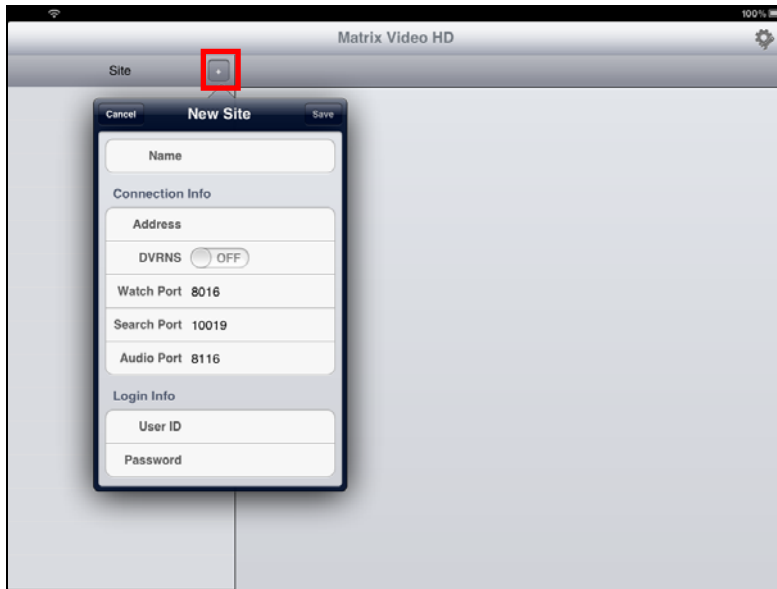
Operation

1. Tap the **+** button and enter the DVR information to register the DVR.

iPod Touch or iPhone



iPad



- **General:** Enter the DVR name to use in the Matrix Video program.
 - **Connection Info:** Enter the IP address and port number of the DVR. If the DVR uses the DVRNS function, enable the DVRNS option and enter the DVR name registered on the DVRNS server instead of the IP address. The name you enter should match the name set during the DVRNS setup on the DVR.
 - **Login Info:** Enter the user ID and password set on the DVR. The user ID and password you enter should match the user ID and password used to log on to the DVR.
2. If the registered DVRs use the DVRNS function, go to **Settings** → **Matrix Video** in the mobile device. Select **DVRNS** and enter the IP address (or domain name) and port number of the DVRNS server. The IP address (or domain name) and port number of the DVRNS server should match them registered on the DVRs.



3. If you want to edit the information for the registered DVR or delete a DVR, select the DVR from the DVR list and **Edit** in the menu.

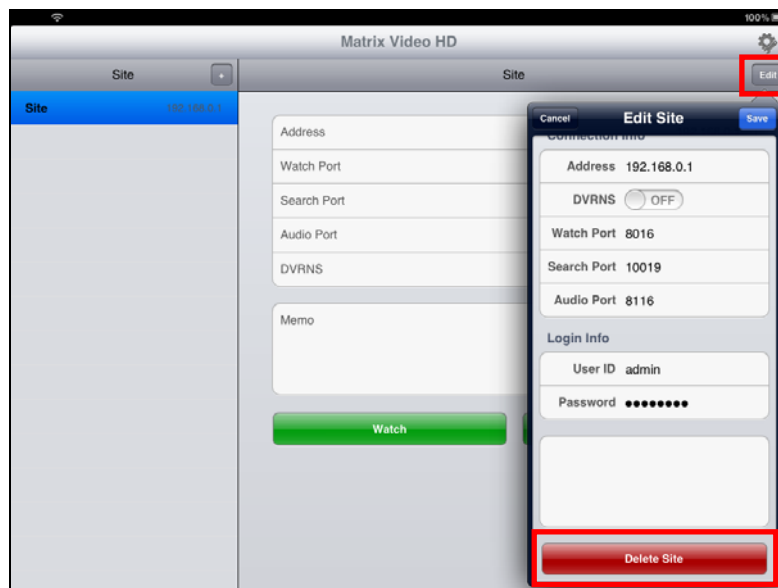
Editing DVR's information on iPod Touch or iPhone



Deleting a DVR on iPod Touch or iPhone



Editing DVR's information or deleting a DVR on iPad



Monitoring

Select a DVR from the DVR list, and a menu is displayed. Tap **Watch**. Video from the DVR is displayed on the screen.



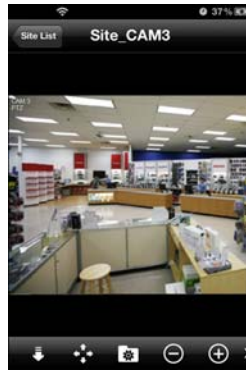
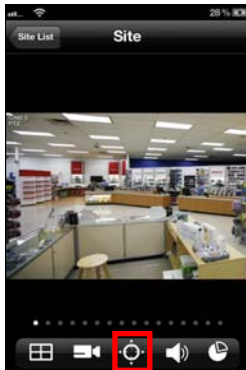
- **Site List:** Releases the connection to the DVR and returns to the site list.
- **Screen:** Tapping a camera screen displays video from the camera in single-screen layout. Dragging the screen moves to the previous or next camera group as long as there is video for the groups in the current screen layout.
- **[Layout Icon]:** Changes the screen layout. Tapping the button changes the layout in the following order: single-screen → quad → 3x3 or 4x4. The available layouts vary depending on the mobile device: single-screen only for iPod Touch, single-screen and quad for iPhone, single-screen to 3x3 or 4x4 for iPad.
- **[Camera Icon]:** Displays a list of camera channels (in single-screen layout only). Tapping a channel displays video from the camera.
- **[PTZ Icon]:** (PTZ Mode): Enters the PTZ mode and allows you to control a PTZ camera (in single-screen layout only). This is not available if a PTZ camera is not configured in the DVR. A PTZ icon is displayed on the camera screen when the PTZ mode is available.
- **[Audio Icon]:** (Audio): Enables or disables two-way audio with the DVR (in single-screen layout only). It is not available to change the screen layout or camera channel while two-way audio is enabled.
- **[Data Icon]:** (Received Data): Displays the data volume.

NOTES:

- In landscape of iPod Touch or iPhone, not all buttons above may be displayed. In this case, tapping and holding the screen displays a menu of the buttons.
- Some functions may not be supported and the corresponding buttons may not be displayed, depending on the specifications and version of the DVR.
- Drag the menu bar to display hidden buttons when there is not enough space on the menu bar to display all the buttons.

PTZ Control

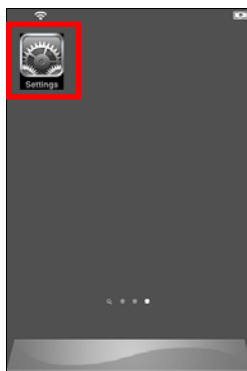
Tapping the  (PTZ Mode) button enters the PTZ mode and allows you to control the PTZ camera.



- (Exit): Exits the PTZ mode.
- (Move): Allows you to move the PTZ camera direction.
- (Preset View): Displays a list of Presets, which you have set in the DVR. Tapping a Preset moves the PTZ camera to the location.
- (Zoom Out/In): Zooms out or in video.
- (Focus Near/Far): Focuses near or far.
- (IRIS Close/Open): Closes or opens IRIS.

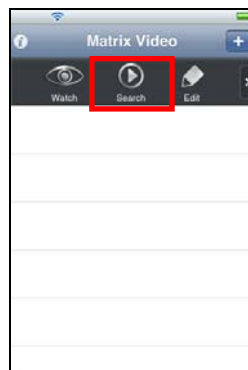
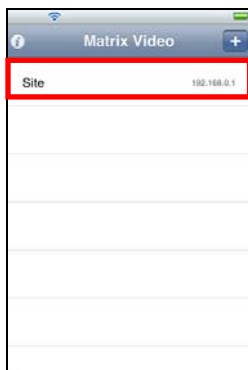
NOTES:

- Drag the menu bar to display hidden buttons when there is not enough space on the menu bar to display all the buttons.
- Not all PTZ functions above may be supported in landscape depending on the mobile device.
- Dragging screen in the PTZ mode moves the PTZ camera in the opposite direction. If you want the PTZ camera to move to the same direction you are dragging, go to *Settings* → *Matrix Video* in the mobile device and set the *PTZ Direction* – *Reverse* setting to *ON* as shown.



Search and Playback

Select a DVR from the DVR list, and a menu is displayed. Tap **Search**. Video recorded in the DVR is displayed on the screen.



- (Play/Pause): Plays or pauses recorded video on the screen.
- (Move to the First Image/Last Image): Moves to the first/last recorded image of the date.

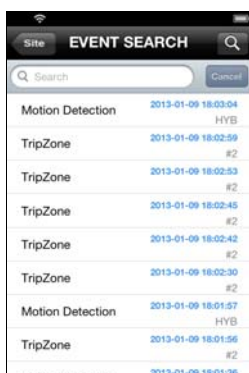
- (Fast Backward/Forward): Plays back recorded video fast backward or fast forward.
- (Move to the Previous Image/Next Image): Moves to the previous/next image (frame). This function is not supported in portrait.
- (Event Search): Allows you to search for a specific event. If the device is a network camera or network video transmitter, not all events are searched but only the events that occurred while recording on an SD memory card is enabled.
- (Calendar Search): Allows you to search for recorded video of a specific time.
- (Camera): Displays a list of camera channels. Tapping a channel displays recorded video from that camera.
- (Received Data): Displays the data volume.

NOTE: In landscape of iPod Touch or iPhone, not all functions above may be supported. In this case, perform the functions in portrait.

Search by Event

Tapping the (Event Search) button in the search and playback mode allows you to search for a specific event. If the device is a network camera or network video transmitter, not all events are searched but only the events that occurred while recording on an SD memory card is enabled.

NOTE: This feature is NOT supported for PC-based DVRs.

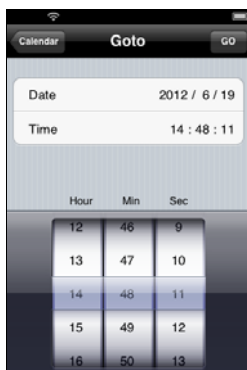


A list of events that occurred on the same date as the recorded video on the current screen is displayed. If you want to search for events for other dates, change the date by using Calendar Search and repeat Event Search.

- **Search:** If you enter text that you want to search for, search results matching the text are displayed from the event list.
- **Event List:** Tapping an event from the list displays the event-detected image on the screen. Tapping the Query Next button at the bottom displays the next 100 events.
- (Reload): Reloads the event list.

Search by Calendar

Tapping the (Calendar Search) button in the search and playback mode allows you to search for recorded video of a specific time.



Tapping a date on the calendar displays the recorded data from the selected date by time in one-hour segments at the bottom. → Tapping a specific hour at the bottom allows you to select a precise time down to the minute and second. → Tapping the Move button displays recorded video of the selected time.

Matrix Video for BlackBerry

Matrix Video for BlackBerry allows you to access DVRs (network video transmitters and network cameras included) and monitor live video remotely via network connections using BlackBerry OS based mobile devices anytime from virtually anywhere.

System Requirements

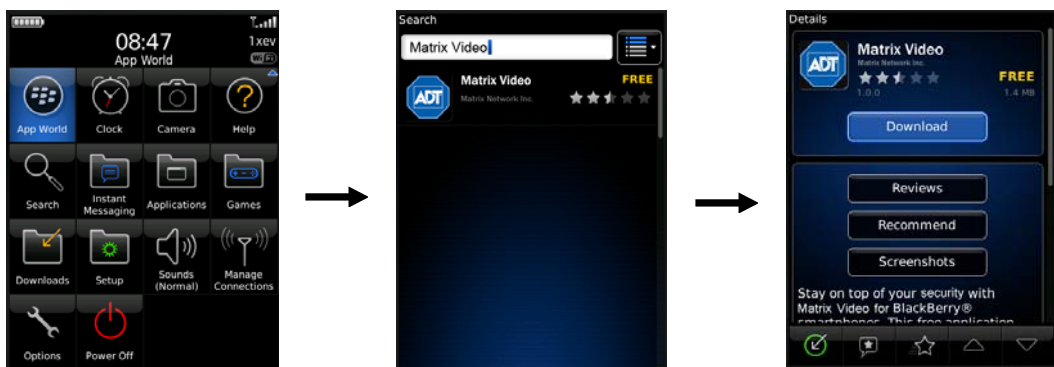
- Operating System: BlackBerry v4.6 or higher
- Processor: ARMv5te or ARMv7 compatible processor
- Display: 300x240 pixel or higher
- Storage: 300KB or more of internal storage
- Network: Wi-Fi or mobile network (3G) supported by BlackBerry mobile device

System Diagram



Installation

1. Run the application program called App World in the mobile device.
2. Enter Matrix Video in the search field of the App World application.
3. Install the Matrix Video program and run the program.

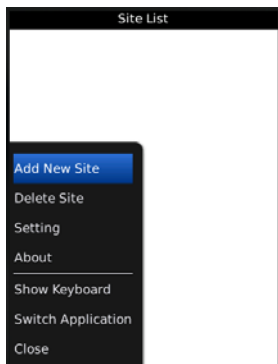


NOTE: If you want to remove the Matrix Video program, go to *Downloads* folder. Select *Matrix Video* and push the menu button of the mobile device and select *Delete*.

CAUTION: This program uses large amounts of data and you are responsible for all data charges. Please contact your service provider's customer service to confirm or add an unlimited data plan.

Operation

1. Run the Matrix Video program. Push the Menu button of the mobile device and the following default menu is displayed.



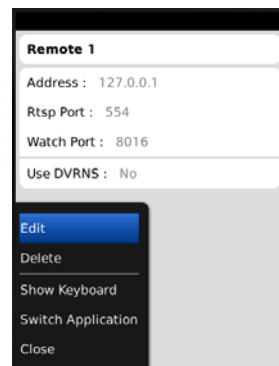
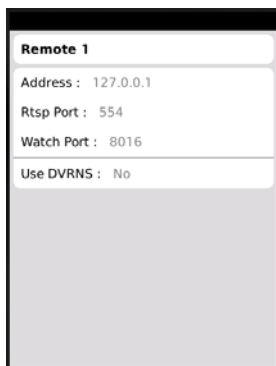
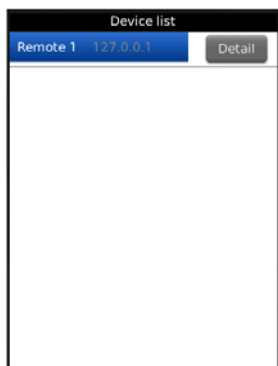
- **Add New Site, Delete Site:** Tap to register or delete devices.
- **Setting:** If the device uses the DVRNS function, set up the information about the DVRNS server. You can also enable or disable the built-in BlackBerry media player.
- **About:** Tap to check the information about the Matrix Video program.

2. Select Add New Site and enter the device information to register the device.

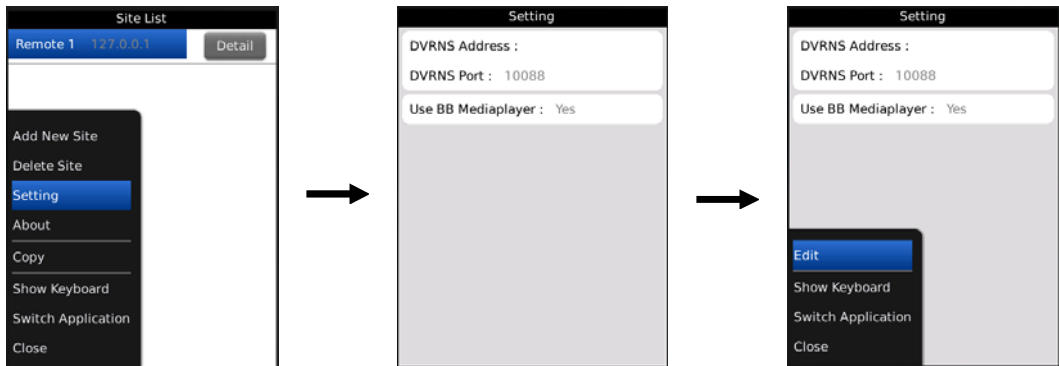


- **Name:** Enter the device name to use in the Matrix Video program.
- **Address:** Enter the IP address of the device. If the device uses the DVRNS function, check that the **Use DVRNS** option is enabled and enter the device name registered on the DVRNS server instead of the IP address. The name you enter should match the name set during the DVRNS setup on the device.
- **Rtsp Port, Watch Port:** Enter the port number of the device. Check that the RTSP function is enabled in the device.
- **Use DVRNS:** If the device uses the DVRNS function, enable the **Use DVRNS** option. You can set up the information for the DVRNS server by tapping the DVRNS in the default menu.
- **User ID, Password:** Enter the user ID and password. The user ID and password you enter should match the user ID and password used to log on to the device.

3. If you want to edit the information for the registered device, tap the **Detail** button and push the Menu button of the mobile device. Select **Edit** and edit the information.



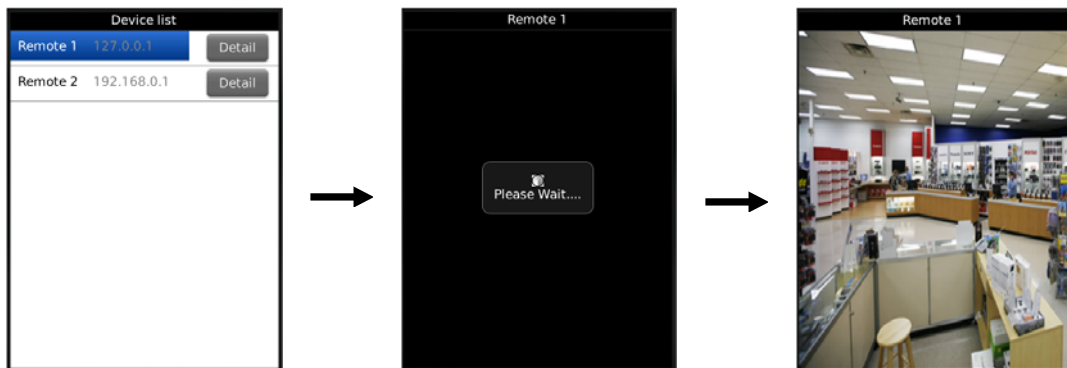
4. If the device uses the DVRNS function, select **Setting** in the default menu and set up the information for the DVRNS server.



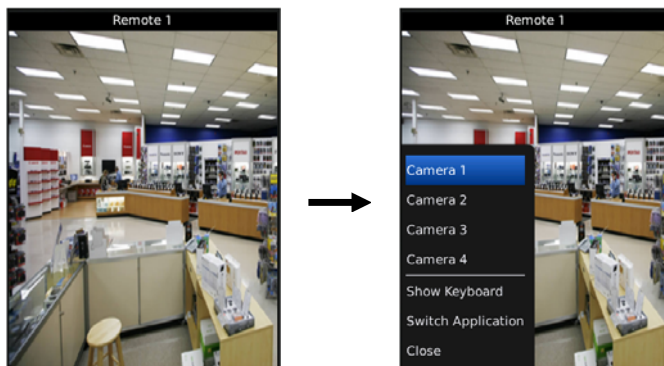
- **DVRNS Address, DVRNS Port:** Enter the IP address (or domain name) and port number of the DVRNS server. The IP address (or domain name) and port number of the DVRNS server should match them registered on the devices.
- **Use BB Mediaplayer:** Displays video from the device by using the built- in BlackBerry media player. It increases the display speed but may cause problems displaying video. If video is not displayed when using this function, disable this function.

Monitoring

1. Select a device to monitor from the device list in the default menu. Video from the device is displayed on the screen.



2. Push the Menu button of the mobile device and a camera list is displayed. Select a desired camera from the camera list and video from the camera is displayed on the screen.



3. Push the Cancel button of the mobile device to monitor video from other devices. The current connection is released and the default menu is displayed.

NOTE: If the device uses a NAT (Network Address Translation) device for network connection, it may be necessary to set up port forwarding manually on the NAT device or enable the UPnP function in both the device and NAT device. Refer to the user manual of the device for details about enabling the UPnP function.

NOTE: If video is not displayed after connecting to the device, check that the *Use Mobile* option was enabled during the RTSP setup in the device.