

SDN655PS

COLOR DAY/NIGHT BULLET CAMERA

PRECAUTIONS



- **Power Requirements**
The equipment should be operated only with the type of power source indicated on the marking label.
This camera is designed for use with a regulated 12V DC power source.

- **Impedance**

This camera is to be used with a standard 75 ohm impedance monitor. On monitors with both a high and standard impedance mode, ensure the impedance mode is set to standard.

- **Service**

Do not attempt to service the camera yourself. There are no user serviceable parts inside.
Refer servicing to a qualified service technician.

- **Light Exposure**

Do not aim or point the camera towards the sun or into a bright light.

SPECIFICATIONS

Image Device	1/3" Super HAD SONY CCD
Signal System	NTSC 60Hz
Effective Pixels	768(H) × 494(V)
Scanning System	2:1 Interlace
Sync System	Internal
Horizontal Resolution	More than 550 TV Line(Center)
Sensitivity	0 Lux(IR LED ON)
S / N Ratio	More than 45dB(AGC OFF)
Gamma Correction	$\gamma = 0.45$
Video Output	Composite 1[Vp-p], 75(Ω) unbalanced
Electronic Shutter	1/60~1/100,000 sec Auto
Power Supply	12V DC($\pm 10\%$) = MAX 5.5W
IP Rate	IP 67
Operating Temperature	14° F ~ 104° F (-10°C ~ +40°C)
Storage Temperature	-22° F ~ 122° F (-30°C ~ +50°C)
Weight	16.04 oz (455g)
Dimensions	60(mm) ϕ (2.36(inch)) × 145(mm)(5.7(inch))
IR LED	18 Unit IR LED (30M beam lengtht)
IR LED wavelength/half angle	850nm/ ± 15 degree
Varifocal Lenses	f 3.8mm ~ 9.5mm / F1.2 Aspherical

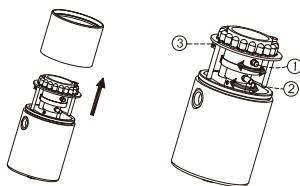
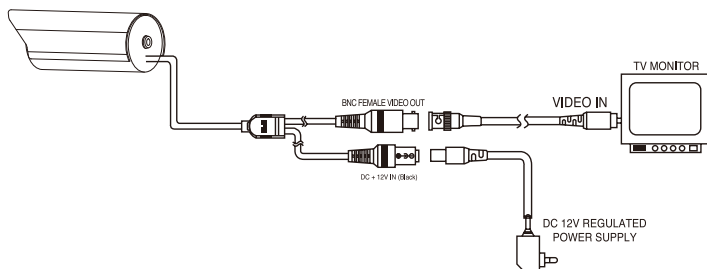
CAMERA CONNECTIONS

The SDN655PS camera can be used in video systems with BNC connections.(composite video)

The cable on the camera has a BNC connection for video output and a power connector for a 12V DC power source.

The SDN655PS camera comes with the following accessories :

- Camera mount
- Adaptor(power supply)



1. Loosen the fixture on top of camera and remove the sunshield. After that, twist the window cap to remove it.

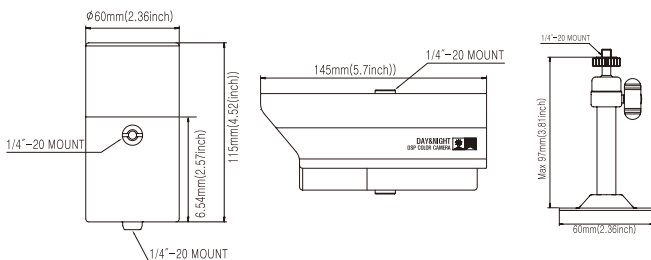
2. Loosen the Zoom lock screw by turning it counterclockwise. Adjust the Zoom by moving the Zoom lever to Tele side or Wide side. Turn the Zoom lock screw clockwise to tighten the Zoom lever after adjustment.

3. Loosen the focus lock screw by turning it counterclockwise. Adjust the focus by moving the focus lever to near side or far side. Turn the focus lock screw clockwise to tighten the focus lever after adjustment.

4. The overall brightness level of the video output can be adjusted using the video level variable resistor (VR).

The lens cover should be fully fasten down leaving no gap between camera body and lens cover to prevent the possibility of moisture entering into the camera body.

DIMENSIONS



This device complies with Part 15 of the FCC Rules. Operation is subject to the following two conditions;

1. This device may not cause harmful interference.
2. This device must accept any interference received, including interference that may cause undesired operation.

Note - This equipment has been tested and found to comply with limits for a Class B digital device, pursuant to part 15 of the FCC Rules. These limits are designed to provide reasonable protection against harmful interference in a residential installation.

This equipment generates, uses, and can radiate radio communications.

However, there is no guarantee that interference will not occur in a particular installation. If this equipment off and on, the user is encouraged to try to correct the interference by one or more of the following measures :

- Reorient or relocate the receiving antenna
- Increase the separation between the equipment and receiver.
- Connect the equipment into an outlet on a circuit different from that to which the receiver is connected.
- Consult the dealer or an experienced radio / tv technician for help.

Caution - Any changes or modifications in construction of this device which are not expressly approved by the party responsible for compliance could void the user's authority to operate the equipment.