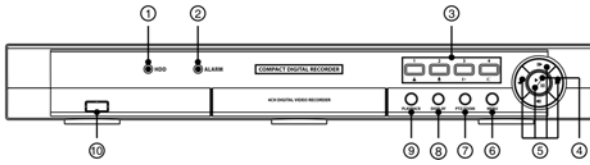


A-ADT4HS QUICK REFERENCE GUIDE

FEATURES AND FUNCTIONS (1)

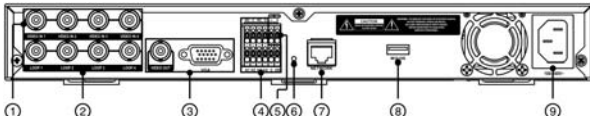
FRONT PANEL



- ① HDD LED ② Alarm LED ③ Camera Buttons ④ Play/Pause Button
- ⑤ Arrow Buttons ⑥ Menu Button ⑦ PTZ/Zoom Button ⑧ Display Button
- ⑨ Playback Button ⑩ USB Connector

*Select camera buttons (1-4) to view individual cameras full screens.

REAR PANEL



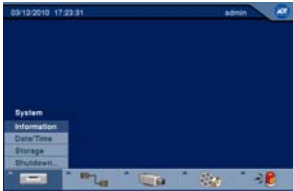
- ① Video Input ② Video Loop Through ③ Video Out
- ④ Alarm Input/Output ⑤ RS485 Port ⑥ Factory Reset Switch
- ⑦ Network Port ⑧ Mouse Port ⑨ Power Cord Connector

SYSTEM SETUP

1. After connecting the power cord, the unit will be operational in 60 seconds.

***NOTE: There is no record button on the unit. Please refer to the Configuring Record Settings section for the proper record settings.**

2. Press the "MENU" button or move the mouse pointer to the top of the screen and then select (Setup) in the Live Monitoring menu, enter the password then press the button. There is no default password when logging in the admin user for the first time. To assure the secure management of the system, setting up a password is strongly recommended.

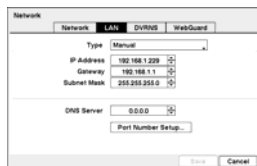


3. Go to <System> <Information> to name the site location, assign a System ID number, select the language the screens are displayed in, display software version number, upgrade the software, show the System Log, change a password, show Event Status, display recorded time data, and clear all data.
4. Go to <System> <Date/Time> to enter a new date and time.

***NOTE: Before powering down the DVR (or logging out the current user) highlight System Shutdown, press the button (or pressing the "MENU" button) and confirm whether or not you want to shut the system down (or logging out the current user).**

NETWORK SETUP

1. Go to <Network> <Network> to set the transfer speed and remote quality and to select the audio channel that sends audio to the remote site.
2. Go to <Network> <LAN> to select the type of network configuration first then set up LAN parameters for the selected network configuration.



CONFIGURING INPUT DEVICES



1. Go to <Devices> <Camera> to turn On or Off each camera and assign camera titles.
2. Go to <Devices> <Alarm-Out> to assign alarm output title and set the dwell time of the alarm output.
3. Go to <Devices> <Display> to select what information will be displayed on the monitor and set up the main monitor.

CONFIGURING RECORD SETTINGS

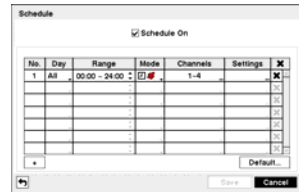


1. Go to <Record> <Record> to configure recording settings.
2. Highlight the Recycle box and press the button to select the HDD usage mode. In the Recycle mode, the DVR records over the oldest video data once all available storage space has been used.
3. Highlight the box beside Resolution and press the button to select the recording resolution from Standard, High and Very High.
4. Highlight the box beside Auto Deletion and press the button to adjust the length of time recorded data will be kept.
5. Highlight the slide bar beside Limit Time-Lapse Recording, and use the Left and Right arrow buttons on the front panel to adjust the length of the maximum storage time for time-lapse recording.

Recording Schedule

1. Go to the <Record> <Schedule> to set up the recording schedule.
2. Highlight the + and press the button to add a schedule item, and highlight the box under the X heading and press the button to delete the recording settings.
3. You can change the days and time range that the scheduled recording will take place, change the recording mode (No Record, Time, Event or Time & Event mode), and select which camera will be recorded.

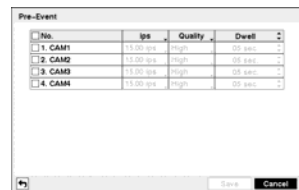
***NOTE: Refer to the User's Manual for each schedule mode for details.**



Pre-Event Recording

1. Go to <Record> <Pre-Event> to set up pre-event recording.
2. You can turn individual cameras On or Off for pre-event recording and set the image speed, image quality and the amount of time to record prior to the event (dwell).

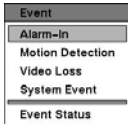
***NOTE: When the DVR is in the Time or Time & Event mode, it ignores the pre-event settings and follows the time settings.**



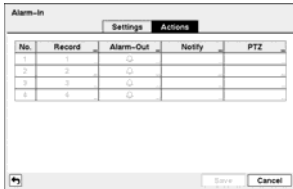
A-ADT4HS QUICK REFERENCE GUIDE

FEATURES AND FUNCTIONS (2)

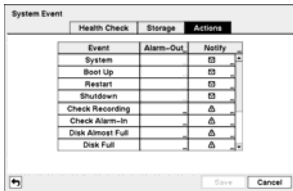
EVENT ACTION SETTINGS



1. Highlight the Alarm-In, Motion Detection and Video Loss in the Event menu and press the button. The Event Setting and Actions setup screens will appear.
2. In each Event Actions screen, you can set the actions (Record, Alarm-Out, Notify and PTZ) the DVR will take whenever it senses alarm input, detects motion and loses video.

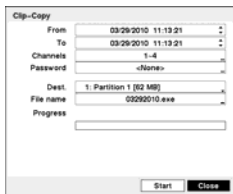


3. Highlight the System Event in the Event menu and press the button. The System Event setup screen will appear.
4. In the System Event Actions screen, you can set the actions (Alarm-Out and Notify) the DVR will take when it detects system events.



CLIP-COPY

The Clip-Copy screen can be used to copy video to external USB flash drive. The clip copy can be done by selecting Clip-Copy from the Export menu in the Search menu while in the Search mode, or selecting Clip-Copy or A-B Clip-Copy from the Export menu in the Search menu during playback.



***NOTE:** The Clip Copy feature requires the camera title or number along with the date and time of the recorded images to be copied. To view the copied images, remove the USB flash drive from the DVR and insert it into your PC. Select the image file name, and the executable Clip Player software program will open automatically displaying playback controls for viewing the video clip.

SEARCH AND PLAYBACK

1. Press the "PLAYBACK" button on the front panel or select (Search Mode) in the Live Monitoring menu to enter the Playback mode.
2. Press the "MENU" button while in the Search mode or move the mouse pointer to the top of the screen to display the Search Menu. Select the type of search using the arrow buttons and press the button.



- ① Search
- ② Go To
- ③ Export
- ④ Camera Menu
- ⑤ Alarm Reset
- ⑥ Data Source
- ⑦ Exit

Event Search

1. Select <Event Log Search> or <Calendar Search> in the Search Menu.
2. The event log list will be shown on the screen. Highlight the event you would like to see and press the button.

For more specific search conditions, select <Option> and enter search parameters then select <Search>. The search results will be displayed in each screen.

3. Pressing the button will start playing the "event" video segment. Press the "PLAYBACK" button to return to live monitoring.



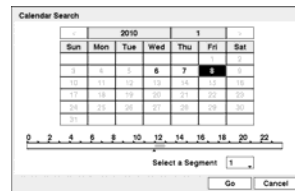
4. Calendar Search: Days with recorded video display on the calendar with white numbers. Once you have highlighted a day, press the button to select it.

***NOTE:** It is possible that no recorded image displays on the current screen. Press the "DISPLAY" button and change the screen mode to 4x4. You will be able to easily see the camera have recorded video during target time.

Calendar Search

1. Select <Event Log Search> or <Calendar Search> in the Search Menu.
2. Days with recorded video display on the calendar with white numbers. Once you have highlighted a day, press the button to select it.
3. A time bar displays at the bottom of the calendar. Hours in which video was recorded will be highlighted with blue. Once the time bar is highlighted, you can select the time by using the Left and Right arrow buttons.
4. If the DVR's time and date have been reset to a time that is earlier than some recorded video, it is possible for the DVR to have more than one video stream in the same time range. Move to Select a Segment, and select the video stream you want to search.

***NOTE:** If the DVR's time and date have been reset to a time that is earlier than some recorded video, it is possible for the DVR to have more than one video stream in the same time range. Move to "Select a Segment", and select the video stream you want to search.



Go To Search

1. Select <Go To> in the Search Menu.
2. Selecting <Go to the First> displays the first recorded image, selecting <Go to the Last> displays the last recorded image, and selecting <Go to the Date/Time> displays the Go to the Date/Time screen.



3. Enter a specific date and time and select "OK" by pressing the button. The button and arrow buttons to review the video.